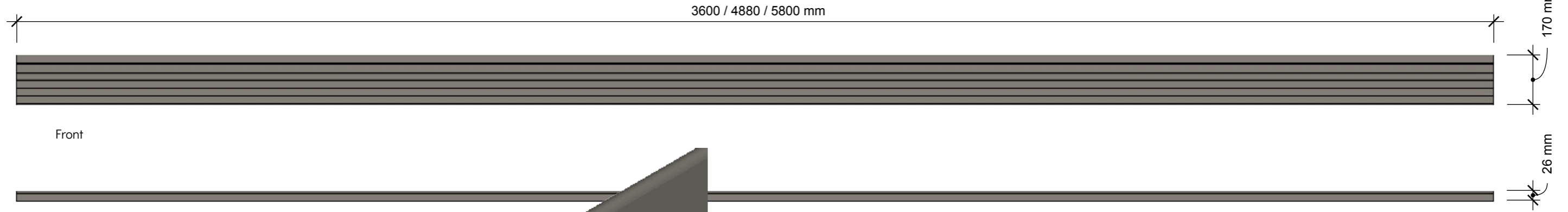
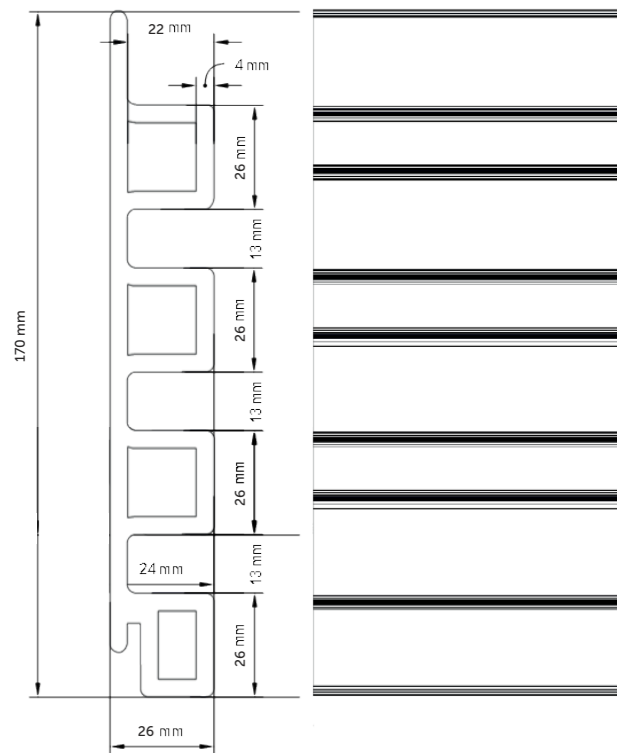


Do not scale from this drawing.
 The Contractor shall be responsible for checking dimensions, tolerances & references.
 Discrepancies to be verified with Ecoscpae UK before commencement of works.



Front

Side
 Scale 1:10



Section
 Scale 1:1



Iso
 Scale 1:1

Pavezzi Ressisto Castellated Cladding Board

Material: Wood Plastic Composite

Finish: Brushed Finish

Slatted with 26mm Batten

Product Variants:



Length	TEAK	ELM	PURE WHITE	CHARCOAL
5800mm	CAS 002 / 5800	CAS 004 / 5800	CAS 005 / 5800	CAS 006 / 5800
4880mm	CAS 002 / 4880	CAS 004 / 4880	CAS 005 / 4880	CAS 006 / 4880
3600mm	CAS 002 / 3600	CAS 004 / 3600	CAS 005 / 3600	CAS 006 / 3600



Length	EBONY	AMERICAN OAK	NORDIC WHITE	BARNWOOD
5800mm	CAS 007 / 5800	CAS 008 / 5800	CAS 009 / 5800	CAS 010 / 5800
4880mm	CAS 007 / 4880	CAS 008 / 4880	CAS 009 / 4880	CAS 010 / 4880
3600mm	CAS 007 / 3600	CAS 008 / 3600	CAS 009 / 3600	CAS 010 / 3600

© 2021 Pavezzi



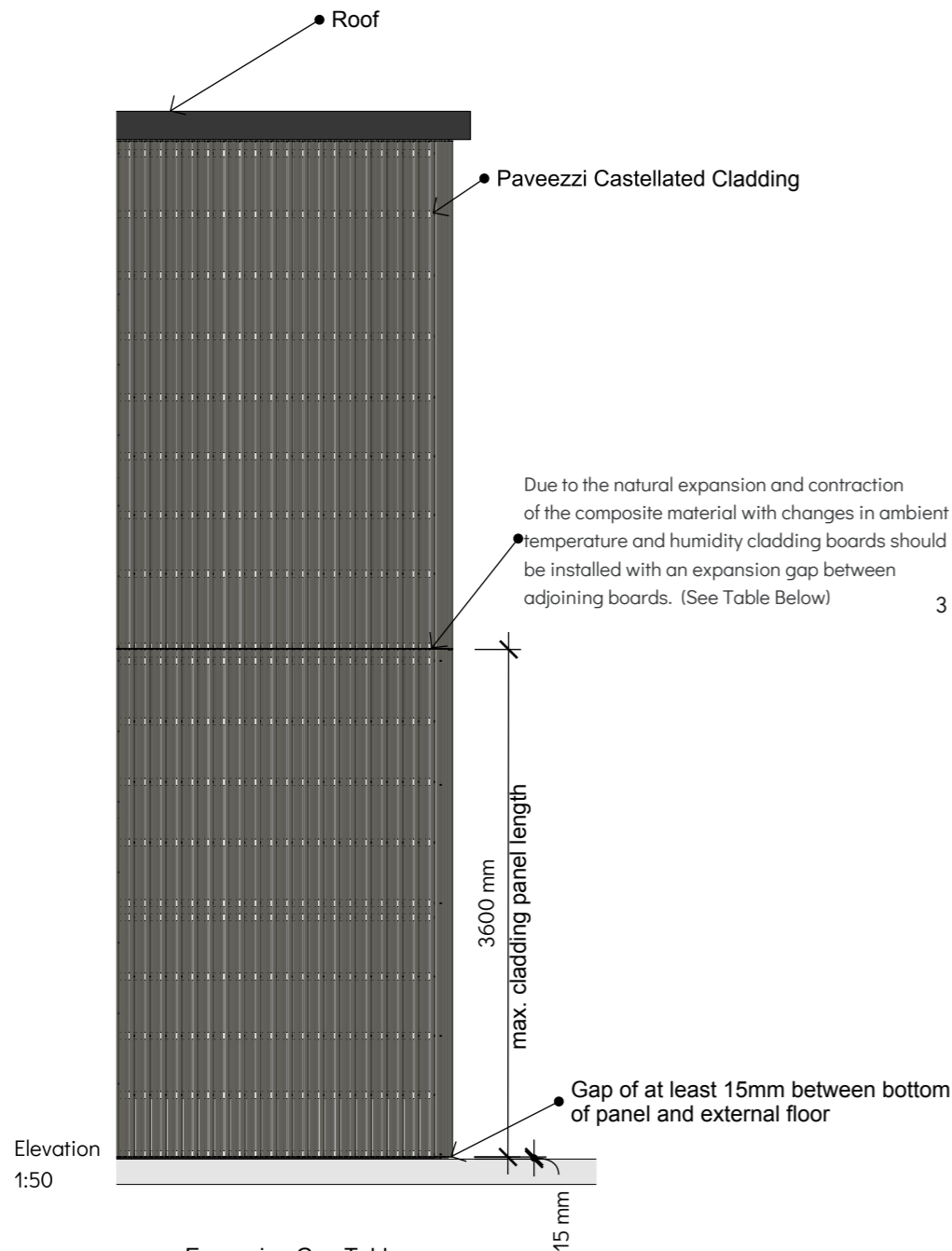
Pavezzi Composites
 142-150 Cooper St, Epping, Melbourne VIC 3076
www.pavezzicomposites.com.au
 +61 449 731 550 | info@pavezzicomposites.com.au

Division
Cladding
 Range
Castellated
 Item
Board

Description
Castellated Cladding Board Product Detail
 Title
3.6m Castellated Cladding Board
 Scale
As shown @ A3

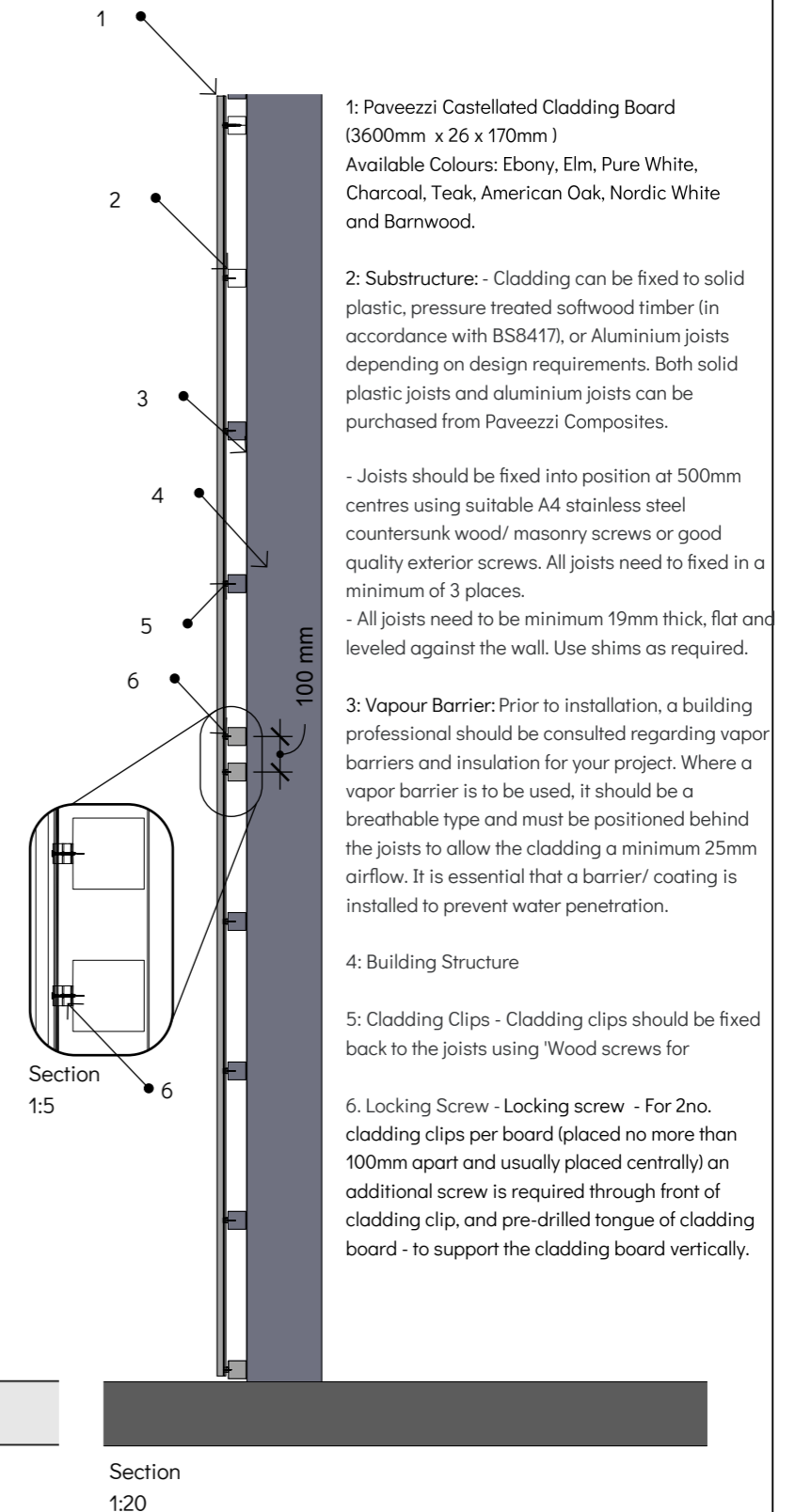
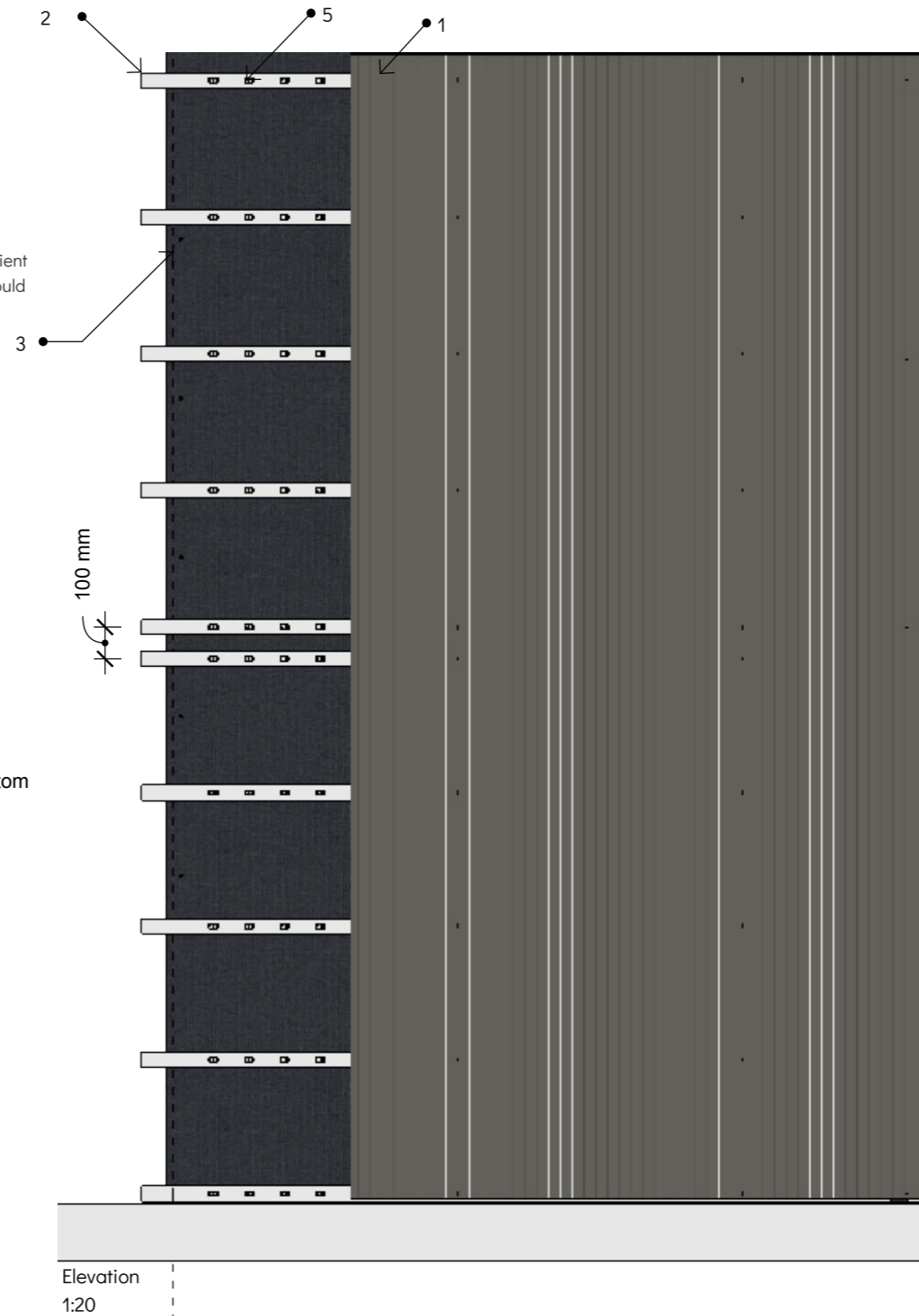
Issued
20/02/24

Castellated Cladding Vertical Orientation Typical Detail



Expansion Gap Table

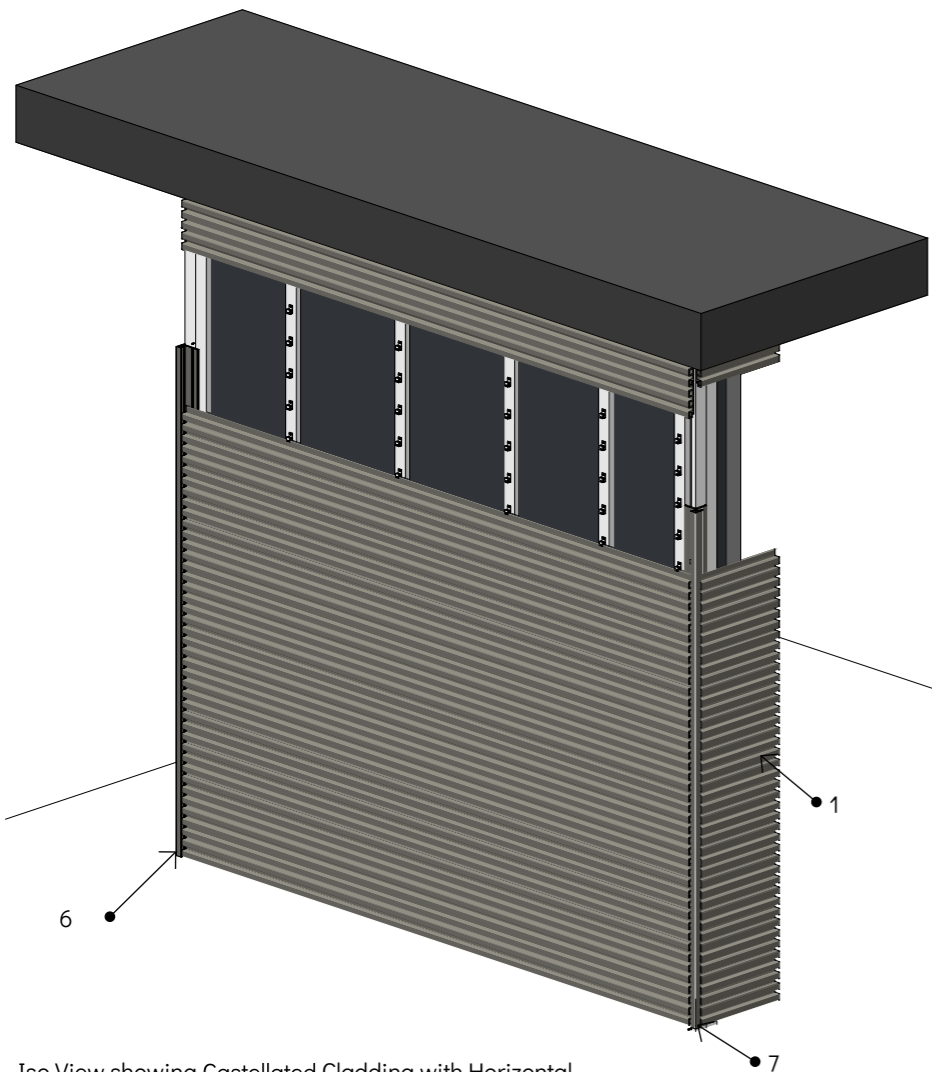
		Length (Meters)										
		1	2.44	2.8	3	3.66	3.9	4	4.88	5.4		
Installation Temperature (°C)	-10	2.4	5.9	6.7	7.2	8.8	9.4	9.6	11.7	13.0	Gap (mm)	
	-5	2.2	5.4	6.2	6.6	8.1	8.6	8.8	10.7	11.9		
	0	2.0	4.9	5.6	6.0	7.3	7.8	8.0	9.8	10.8		
	5	1.8	4.4	5.0	5.4	6.6	7.0	7.2	8.8	9.7		
	10	1.6	3.9	4.5	4.8	5.9	6.2	6.4	7.8	8.6		
	15	1.4	3.4	3.9	4.2	5.1	5.5	5.6	6.8	7.6		
	20	1.2	2.9	3.4	3.6	4.4	4.7	4.8	5.9	6.5		
	25	1.0	2.4	2.8	3.0	3.7	3.9	4.0	4.9	5.4		
	30	0.8	2.0	2.2	2.4	2.9	3.1	3.2	3.9	4.3		
35	0.6	1.5	1.7	1.8	2.2	2.3	2.4	2.9	3.2			
40	0.4	1.0	1.1	1.2	1.5	1.6	1.6	2.0	2.2			



- 1: Pavezzi Castellated Cladding Board (3600mm x 26 x 170mm)
Available Colours: Ebony, Elm, Pure White, Charcoal, Teak, American Oak, Nordic White and Barnwood.
- 2: Substructure: - Cladding can be fixed to solid plastic, pressure treated softwood timber (in accordance with BS8417), or Aluminium joists depending on design requirements. Both solid plastic joists and aluminium joists can be purchased from Pavezzi Composites.

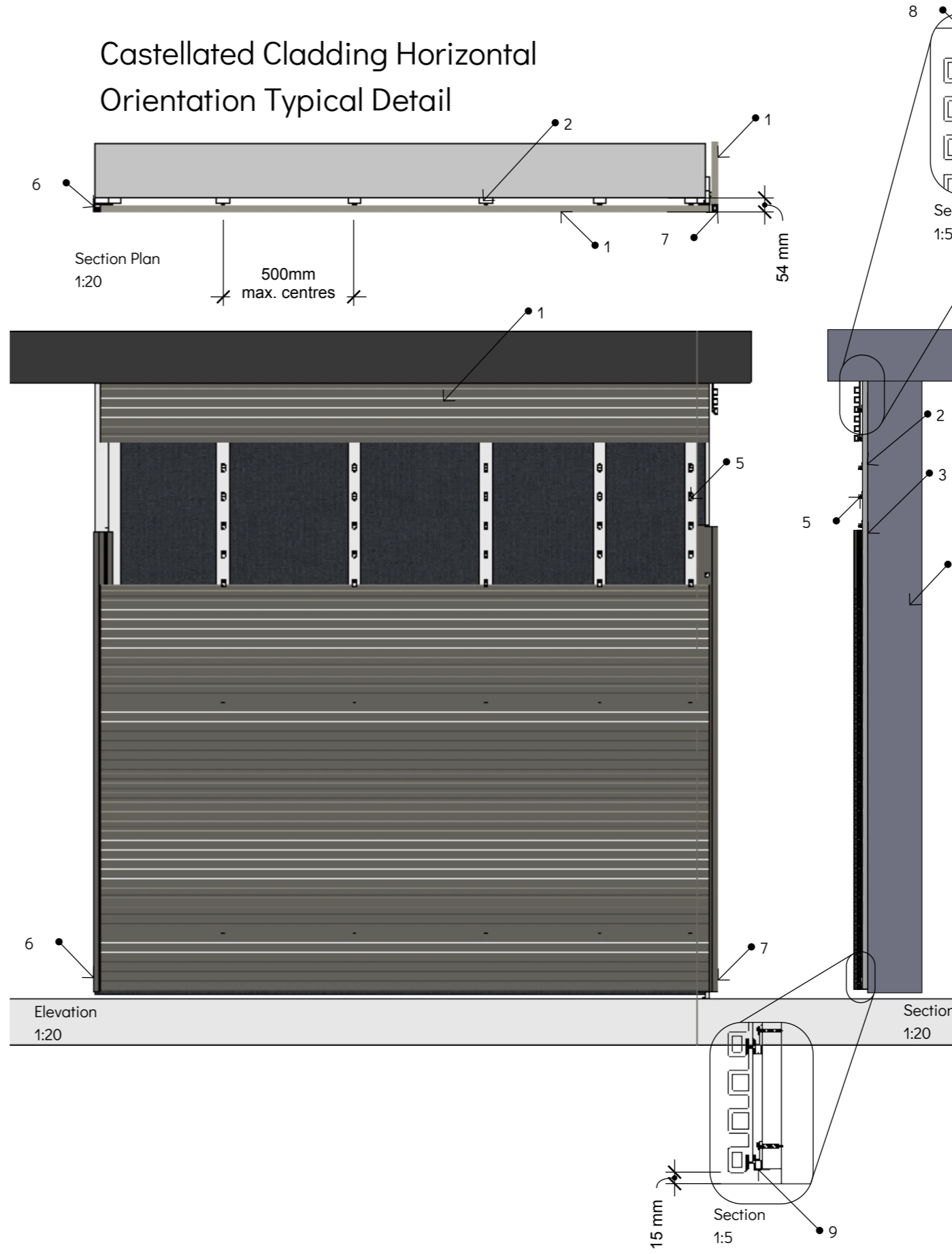
- Joists should be fixed into position at 500mm centres using suitable A4 stainless steel countersunk wood/ masonry screws or good quality exterior screws. All joists need to be fixed in a minimum of 3 places.
- All joists need to be minimum 19mm thick, flat and leveled against the wall. Use shims as required.
- 3: Vapour Barrier: Prior to installation, a building professional should be consulted regarding vapor barriers and insulation for your project. Where a vapor barrier is to be used, it should be a breathable type and must be positioned behind the joists to allow the cladding a minimum 25mm airflow. It is essential that a barrier/ coating is installed to prevent water penetration.
- 4: Building Structure
- 5: Cladding Clips - Cladding clips should be fixed back to the joists using 'Wood screws for
- 6: Locking Screw - Locking screw - For 2no. cladding clips per board (placed no more than 100mm apart and usually placed centrally) an additional screw is required through front of cladding clip, and pre-drilled tongue of cladding board - to support the cladding board vertically.

Castellated Cladding Horizontal Orientation Typical Detail



Iso View showing Castellated Cladding with Horizontal cladding (some boards removed to show substructure below)
1:50

		Length (Meters)										
		1	2.44	2.8	3	3.66	3.9	4	4.88	5.4		
Installation Temperature (°C)	-10	2.4	5.9	6.7	7.2	8.8	9.4	9.6	11.7	13.0	Gap (mm)	
	-5	2.2	5.4	6.2	6.6	8.1	8.6	8.8	10.7	11.9		
	0	2.0	4.9	5.6	6.0	7.3	7.8	8.0	9.8	10.8		
	5	1.8	4.4	5.0	5.4	6.6	7.0	7.2	8.8	9.7		
	10	1.6	3.9	4.5	4.8	5.9	6.2	6.4	7.8	8.6		
	15	1.4	3.4	3.9	4.2	5.1	5.5	5.6	6.8	7.6		
	20	1.2	2.9	3.4	3.6	4.4	4.7	4.8	5.9	6.5		
	25	1.0	2.4	2.8	3.0	3.7	3.9	4.0	4.9	5.4		
	30	0.8	2.0	2.2	2.4	2.9	3.1	3.2	3.9	4.3		
	35	0.6	1.5	1.7	1.8	2.2	2.3	2.4	2.9	3.2		
40	0.4	1.0	1.1	1.2	1.5	1.6	1.6	2.0	2.2			



- 1: Pavezzi Castellated Cladding Board (3600mm x 26 x 170mm)
Available Colours: Ebony, Elm, Pure White, Charcoal, Teak, American Oak, Nordic White and Barnwood.
- 2: Substructure: - Cladding can be fixed to solid plastic joists, or pressure treated softwood timber*, or Aluminium joists depending on design requirements.
- Joists should be fixed into position at 500mm centres using suitable A4 stainless steel countersunk wood/ masonry screws or good quality exterior screws. All joists need to be fixed in a minimum of 3 places.
- All joists need to be minimum 19mm thick, flat and leveled against the wall. Use shims as required.
- 3: Vapour Barrier: Prior to installation, a building professional should be consulted regarding vapor barriers and insulation for your project. Where a vapor barrier is to be used, it should be a breathable type and must be positioned behind the joists to allow the cladding a minimum 25mm airflow. It is essential that a barrier/ coating is installed to prevent water penetration.
- 4: Building Structure
- 5: Cladding Clips - The centre of each cladding board should be supported by double joists - spaced at 50mm apart - which should be fixed with 2no. colour-coded screws -fixed through the recess into pre-drilled and countersunk holes.
- 6: End Trim - to be fixed back to joist with good quality exterior screw. Cladding to be fixed to trim using Colour-coded screws (into recess), ensuring cladding is pre-drilled and countersunk.
- 7: Corner Trim - to be fixed back to joist with good quality exterior screw. Cladding to be fixed to trim using Ecoscape Colour-coded screws (into recess), ensuring cladding is pre-drilled and countersunk.
- 8: Plastic Pad - Where end trims are not used, the uppermost cladding board may be secured using a plastic pad and colour coded screw (pre-drilled and countersunk) through each joist)
- 9: Starter Bar - when cladding is installed in horizontal orientation - starter bar should be used in place of cladding clips for mounting the lowermost cladding board, ensuring a gap of 15mm between bottom of cladding and the floor, to avoid excessive moisture absorption.



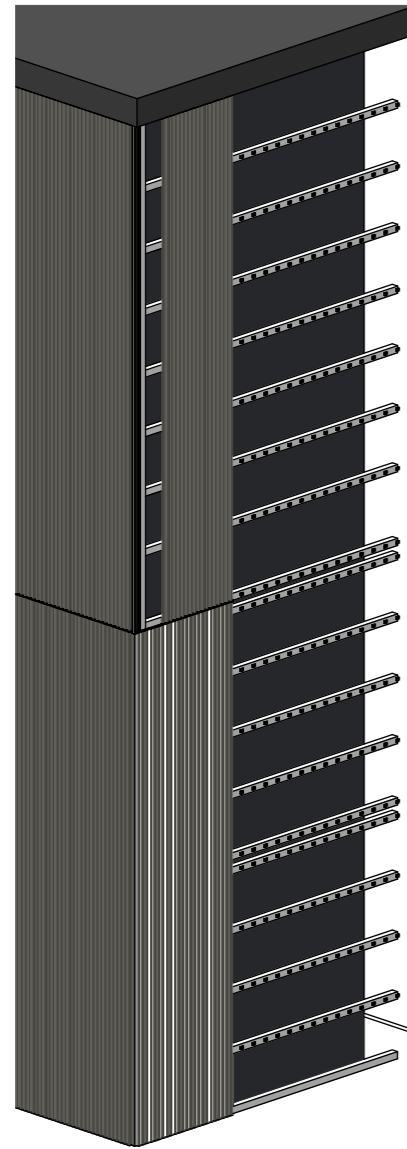
Pavezzi Composites
142-150 Cooper St, Epping, Melbourne VIC 3076
www.pavezzicomposites.com.au
+61 449 731 550 | info@pavezzicomposites.com.au

Division
Cladding
Range
Castellated
Item
Board

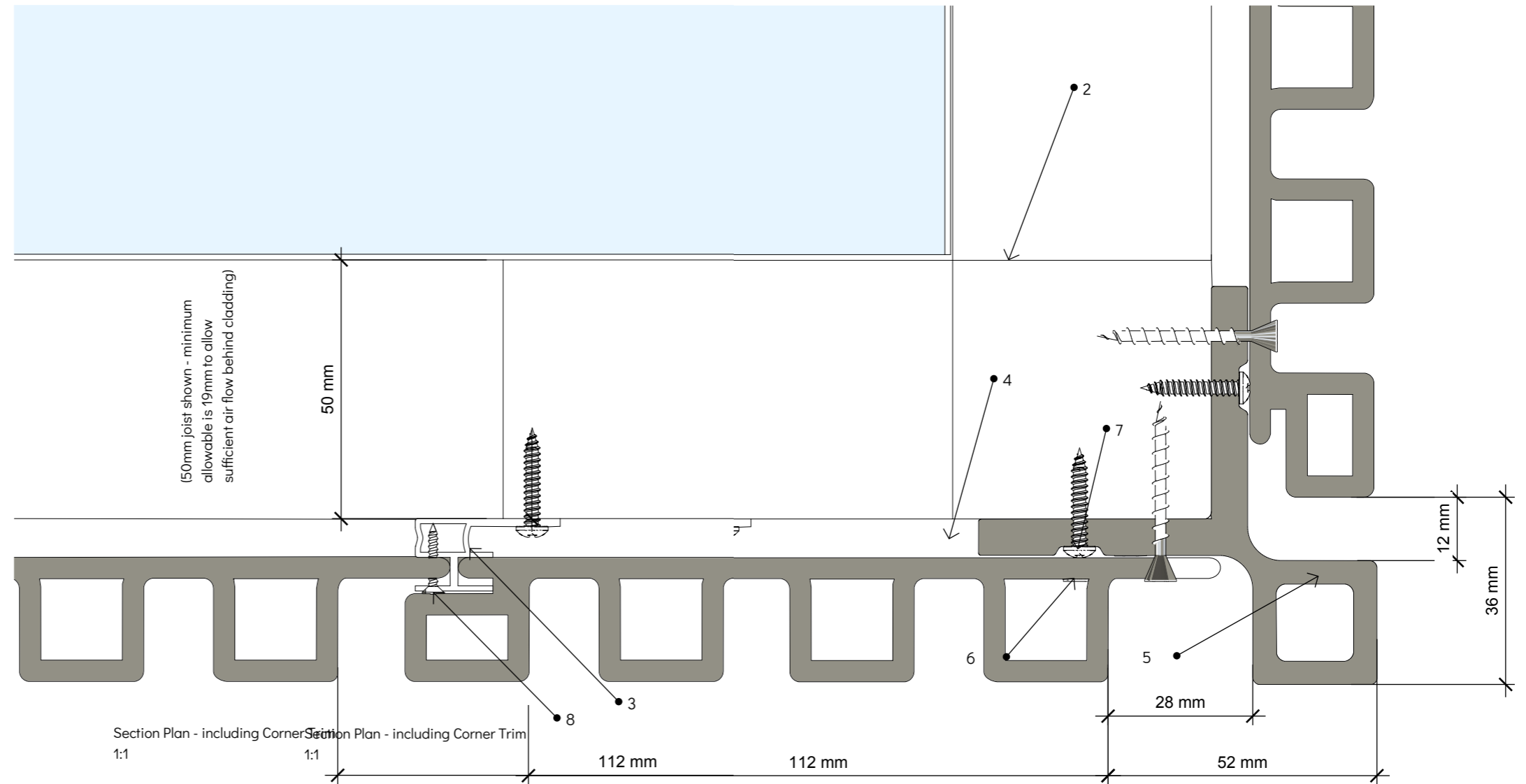
Description
Castellated Cladding Board Product Detail
Title
3.6m Castellated Cladding Board
Scale
As shown @ A3

Issued
20/02/24

Castellated Cladding Corner Trim Typical Fixing Detail

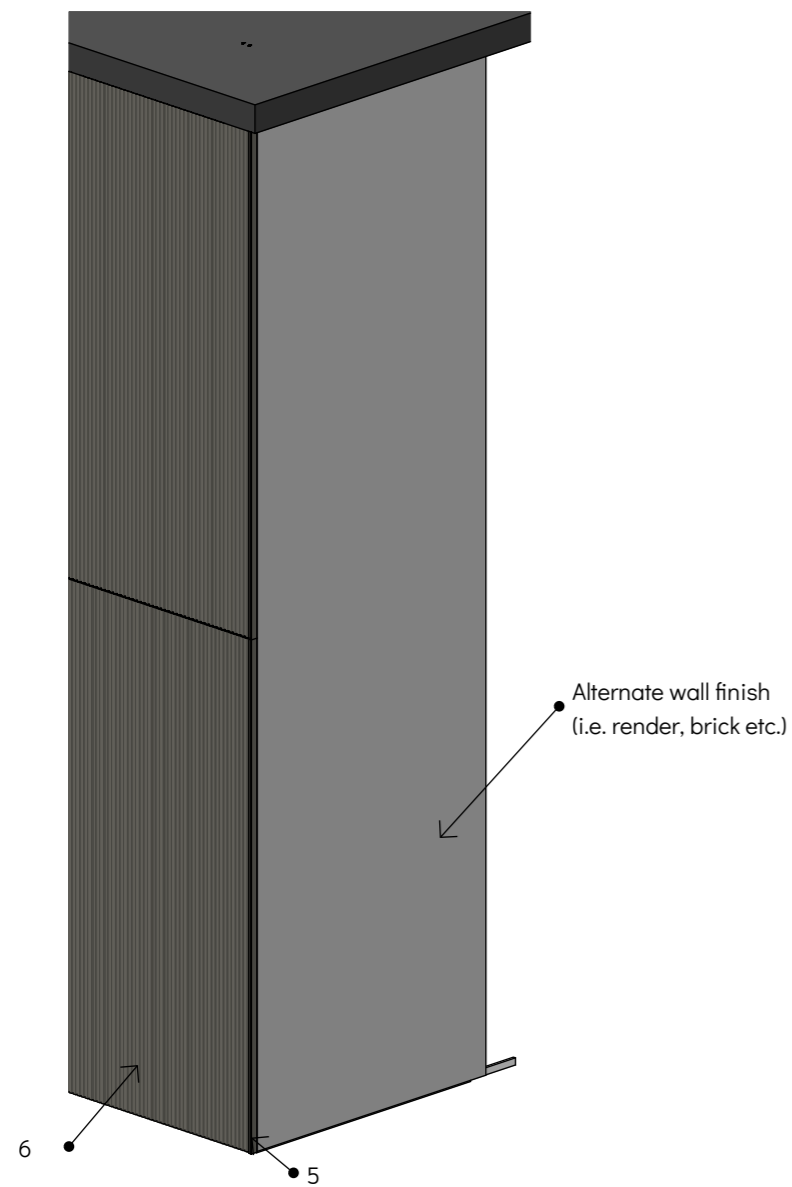


Iso: Cladding Corner Detail - shown with some cladding boards removed to show joist substructure below
1:50

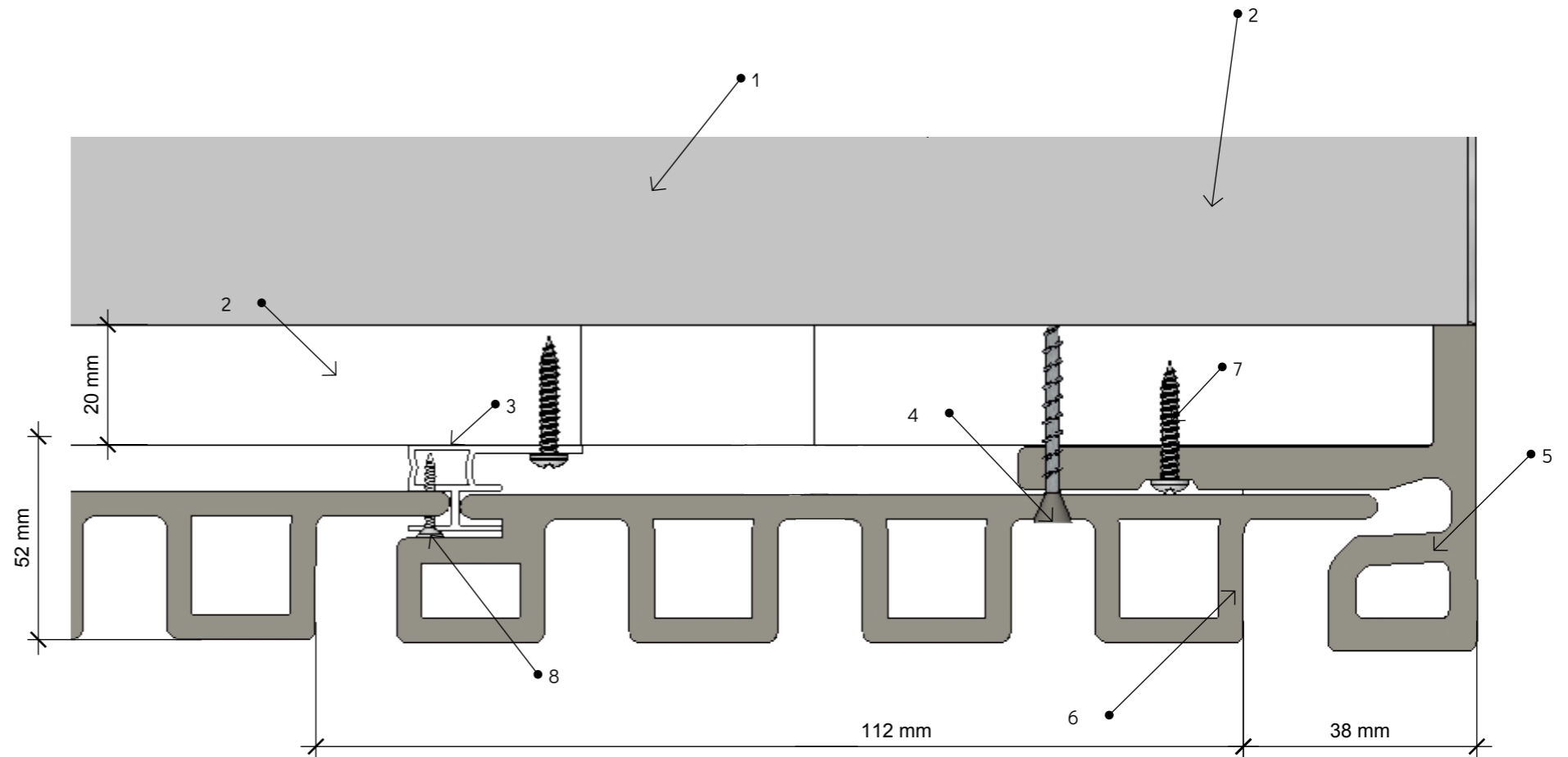


- 1: Building Wall Structure
- 2: Joists - Double joist detail required at wall corners - to allow cladding board. 50 x 50mm timber joist shown (N.B. Where using timber joists, it is recommended that the joists are protected using Tape decking and cladding substructure protection tape), applied to any adjacent surface directly adjacent to masonry, and to front and top face of timber cladding substructure)
- 3: Cladding Clips - 1 per joist - fixed to joist using 'Wood Screws for Cladding'
- 4: Colour-coded screw - to recess of the adjacent first cladding board. (Ensure all holes are pre-drilled and countersunk)
- 5: Paveezzi Castellated Cladding Corner Trim
- 6: Paveezzi Castellated Cladding Board
- 7: Colour-coded screw - To fix corner trim - applied into recess - at no more than 1000mm centres vertically. (Ensure all holes are pre-drilled and countersunk)
- 8: Locking screw - For 2no. adjacent cladding clips per board (placed no more than 100mm apart and usually placed centrally) an additional screw is required through front of cladding clip, and pre-drilled tongue of cladding board - to support the cladding board vertically.

Castellated Cladding End Trim Typical Fixing Detail



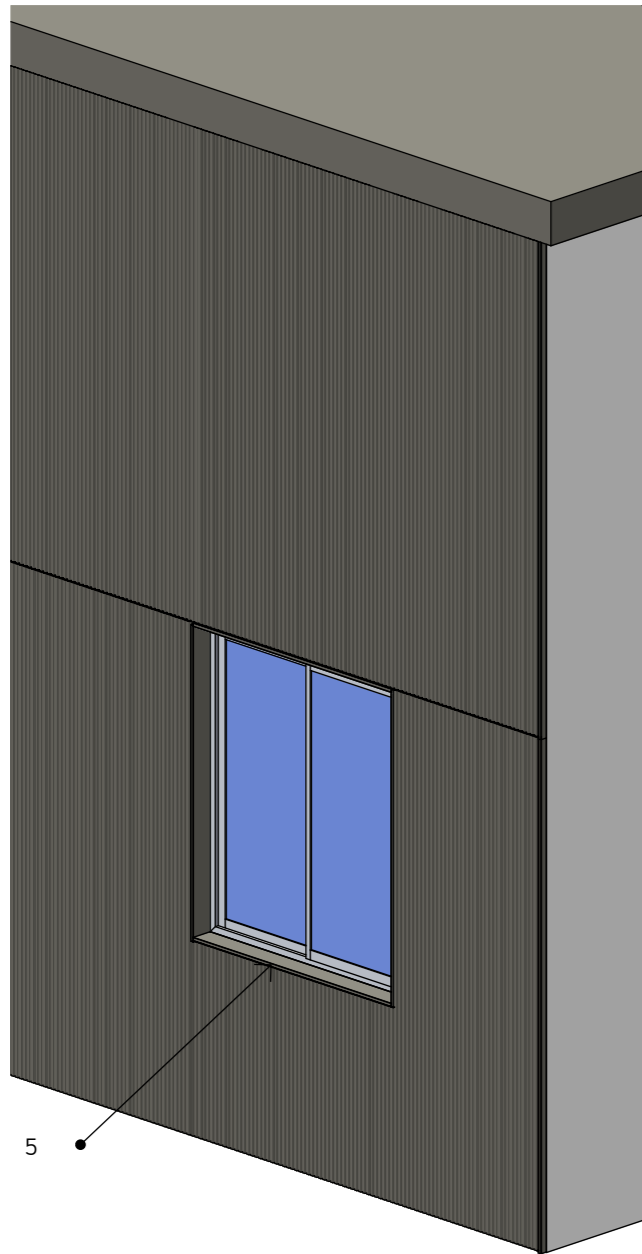
Iso: Cladding Corner Detail - showing interface of vertical slatted cladding with a render or brick wall finish
1:50



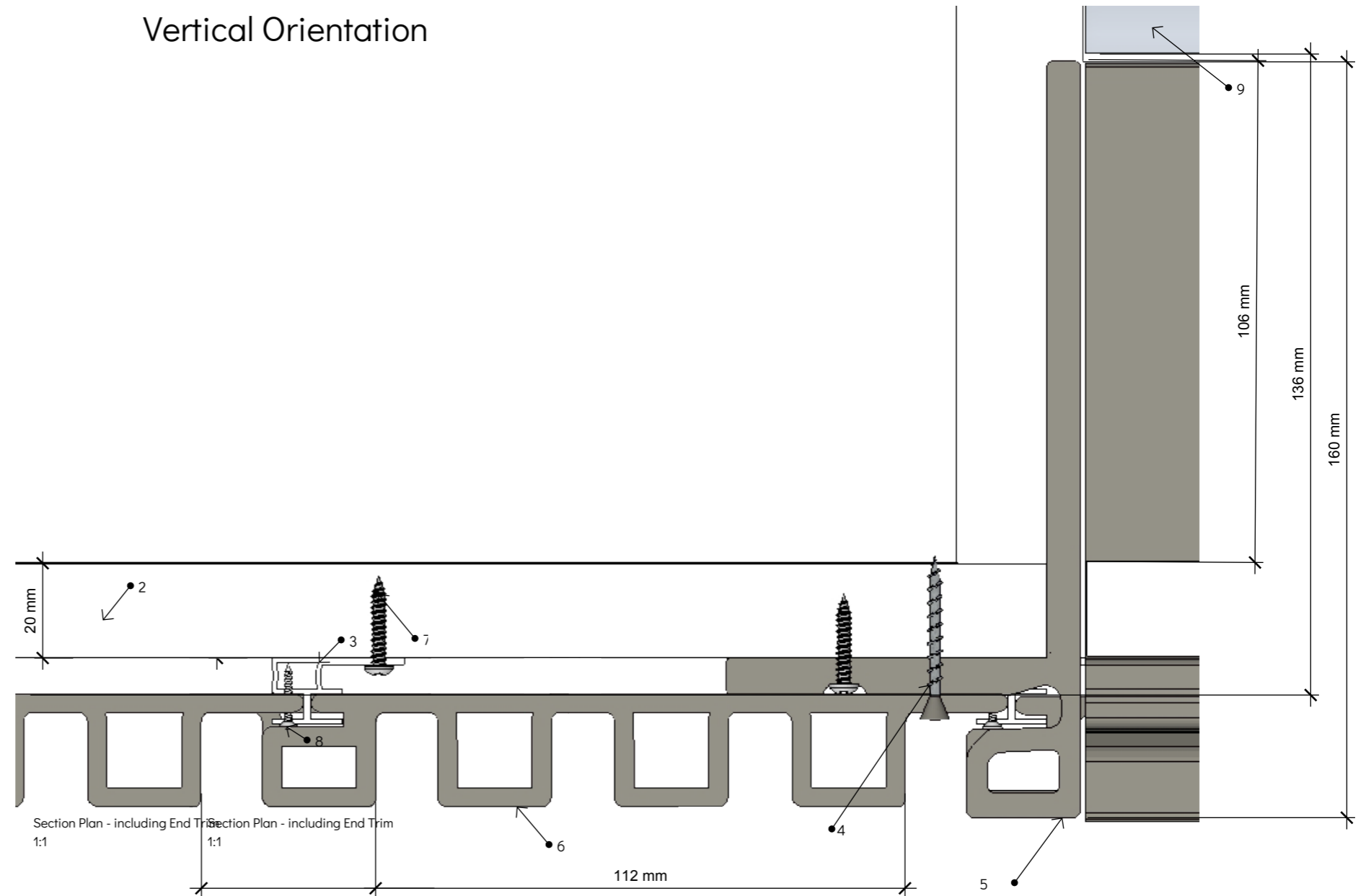
Section Plan - including End Trim
1:1

- 1: Building Wall Structure
- 2: Joists - shown is Paveezzi Composites aluminium joist 40 x 25 x 3600mm
- 3: Cladding Clips - 1 per joist - fixed to joist using 'Screws for Cladding'
- 4: Colour-coded screw - to recess of the adjacent first cladding board. (Ensure all holes are pre-drilled and countersunk)
- 5: Paveezzi Castellated Cladding End Trim
- 6: Paveezzi Castellated Panel Cladding Board
- 7: 'Wood screw for Cladding' - To fix trim - applied into recess - at no more than 1000mm centres vertically. (Ensure all holes are pre-drilled and countersunk)
- 8: Locking screw - For 2no. cladding clips per board (placed no more than 100mm apart and usually placed centrally) an additional screw is required through front of cladding clip, and pre-drilled tongue of cladding board - to support the cladding board vertically.

Castellated Cladding Reveal Trim Typical Window Fixing Detail - Vertical Orientation

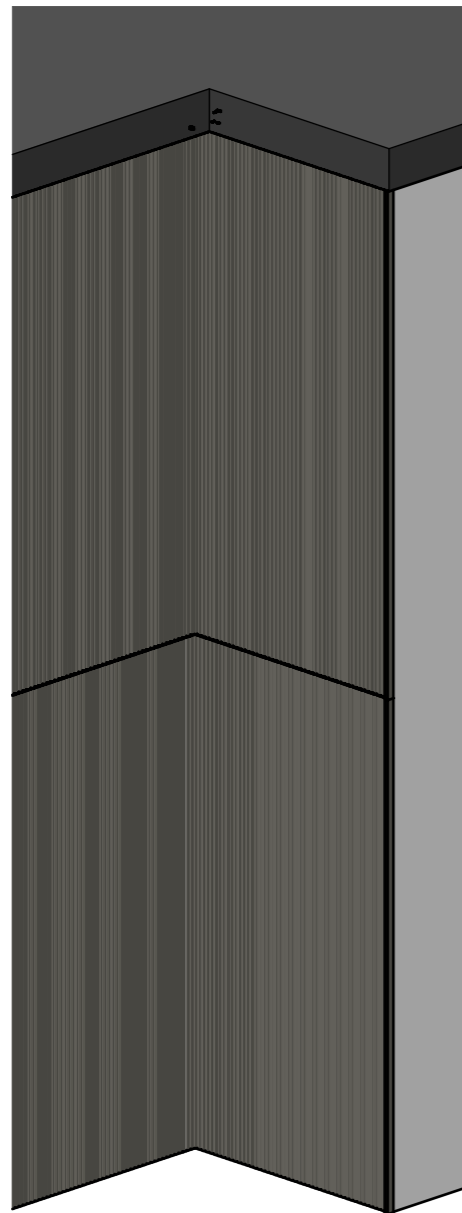


Iso: Cladding Corner Detail - showing interface of vertical slatted cladding with a window reveal
1:50



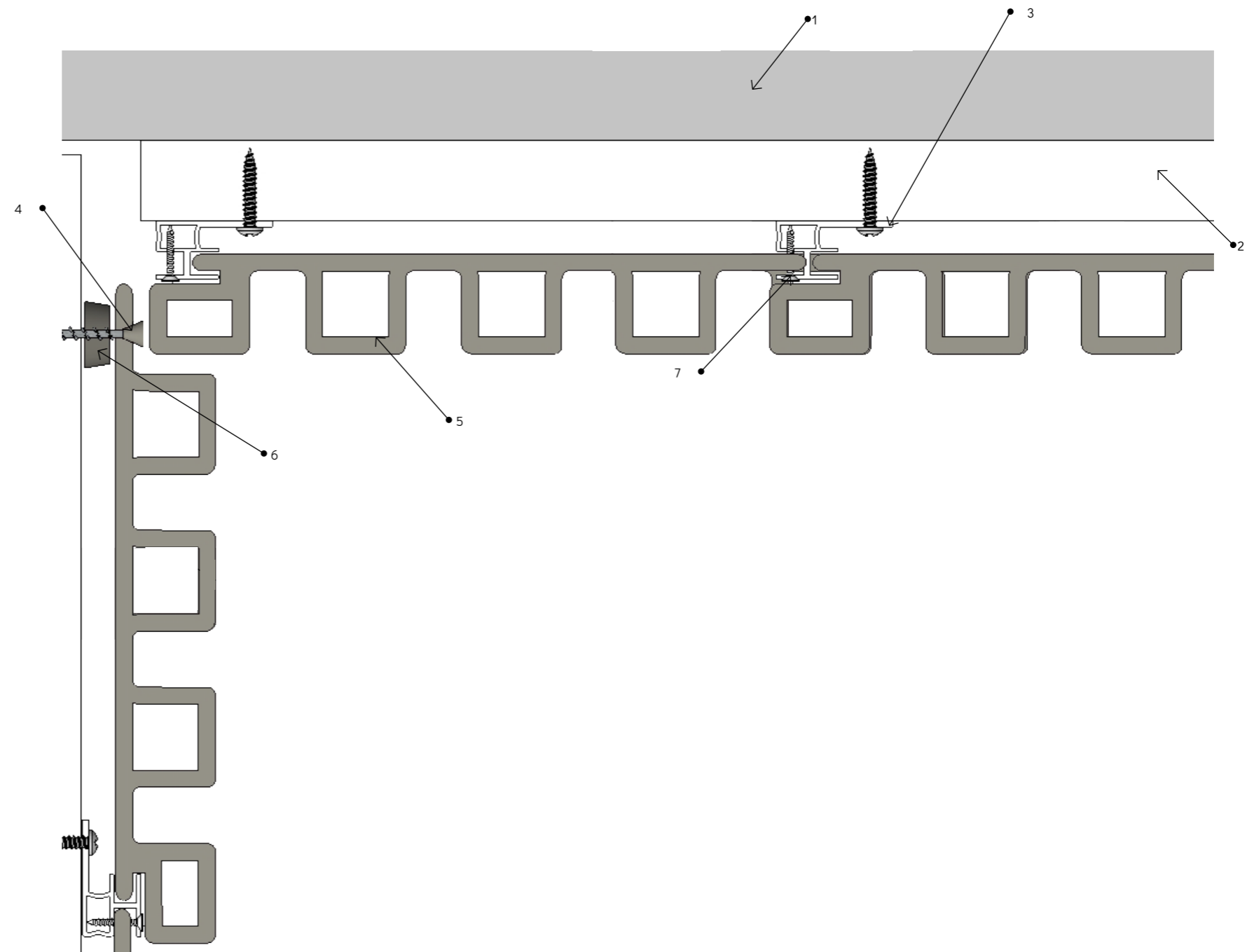
- 1: Building Wall Structure
- 2: Joists - shown is Paveezzi Composites aluminium joist 40 x 25 x 3600mm
- 3: Cladding Clips - 1 per joist - fixed to joist using 'Screws for Cladding'
- 4: Colour-coded screw - to recess of the adjacent first cladding board. (Ensure all holes are pre-drilled and countersunk)
- 5: Paveezzi Castellated Cladding Reveal Trim (Please Note: This can be ripped down to suit your window reveal)
- 6: Paveezzi Castellated Panel Cladding Board
- 7: 'Wood screw for Cladding' - To fix trim - applied into recess - at no more than 1000mm centres vertically. (Ensure all holes are pre-drilled and countersunk)
- 8: Locking screw - For 2no. cladding clips per board (placed no more than 100mm apart and usually placed centrally) an additional screw is required through front of cladding clip, and pre-drilled tongue of cladding board - to support the cladding board vertically.
- 9: Window Frame

Castellated Cladding Internal Corner Typical Fixing Detail



Iso: Cladding Corner Detail - showing internal corner and interface of vertical slatted cladding with a render or brick wall finish

1:50



- 1: Building Wall Structure
- 2: Joists - shown is Paveezzi Composites aluminium joist 40 x 25 x 3600mm
- 3: Cladding Clips - 1 per joist - fixed to joist using 'Screw for Cladding Clip'
- 4: Colour-coded screw - to recess of the adjacent first cladding board. (Ensure all holes are pre-drilled and countersunk)
- 5: Paveezzi Castellated Panel Cladding Board
- 6: Plastic Pad
- 7: Locking screw for cladding clip