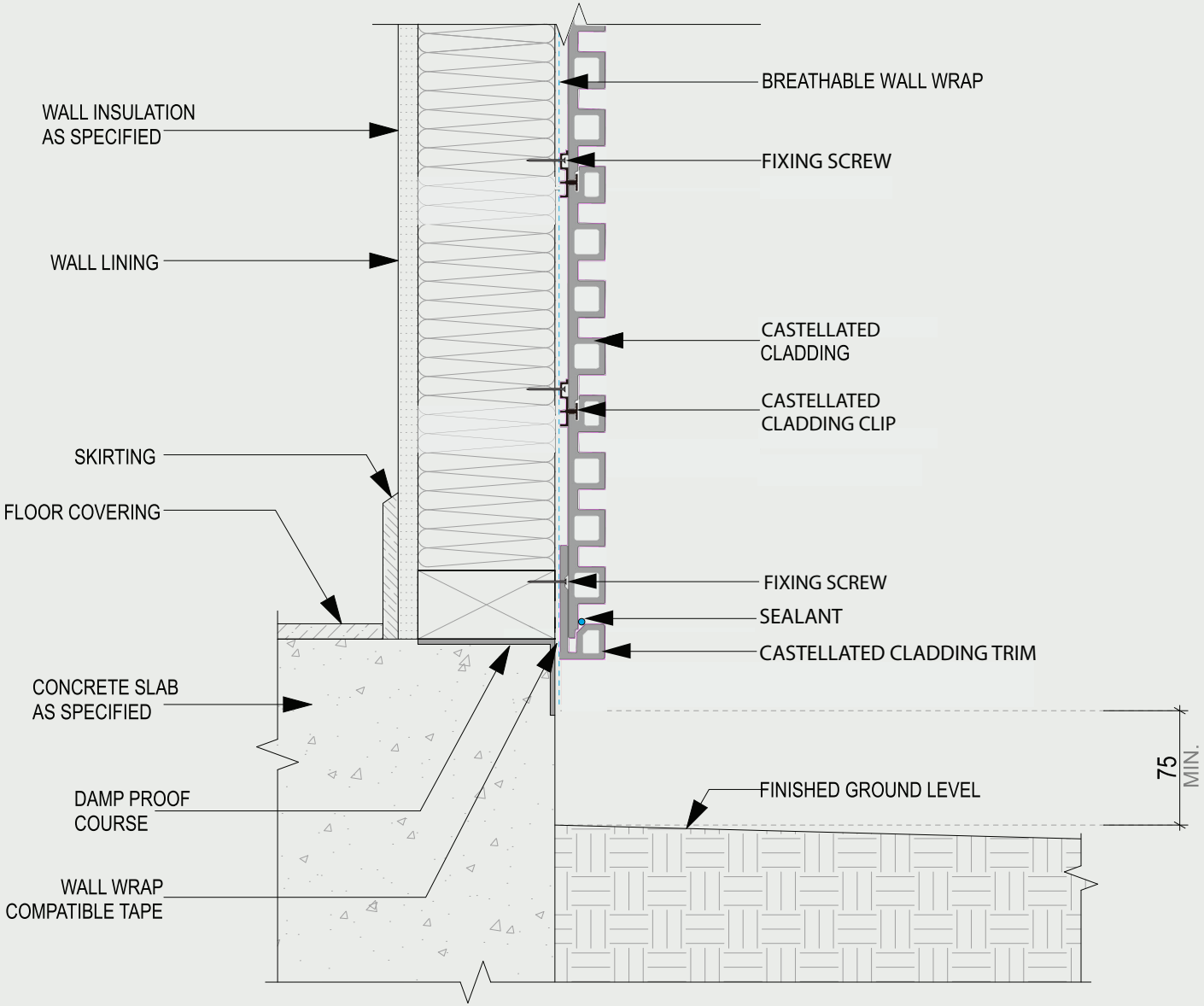


1

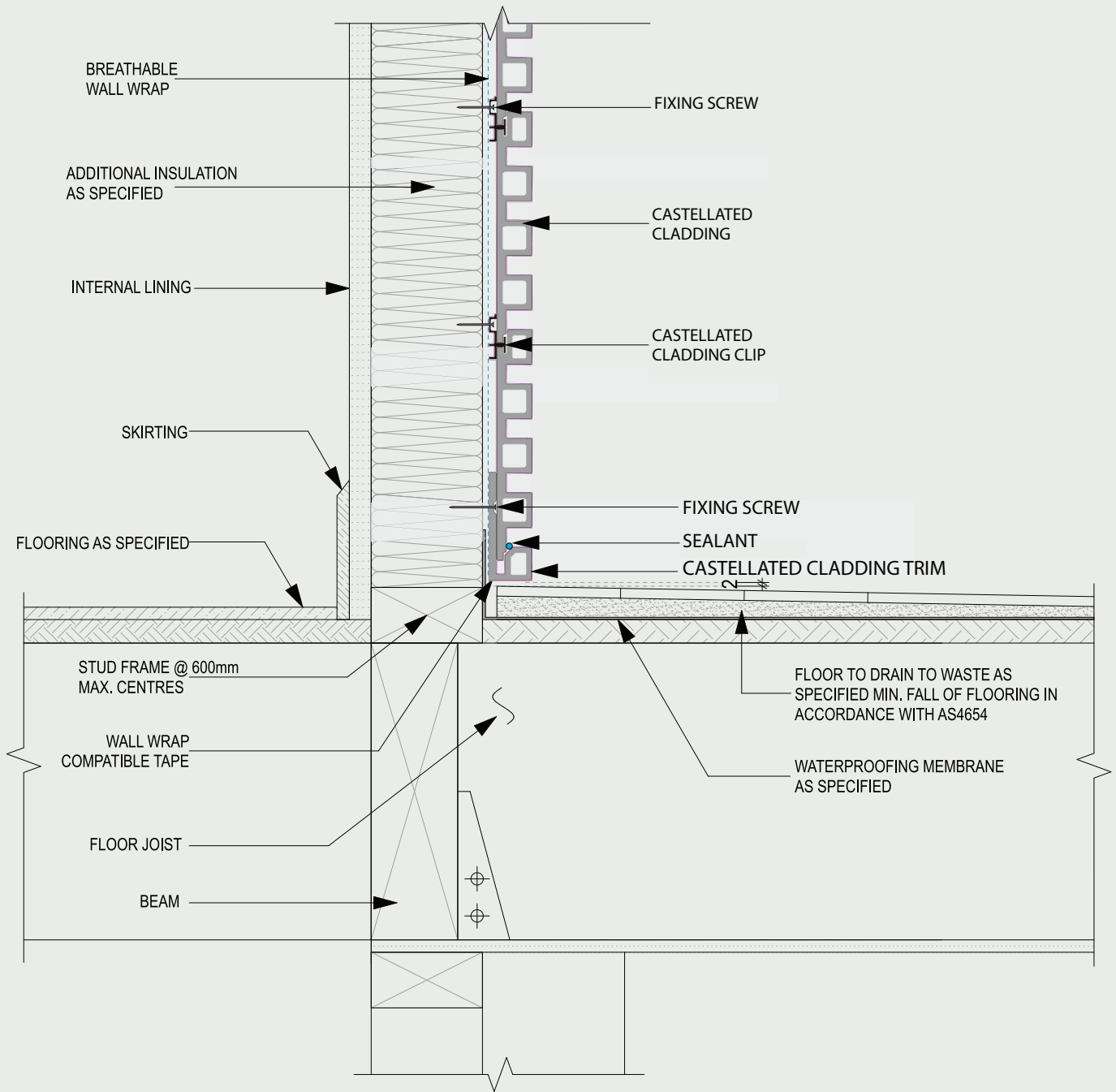


CASTELLATED WIDE 195
Note: follow the same installation steps



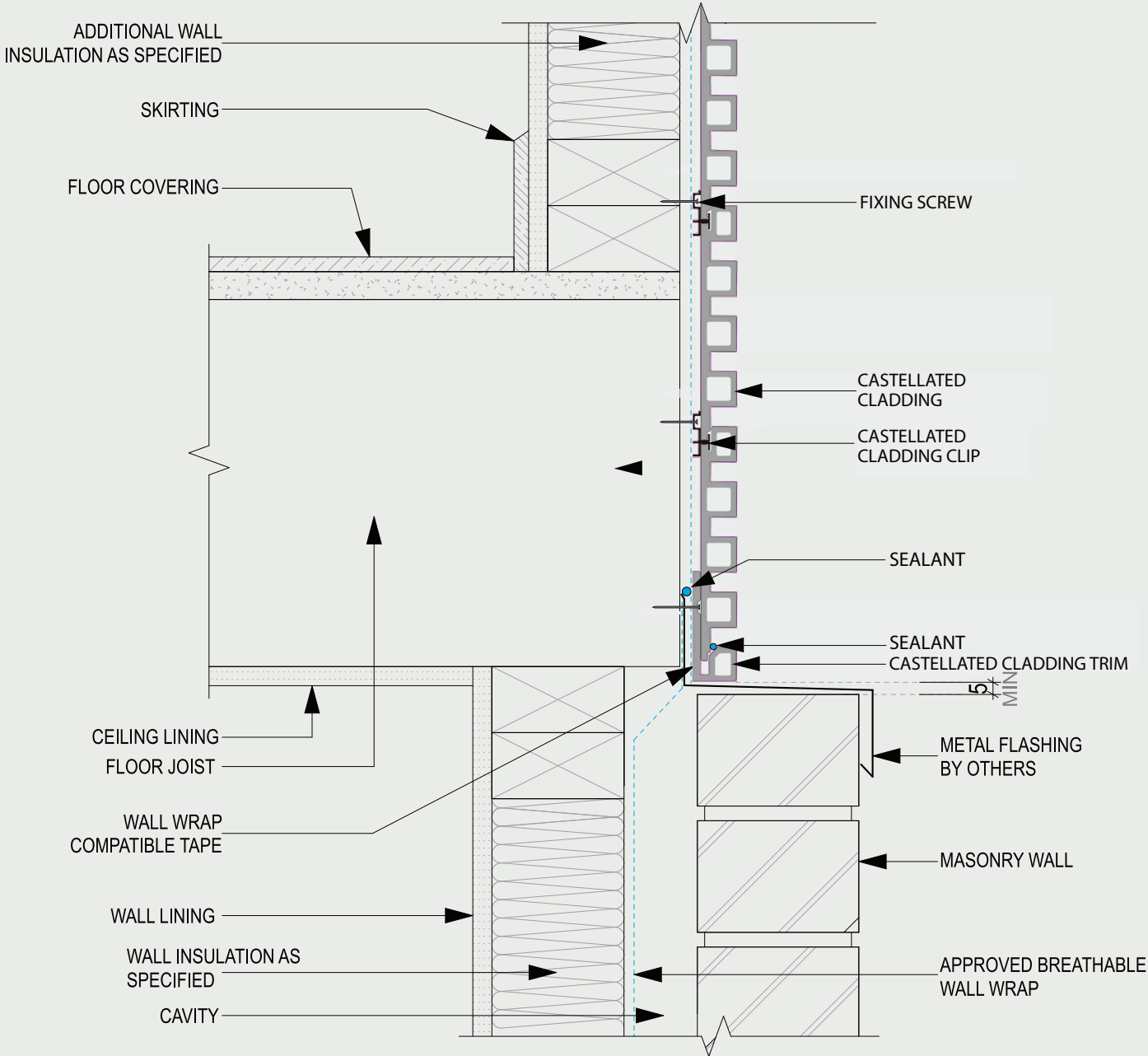


CASTELLATED WIDE 195
 Note: follow the same installation steps



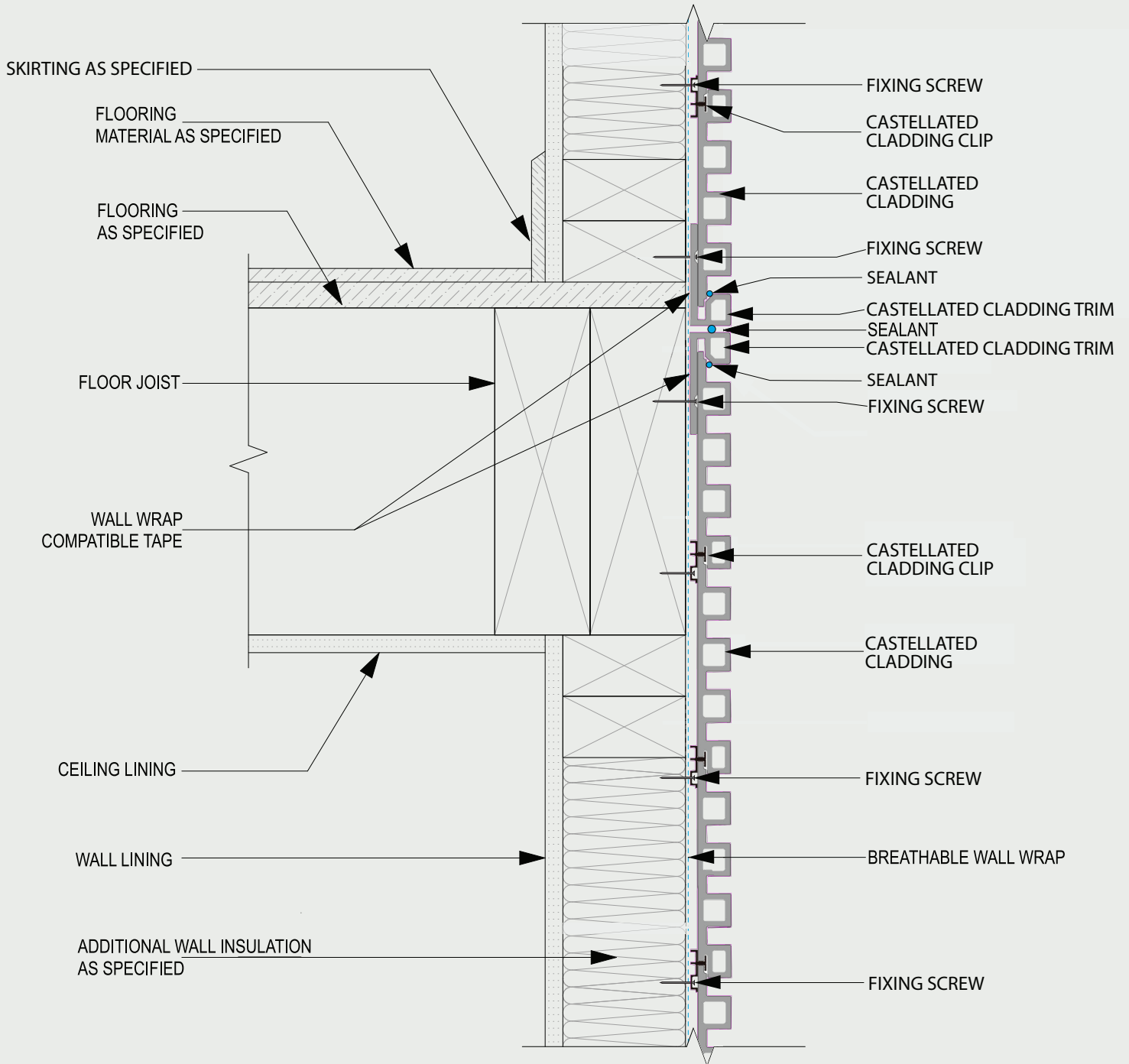


CASTELLATED WIDE 195
 Note: follow the same installation steps



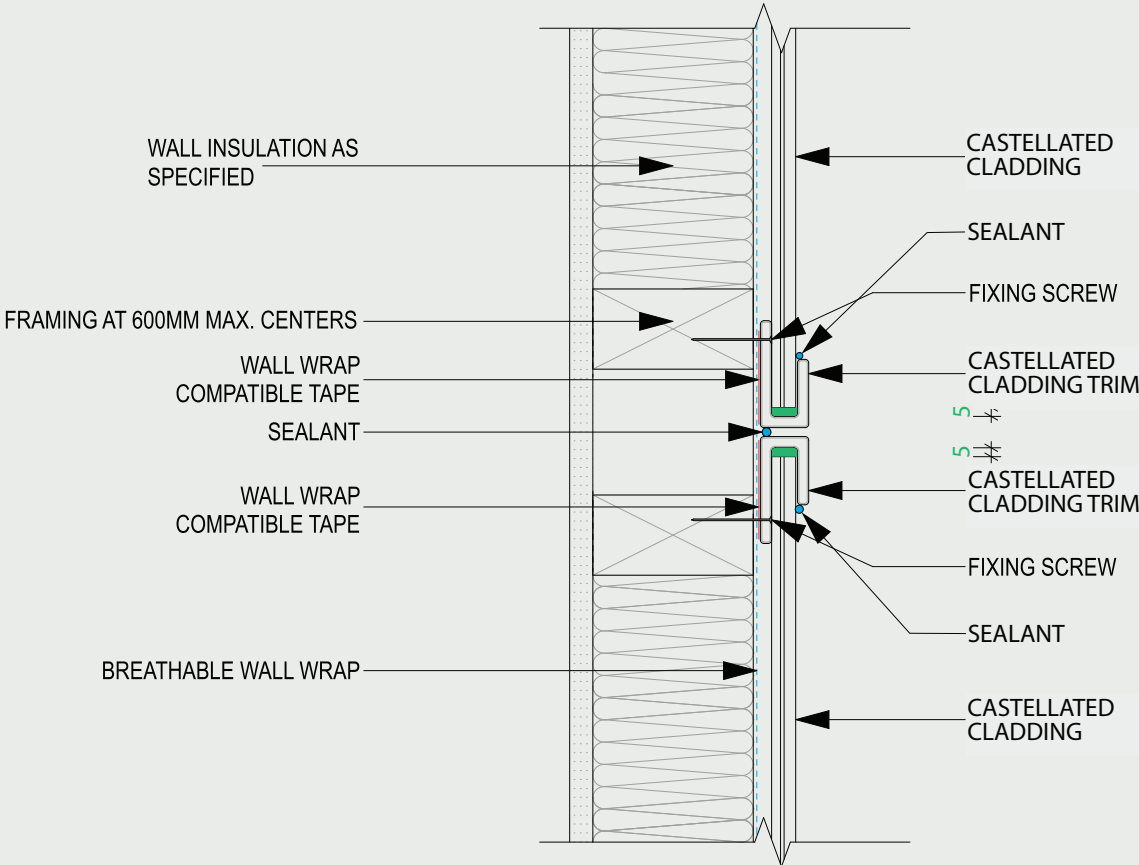


CASTELLATED WIDE 195
 Note: follow the same installation steps

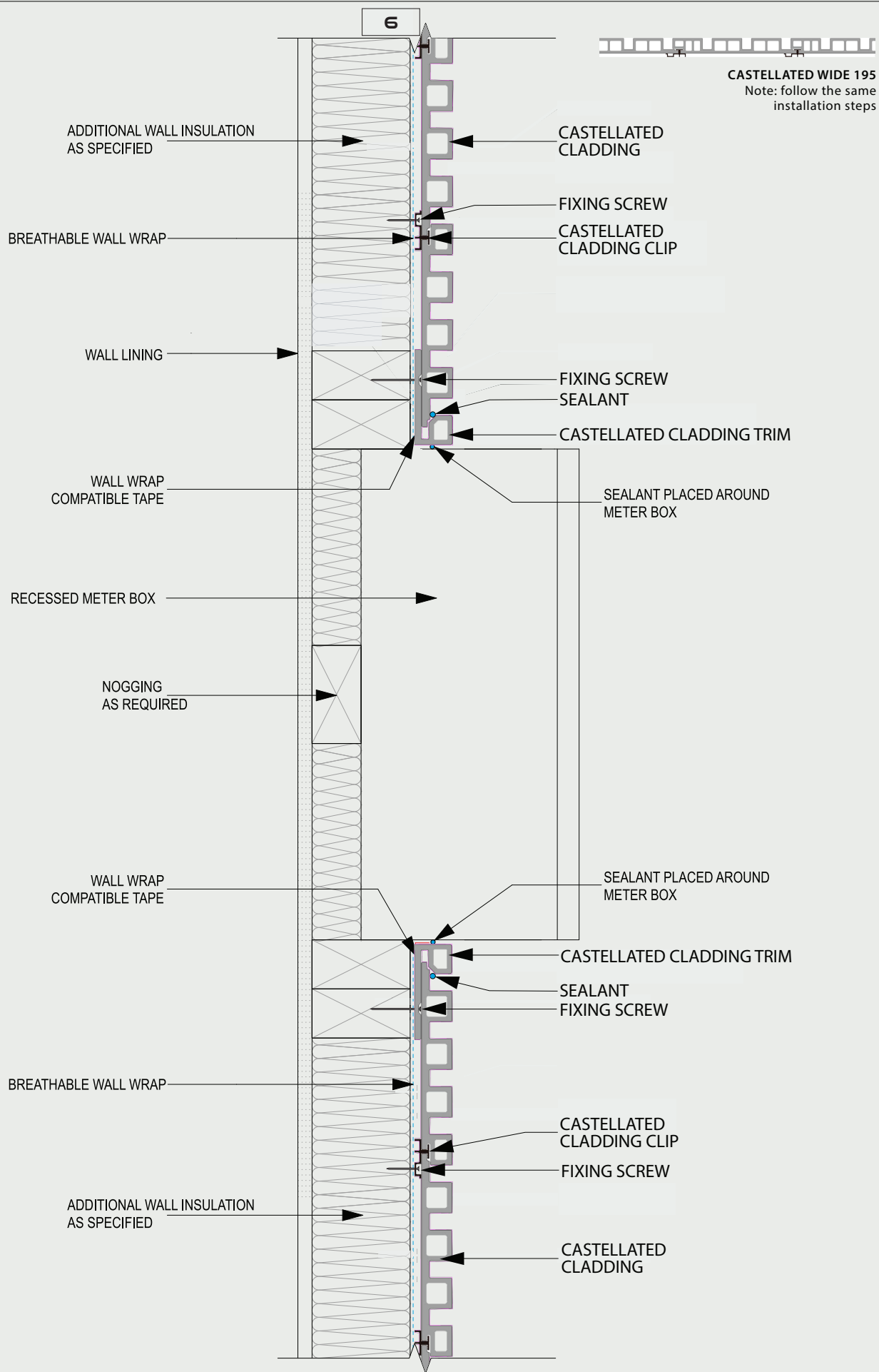




CASTELLATED WIDE 195
 Note: follow the same installation steps

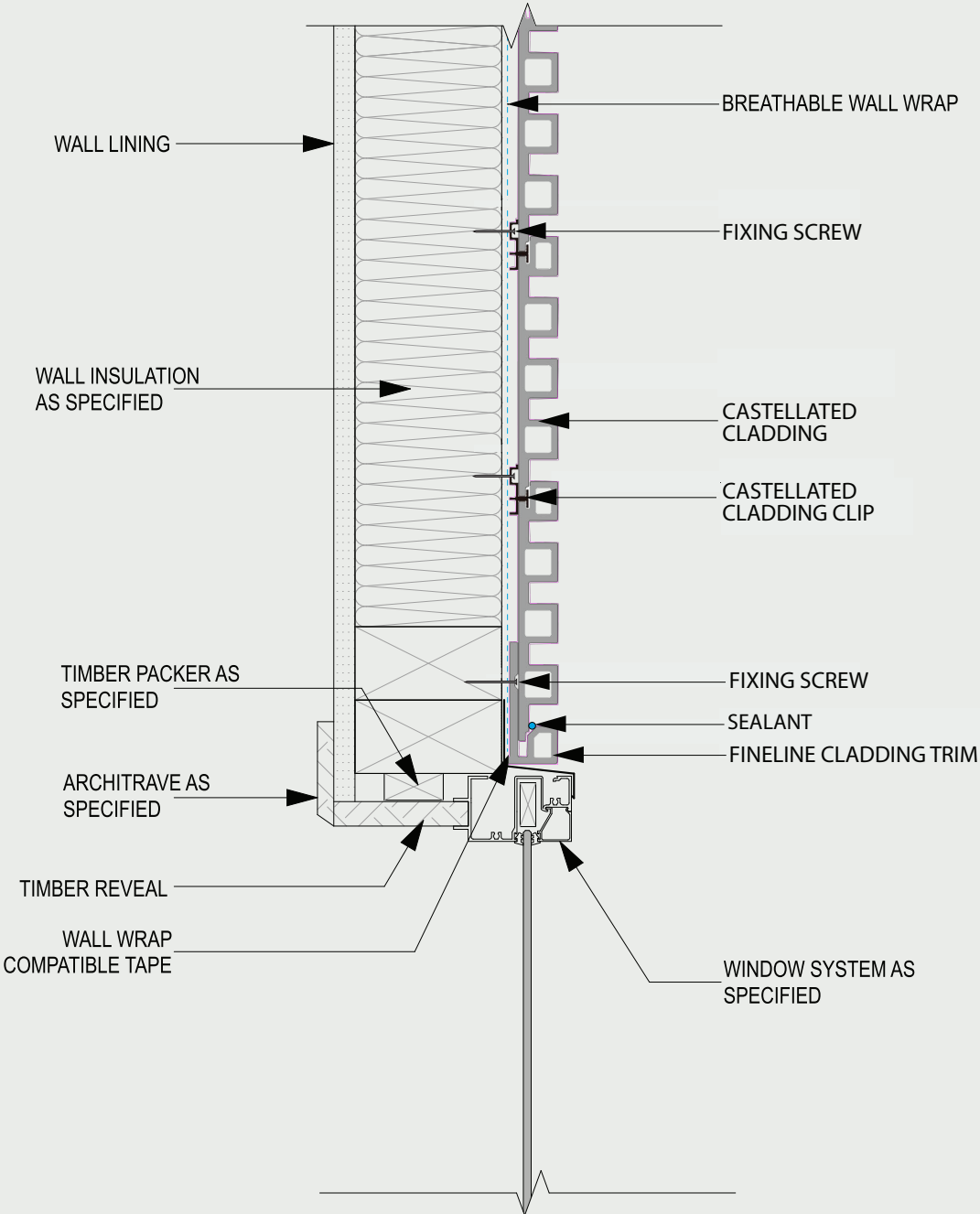


NOTE:
 LEAVE 5mm GAP BETWEEN CLADDING AND TRIM



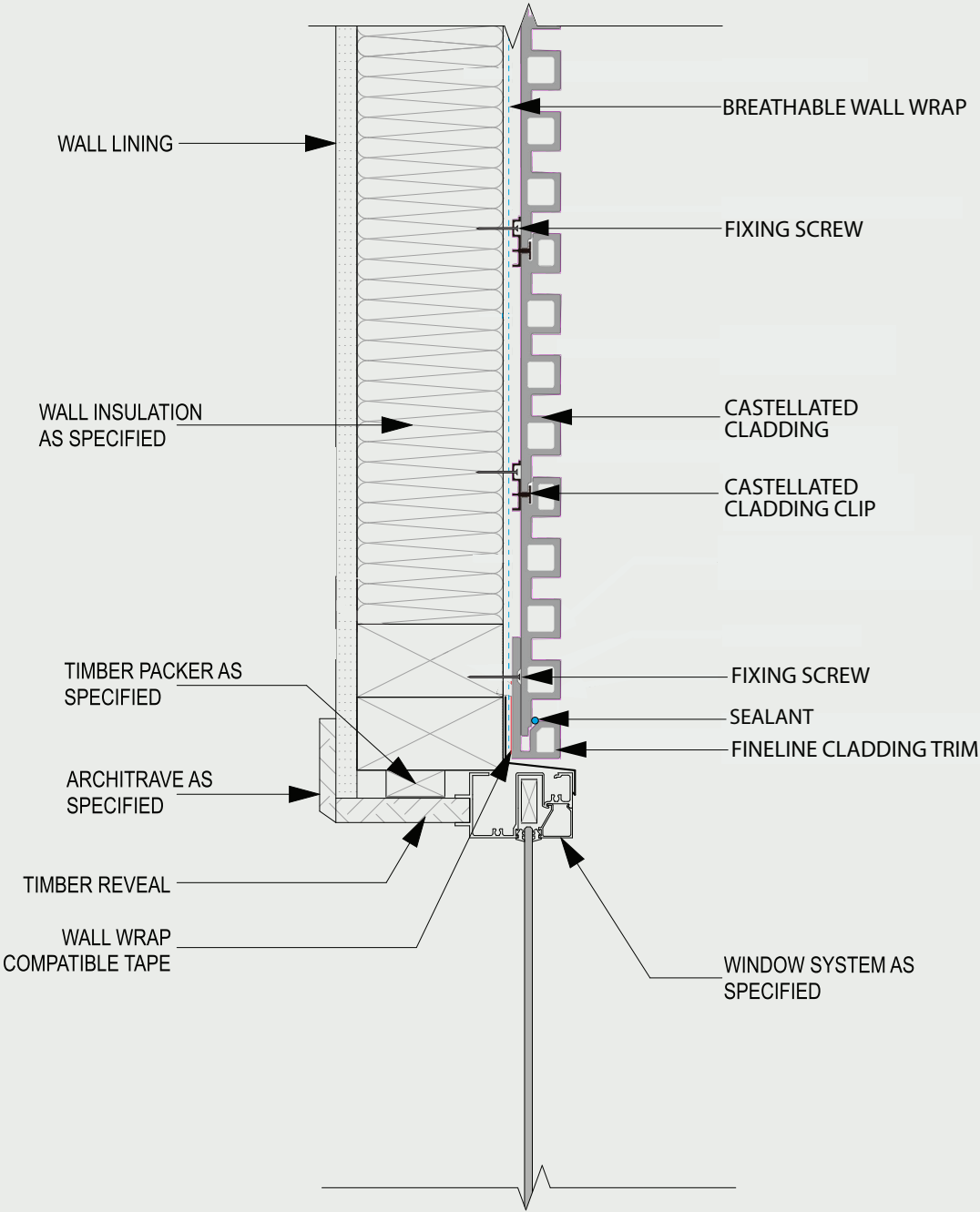


CASTELLATED WIDE 195
 Note: follow the same installation steps



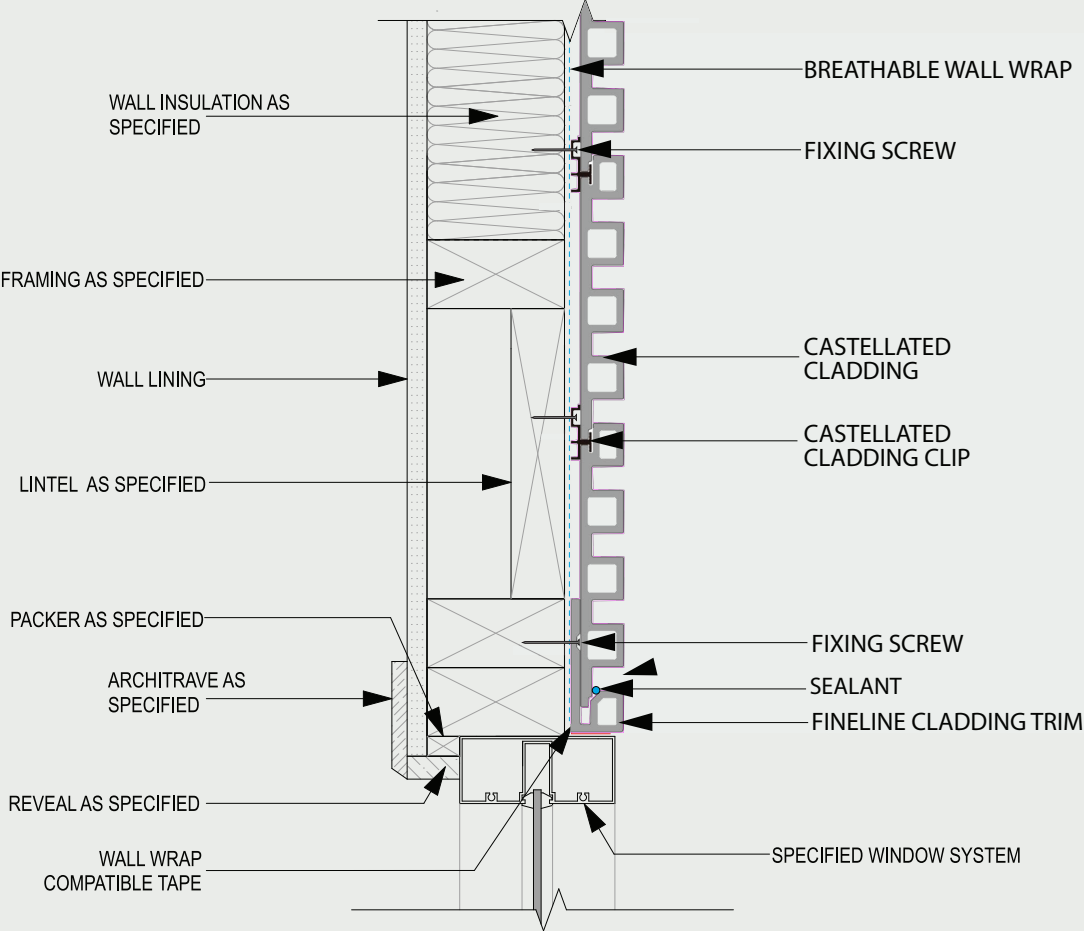


CASTELLATED WIDE 195
 Note: follow the same installation steps



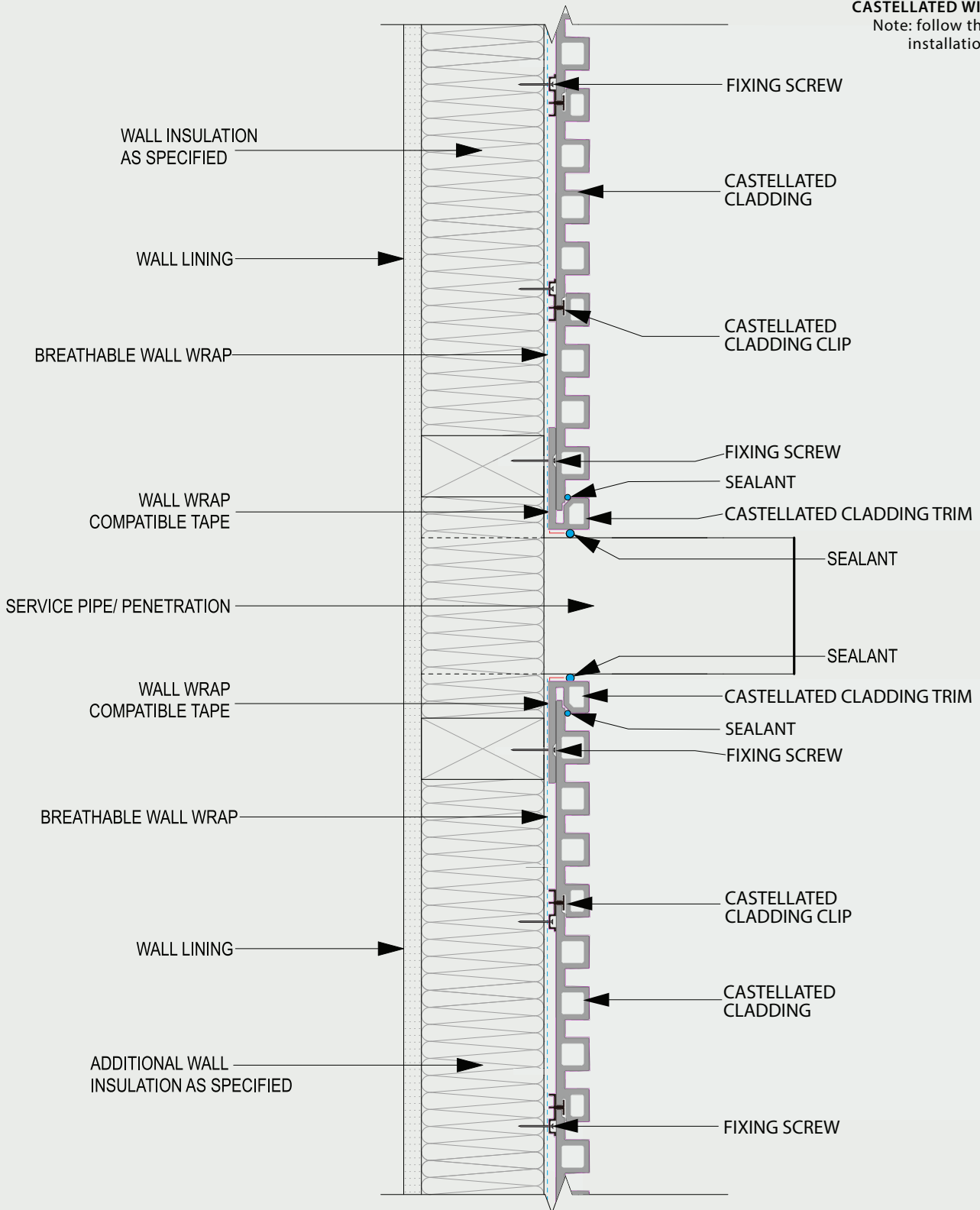


CASTELLATED WIDE 195
 Note: follow the same installation steps



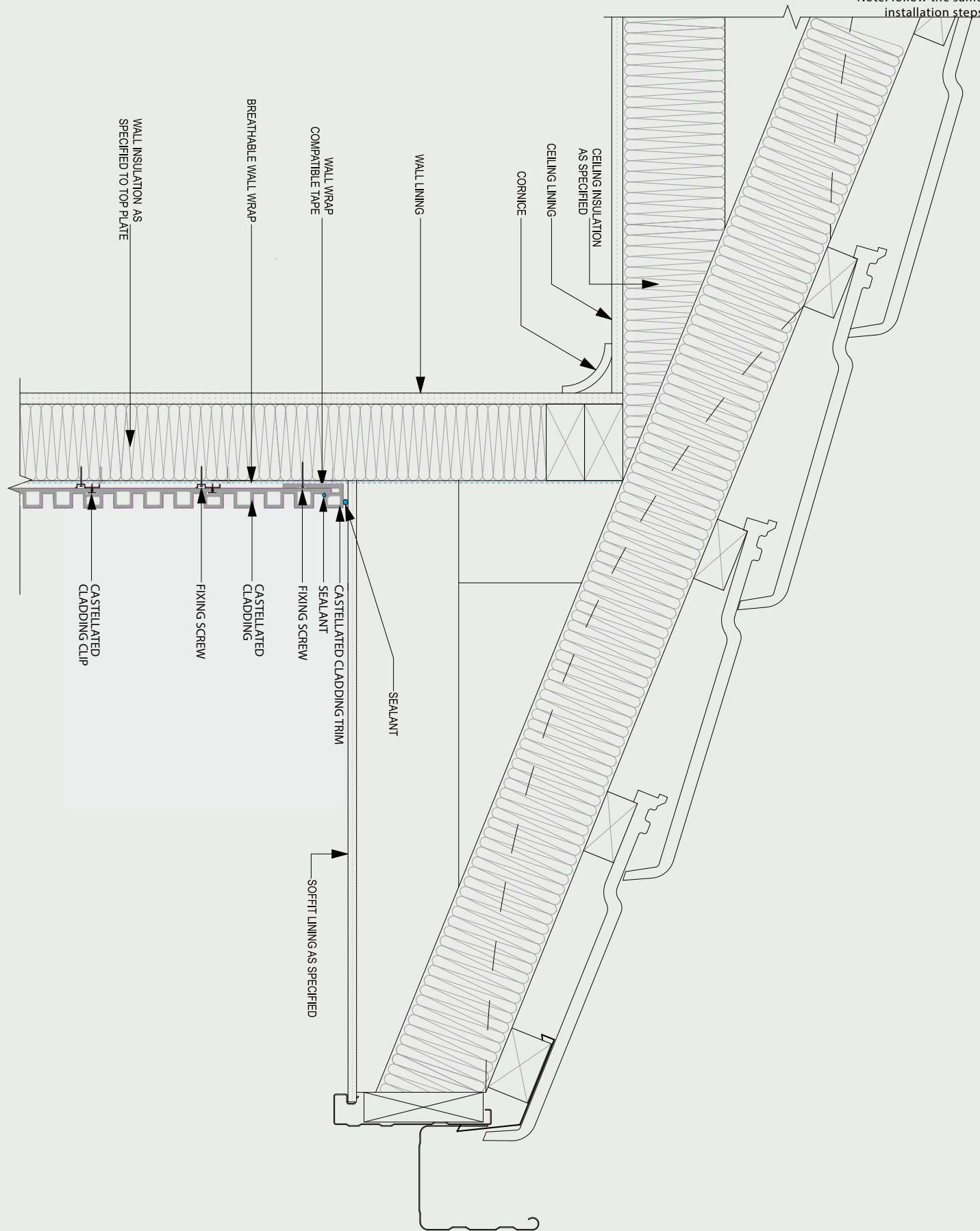


CASTELLATED WIDE 195
 Note: follow the same installation steps





CASTELLATED WIDE 195
 Note: follow the same installation steps



WALL INSULATION AS SPECIFIED TO TOP PLATE

BREATHABLE WALL WRAP

WALL WRAP COMPATIBLE TAPE

WALL LINING

CEILING INSULATION AS SPECIFIED

CEILING LINING

CORNICE

CASTELLATED CLADDING CLIP

CASTELLATED CLADDING

FIXING SCREW

CASTELLATED CLADDING TRIM

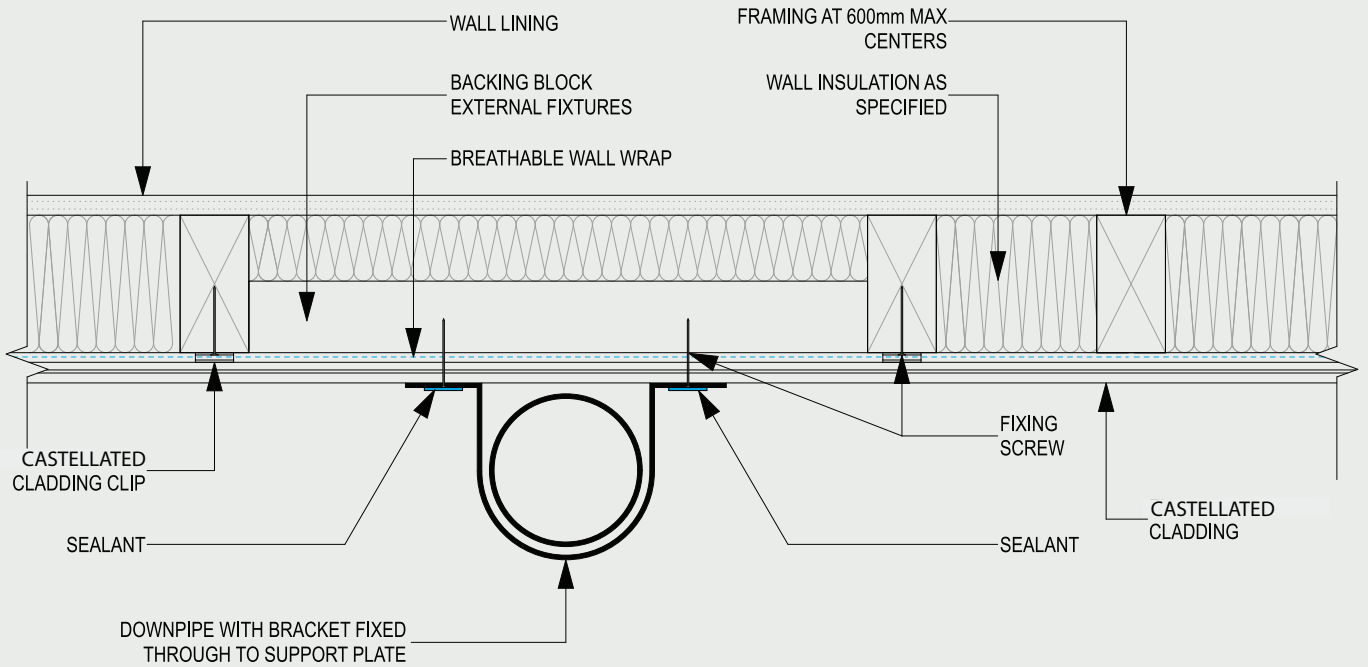
SEALANT

SEALANT

SOFFIT LINING AS SPECIFIED

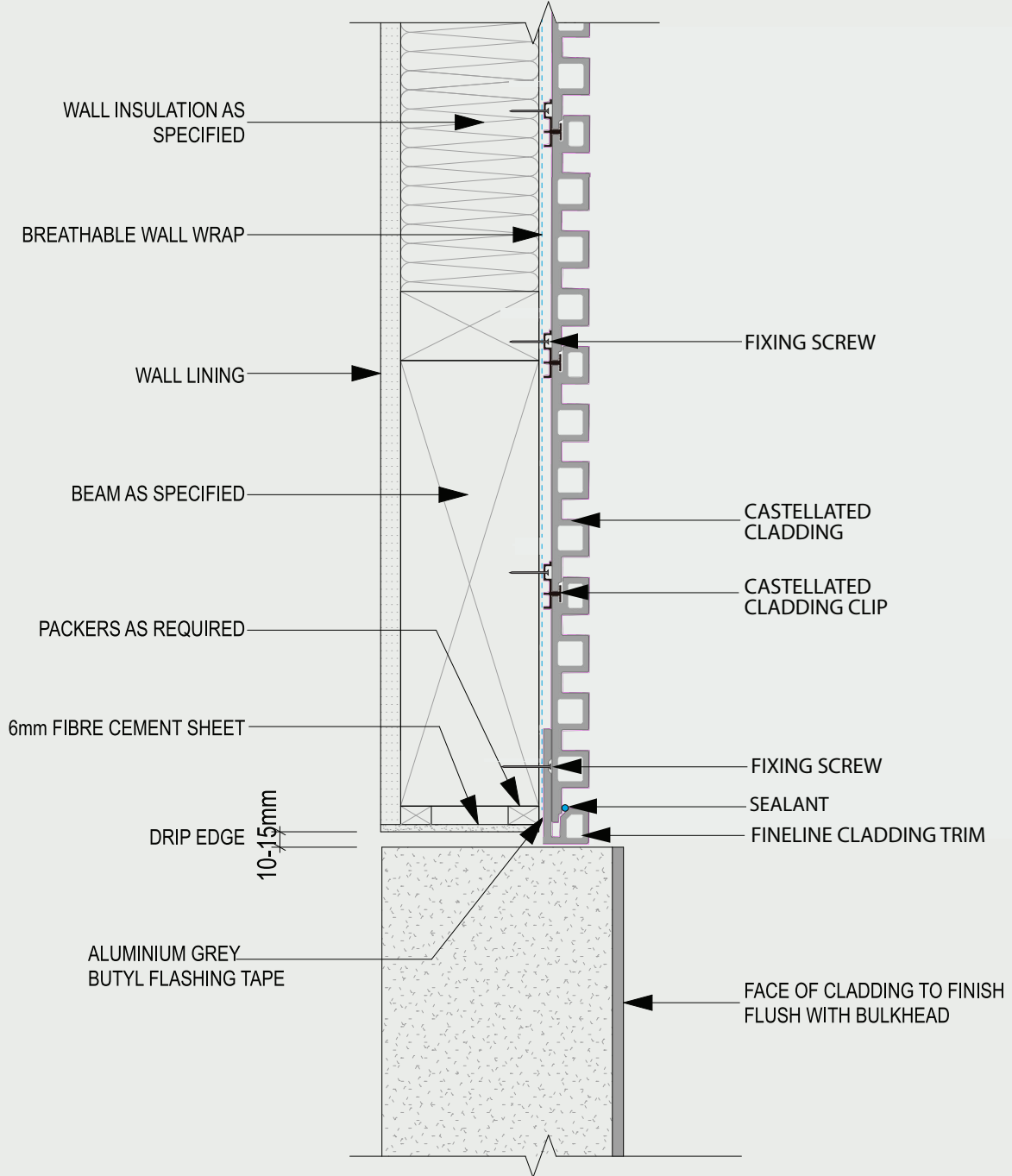


CASTELLATED WIDE 195
Note: follow the same installation steps



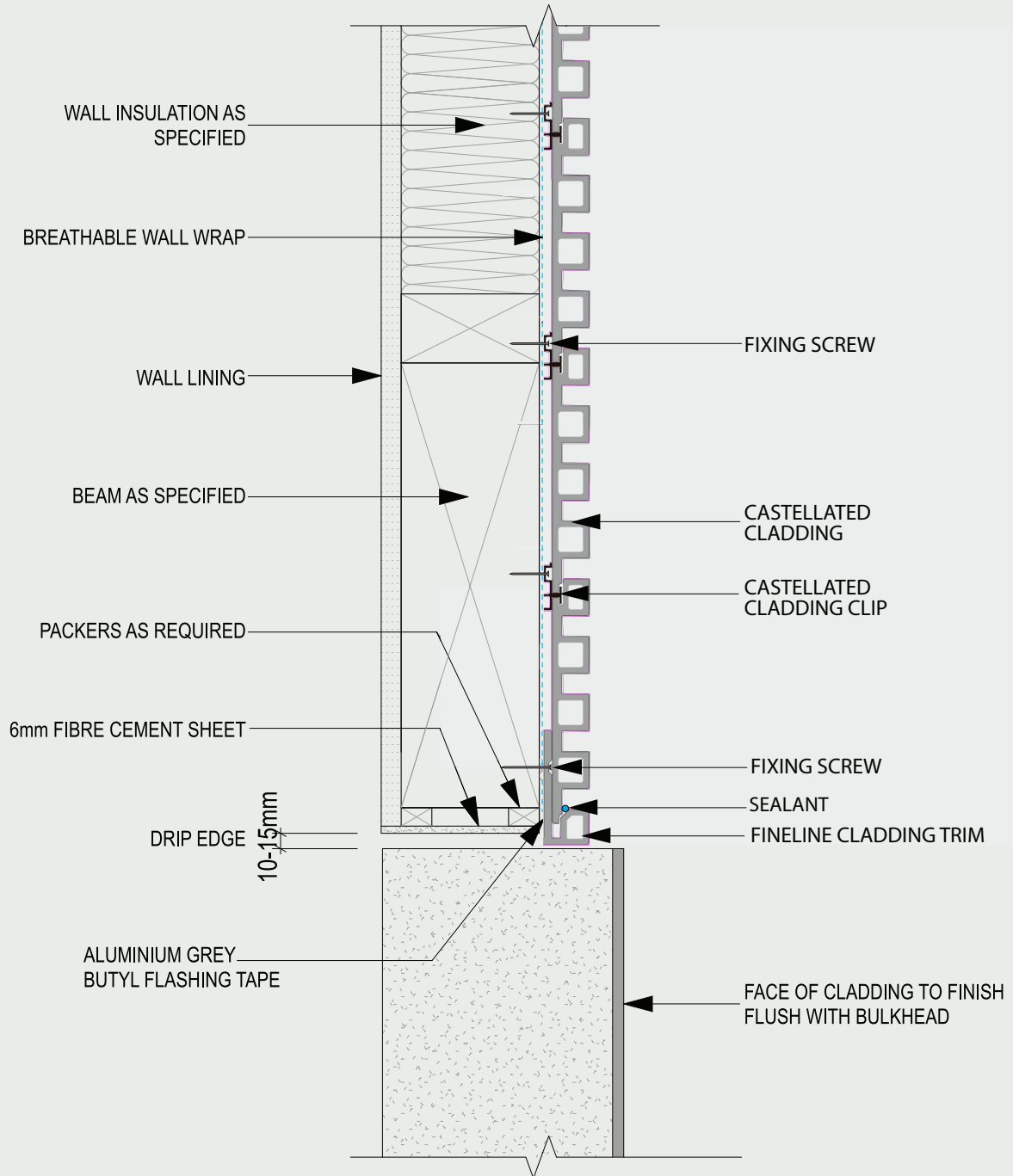


CASTELLATED WIDE 195
 Note: follow the same installation steps



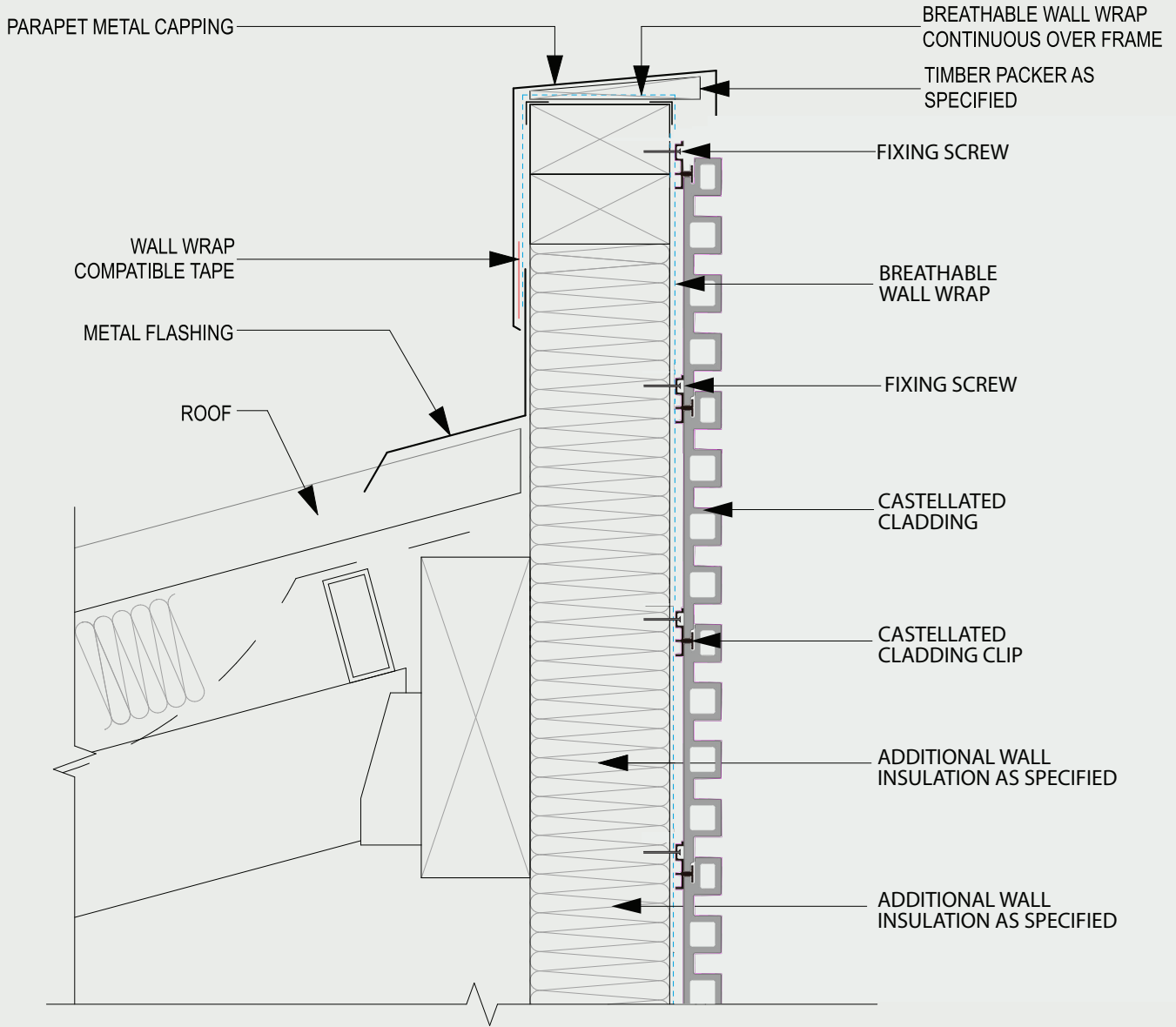


CASTELLATED WIDE 195
 Note: follow the same installation steps



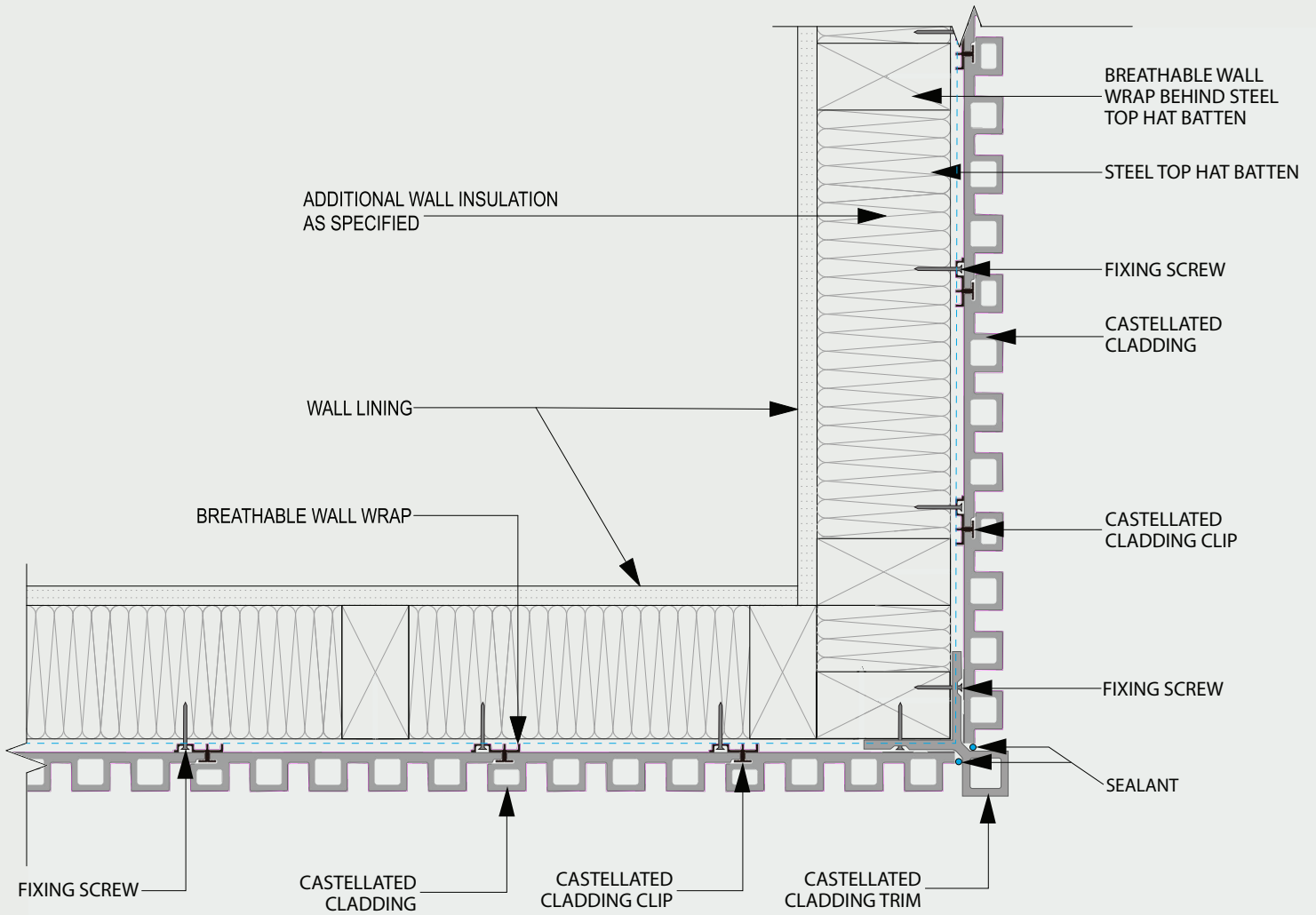


CASTELLATED WIDE 195
 Note: follow the same installation steps



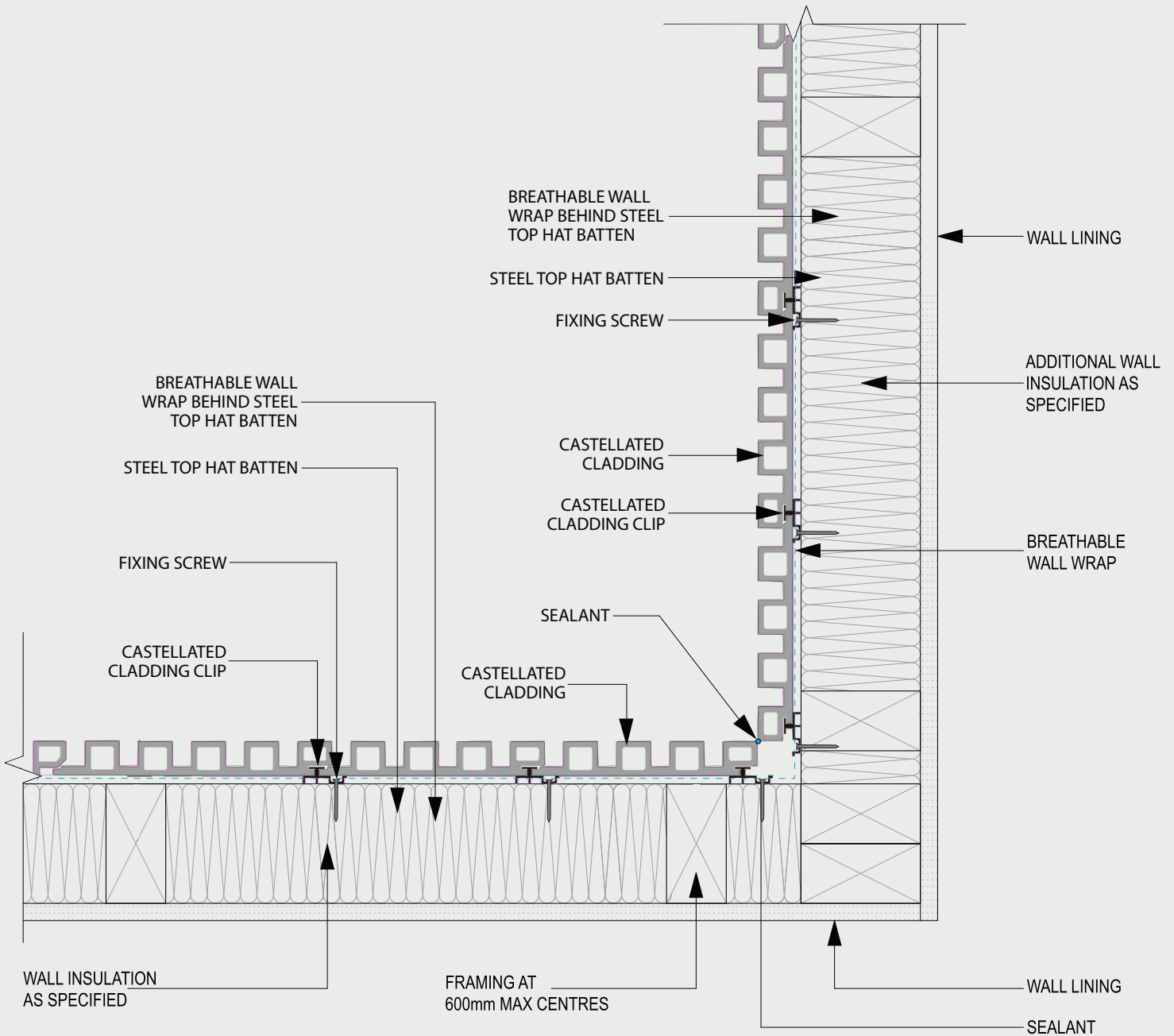


CASTELLATED WIDE 195
 Note: follow the same installation steps





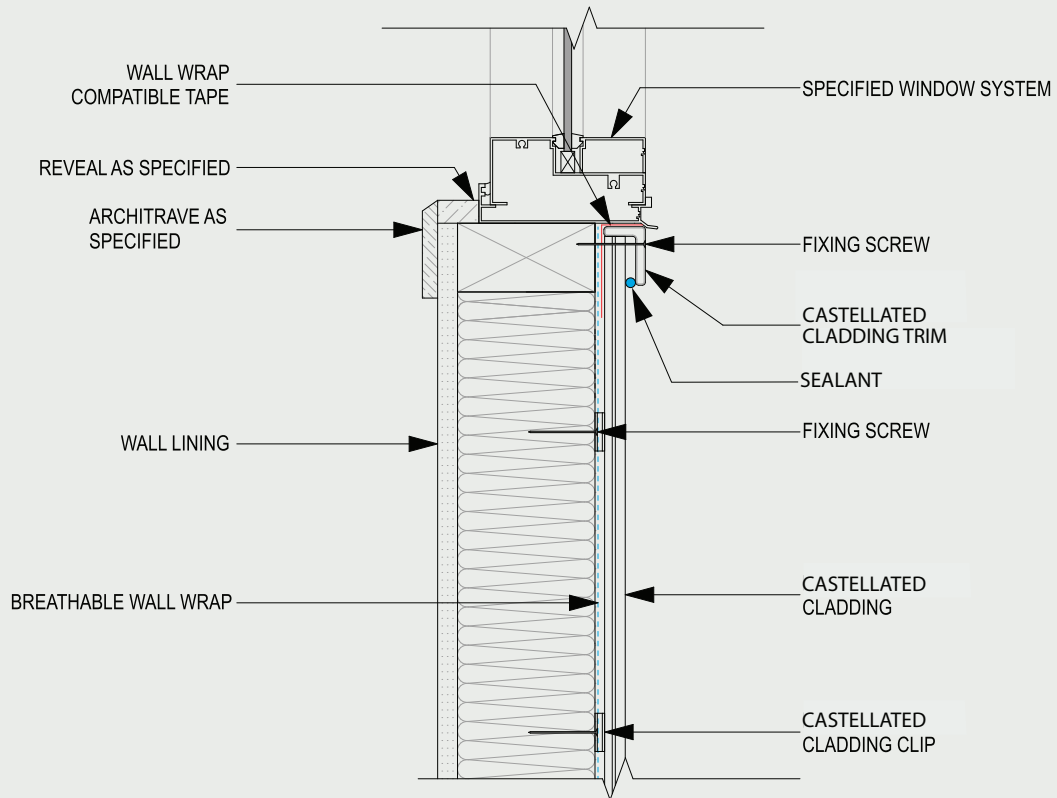
CASTELLATED WIDE 195
 Note: follow the same installation steps



NOTE:
 LEAVE 5mm GAP BETWEEN EKODECK SHIPLAP AND J-SECTION

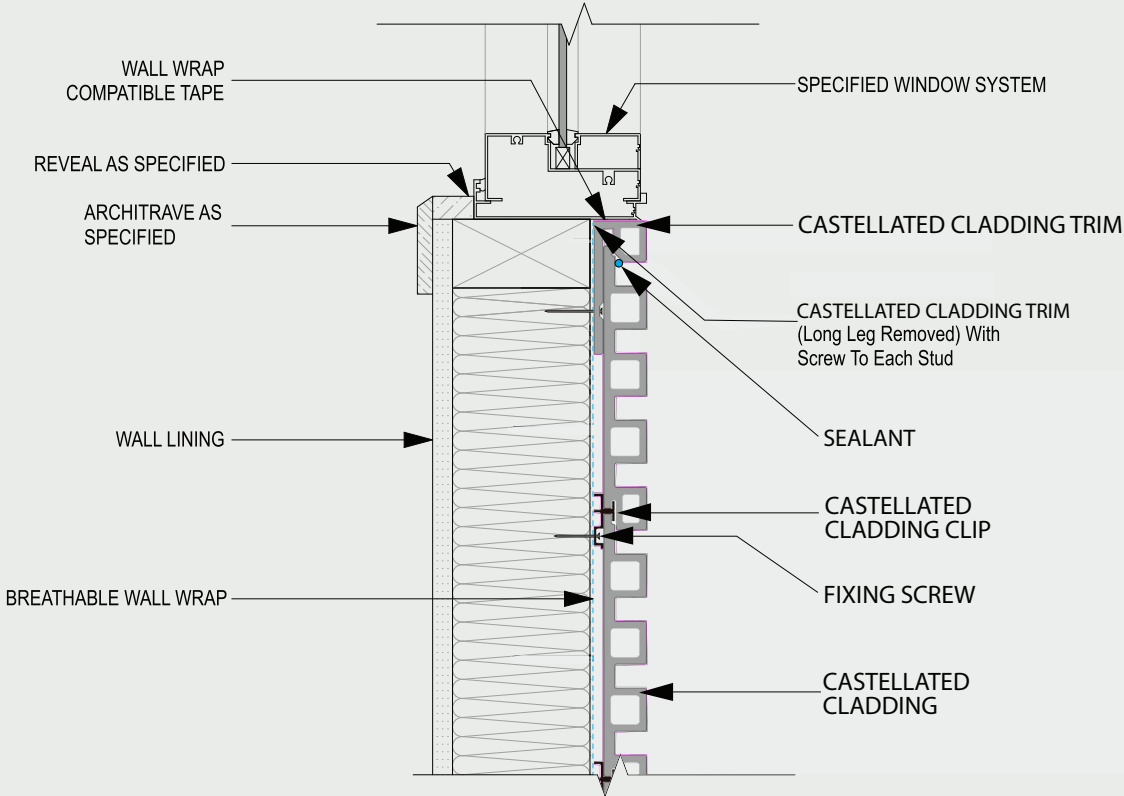


CASTELLATED WIDE 195
Note: follow the same installation steps



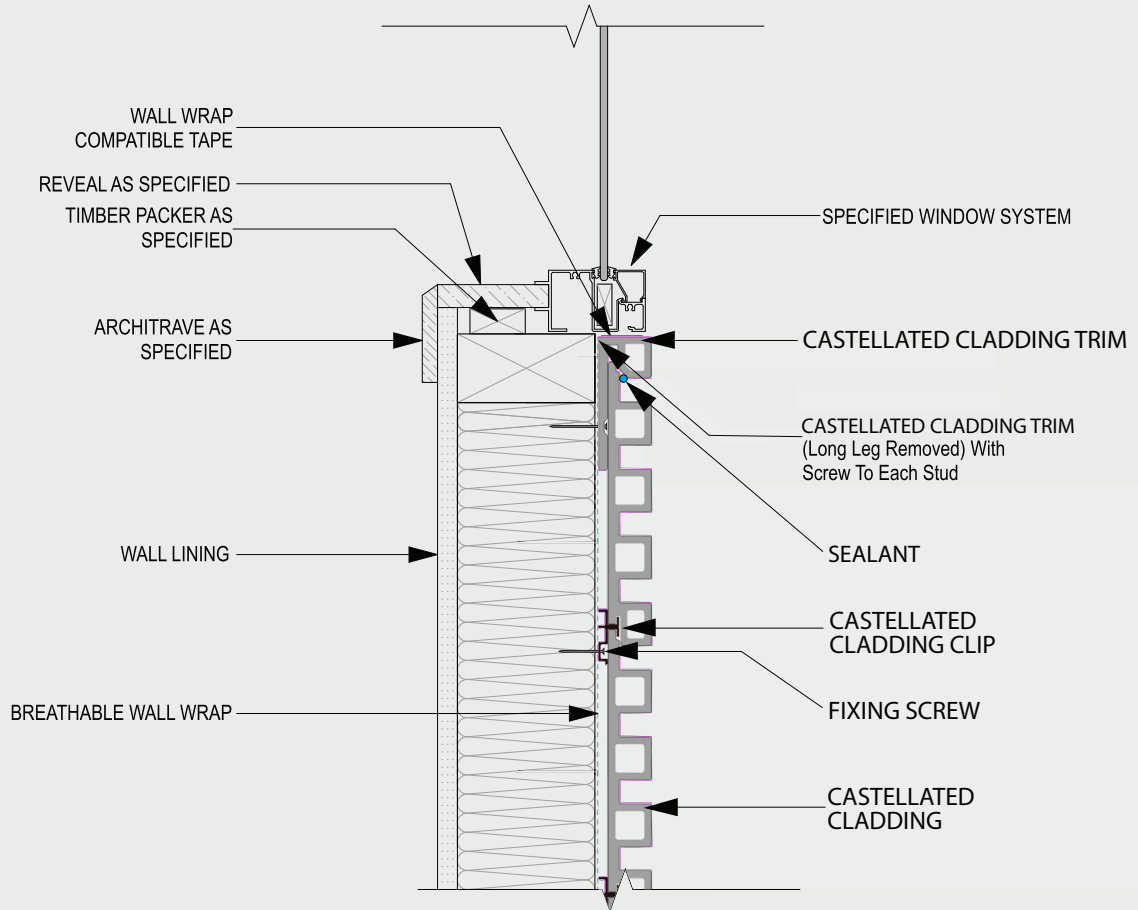


CASTELLATED WIDE 195
 Note: follow the same installation steps





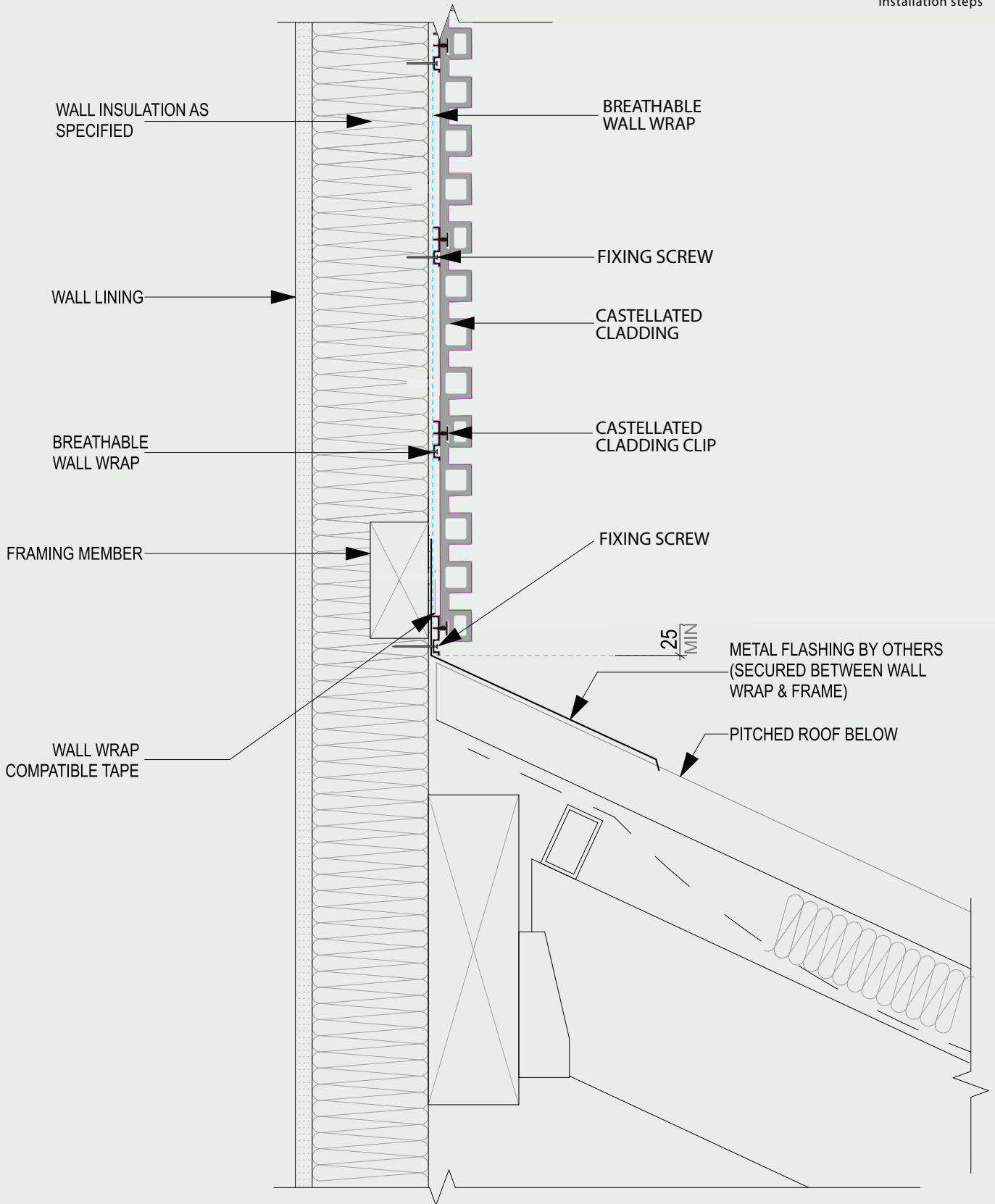
CASTELLATED WIDE 195
 Note: follow the same installation steps





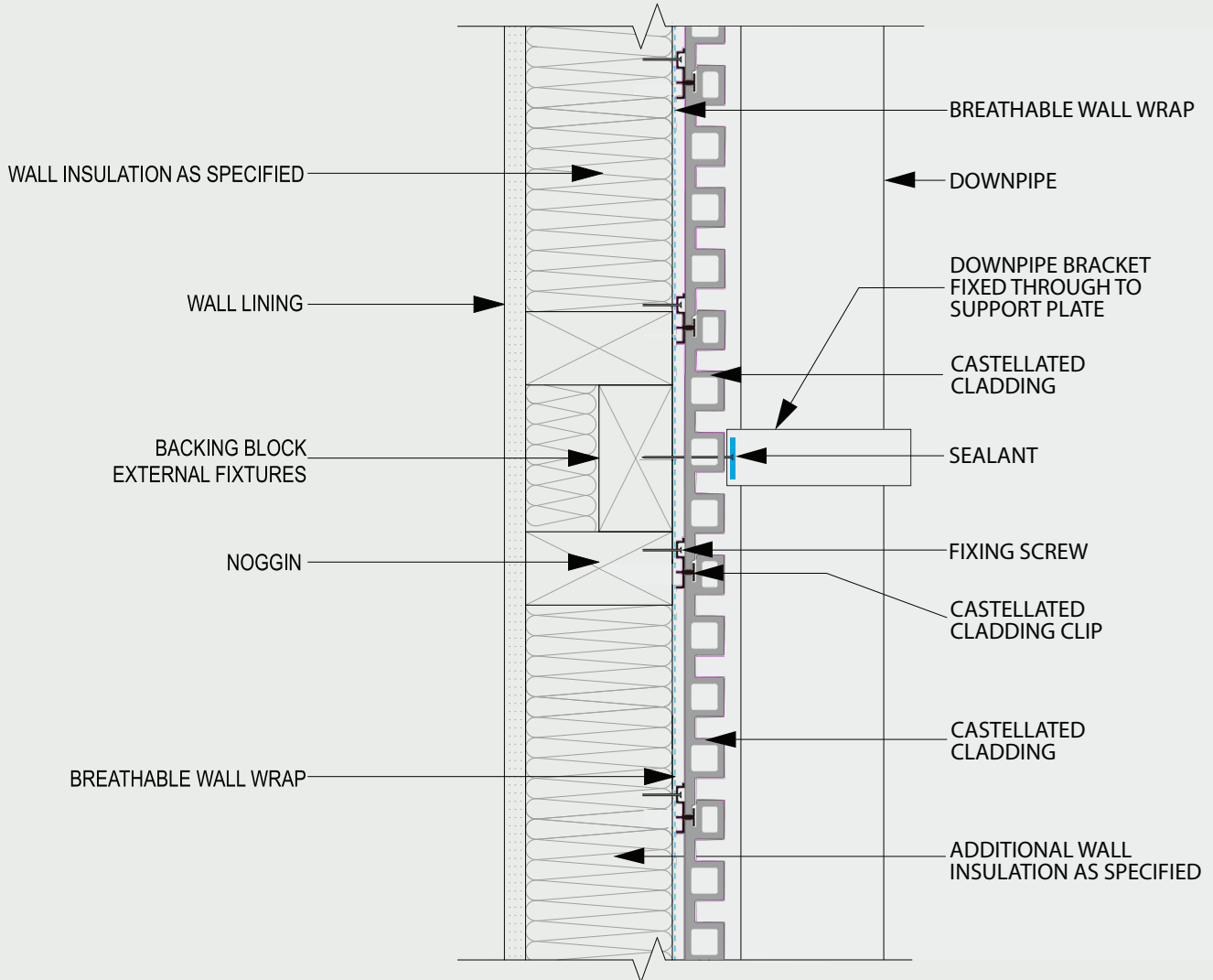
CASTELLATED WIDE 195

Note: follow the same installation steps



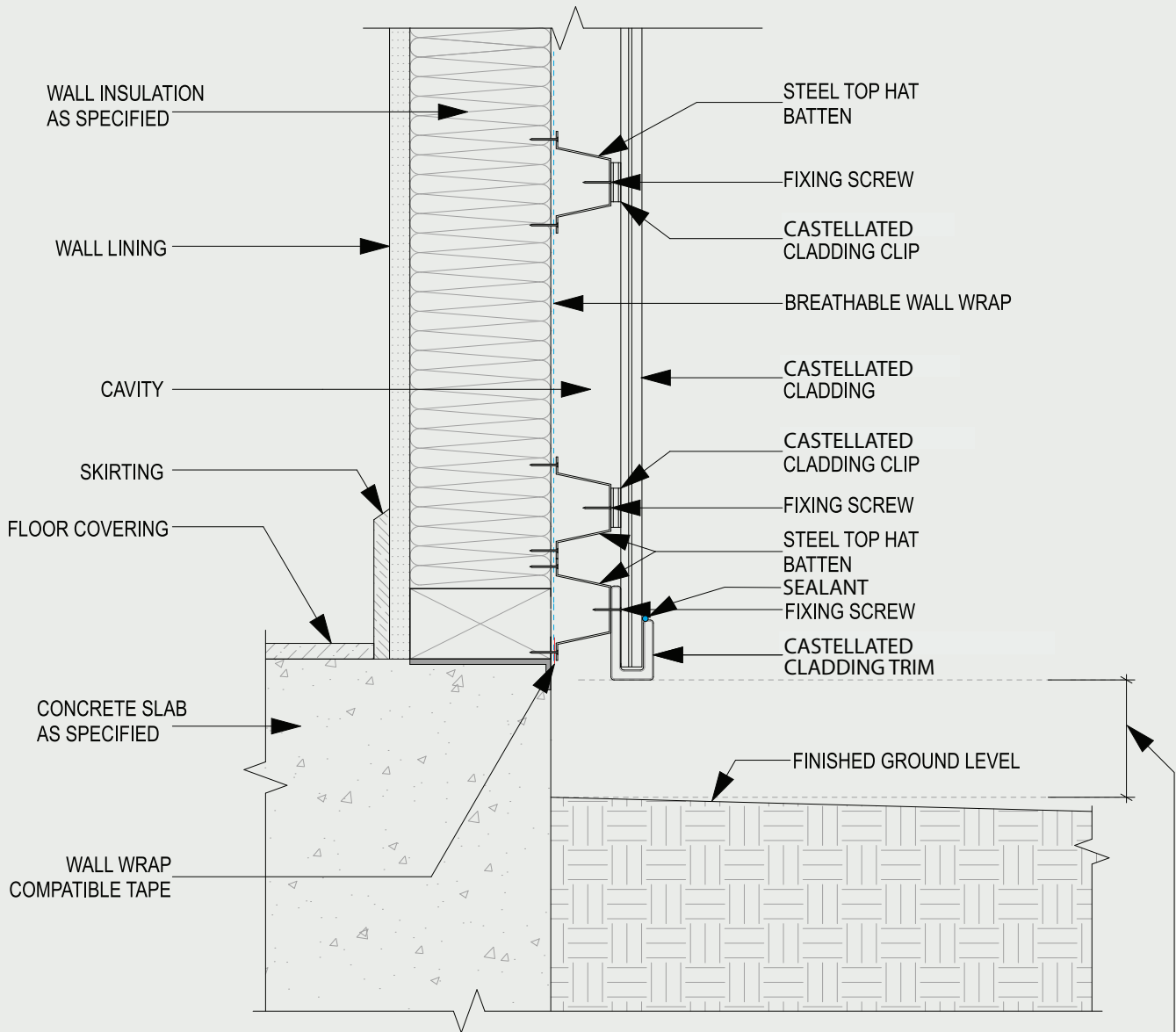


CASTELLATED WIDE 195
 Note: follow the same installation steps





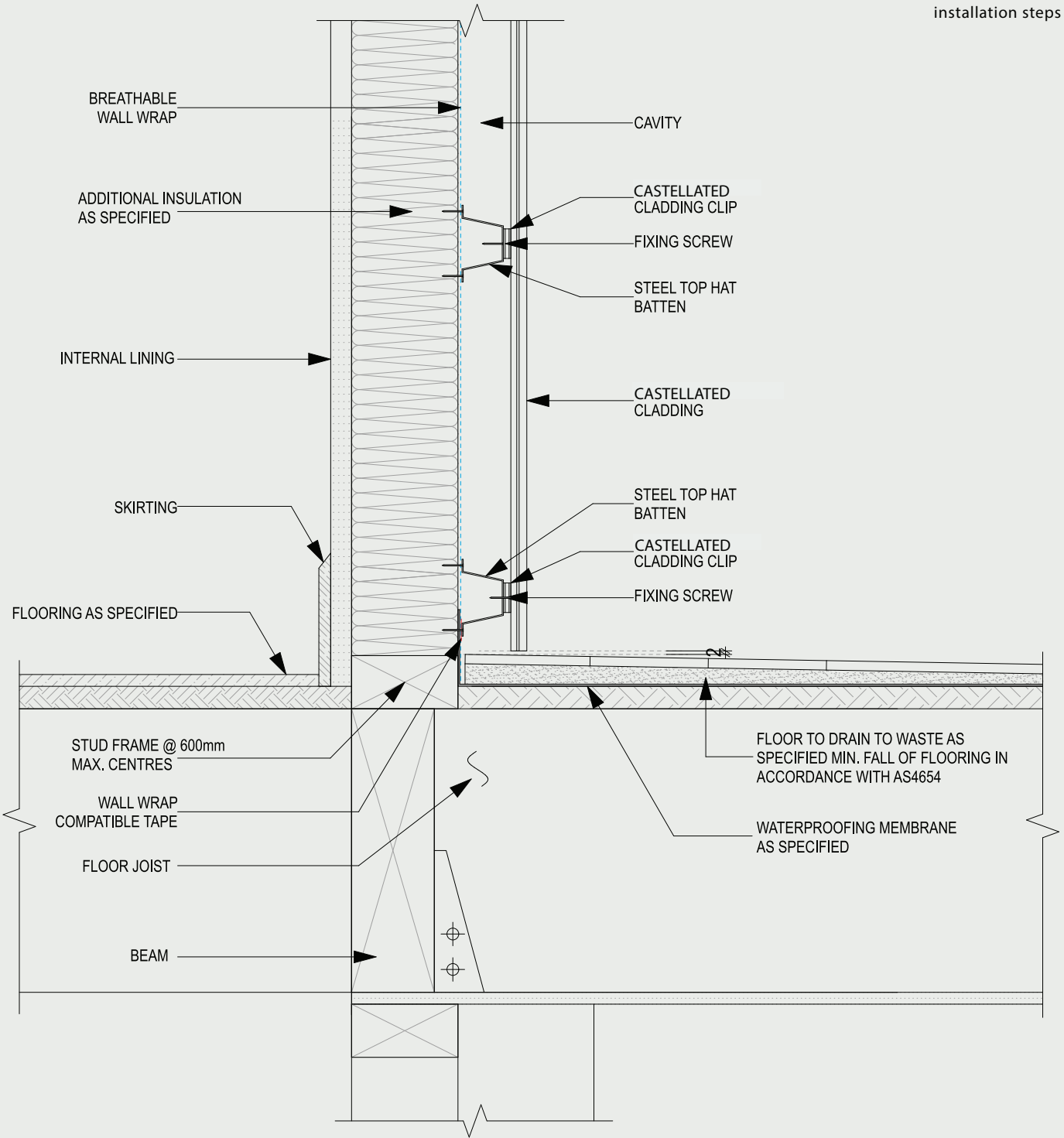
CASTELLATED WIDE 195
 Note: follow the same installation steps



CLEARANCE AS PER THE BCA REQUIREMENTS FOR THE INTENDED APPLICATION
 e.g. as per the specifications in Part 7.5.7 of the ABCB Housing Provisions

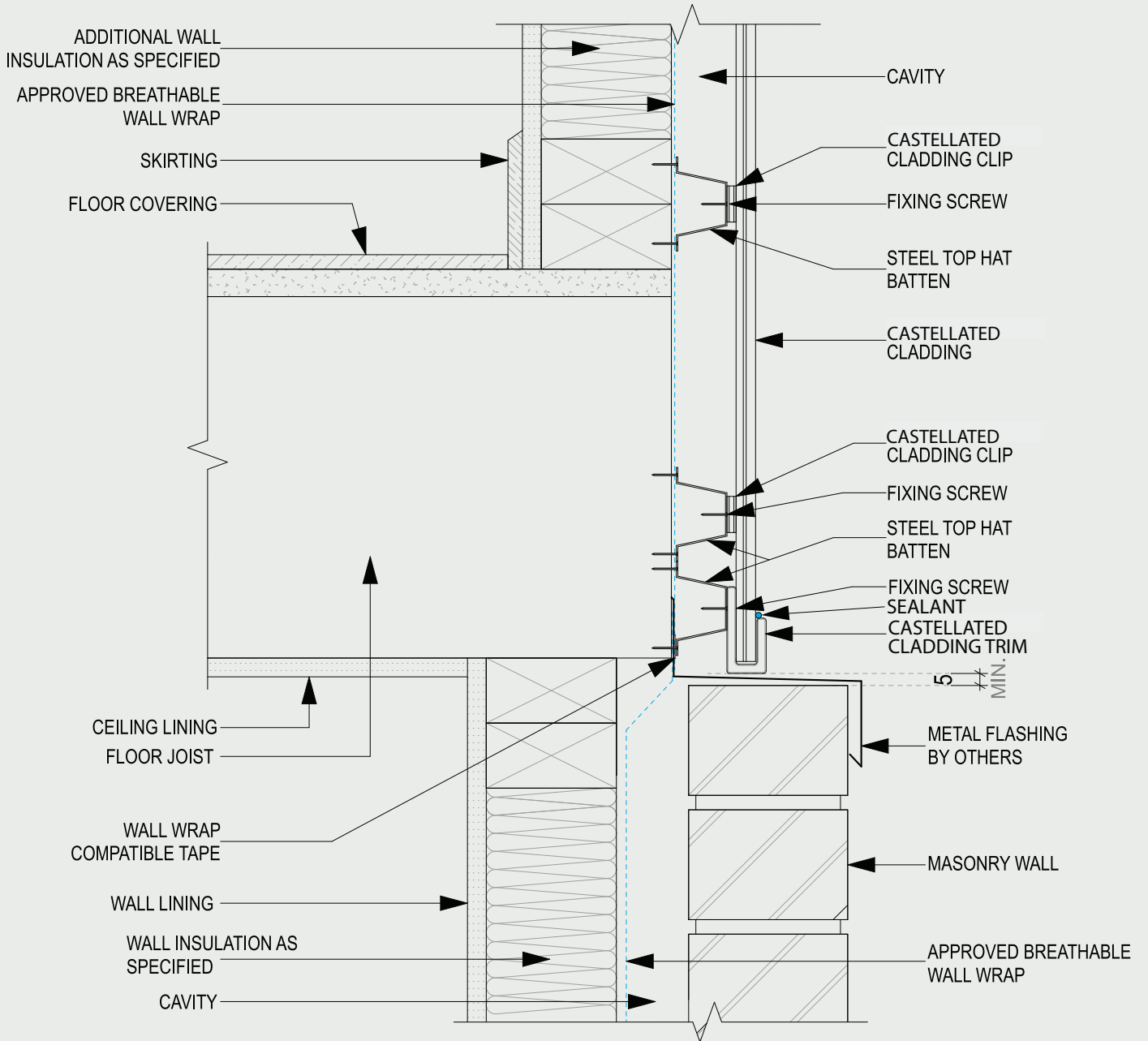


CASTELLATED WIDE 195
 Note: follow the same installation steps



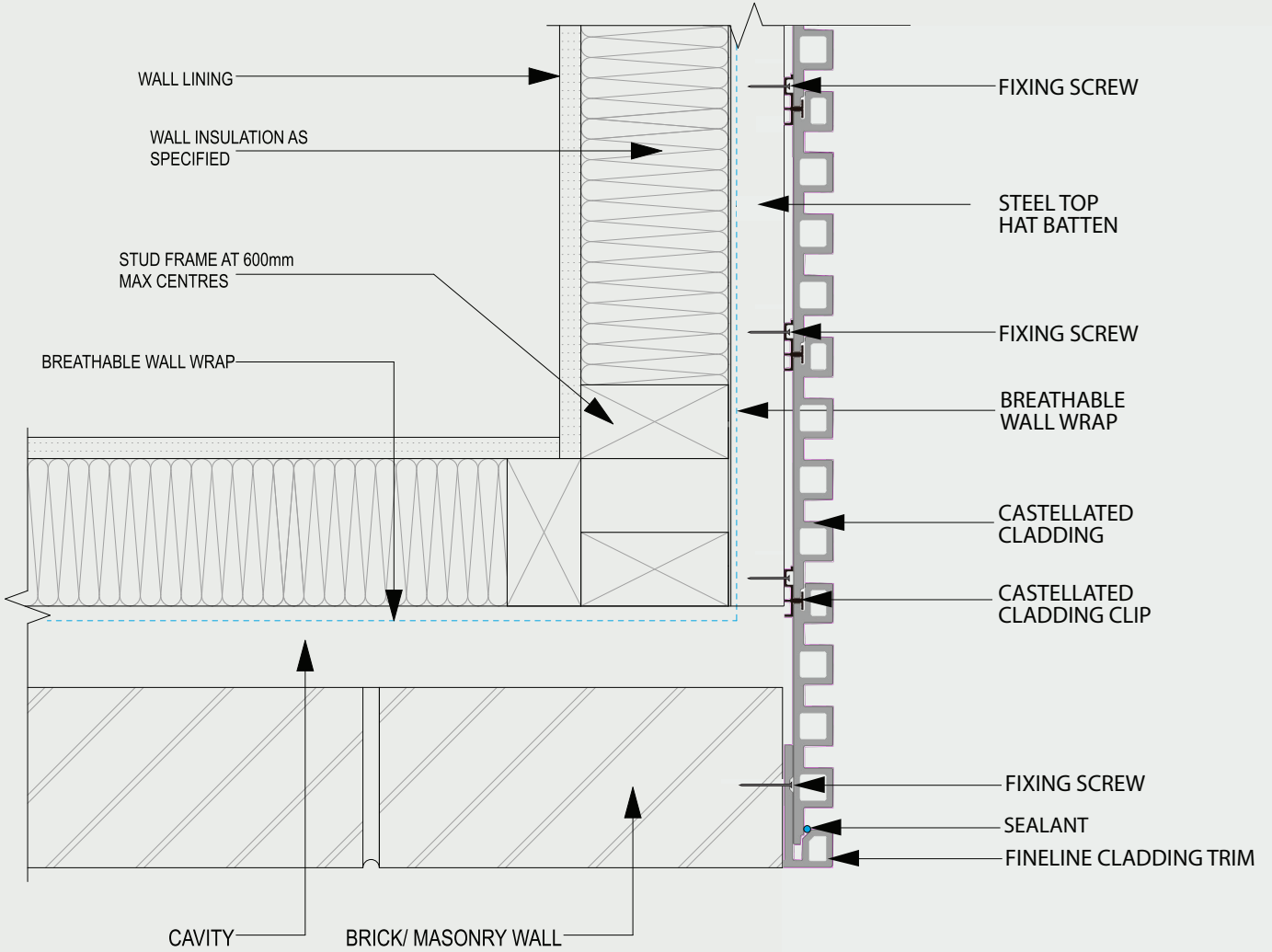


CASTELLATED WIDE 195
 Note: follow the same installation steps



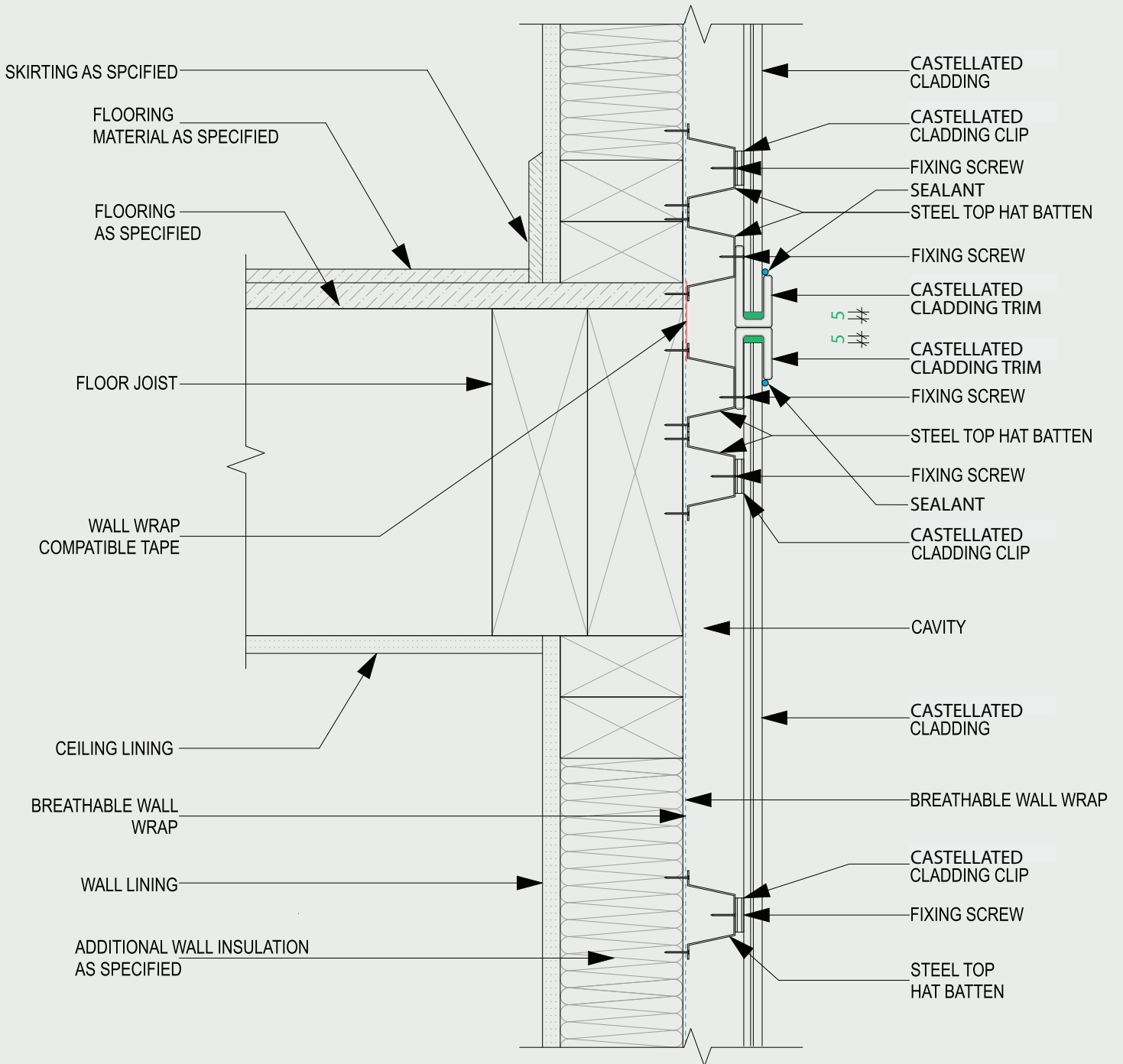


CASTELLATED WIDE 195
 Note: follow the same installation steps





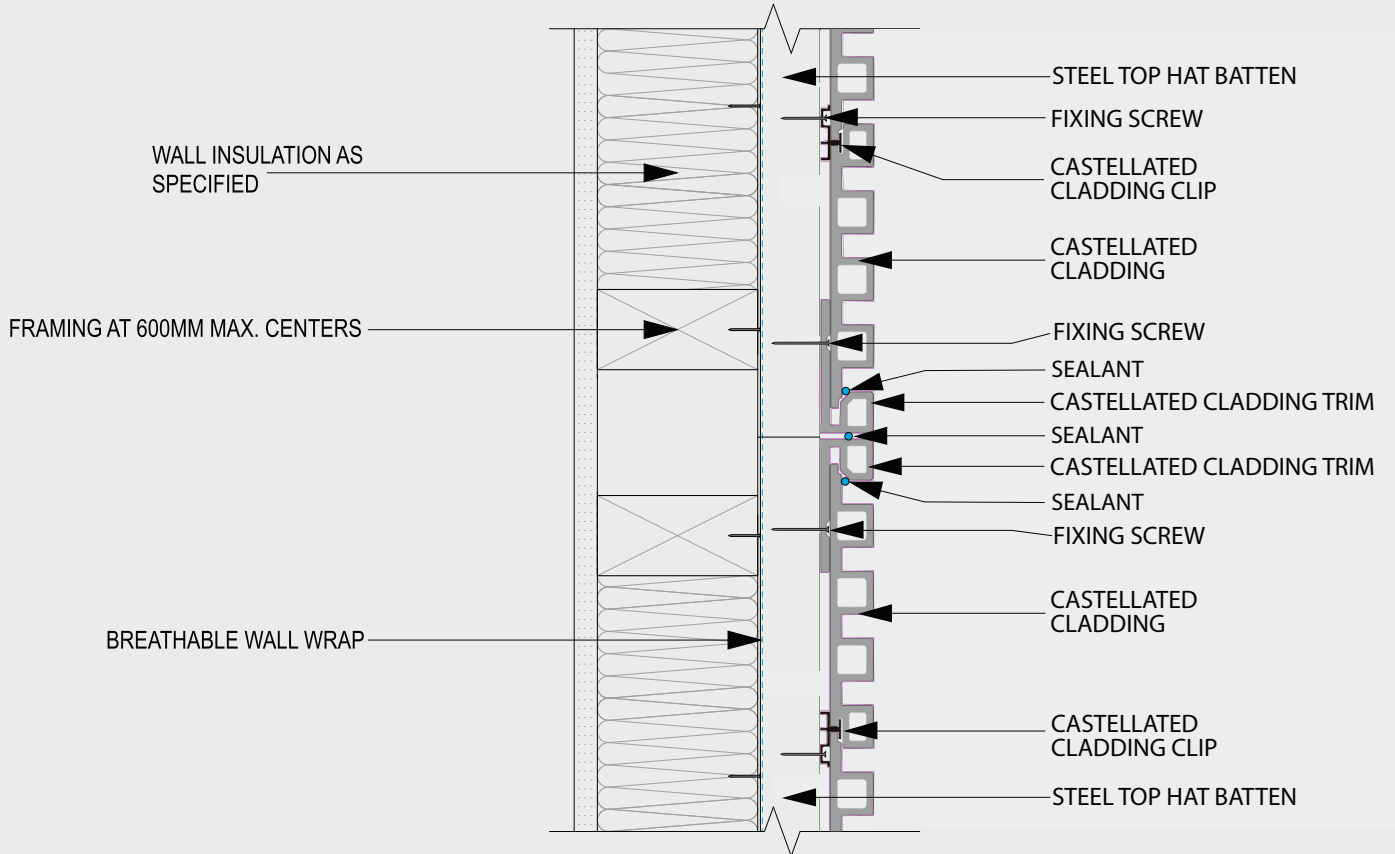
CASTELLATED WIDE 195
 Note: follow the same installation steps



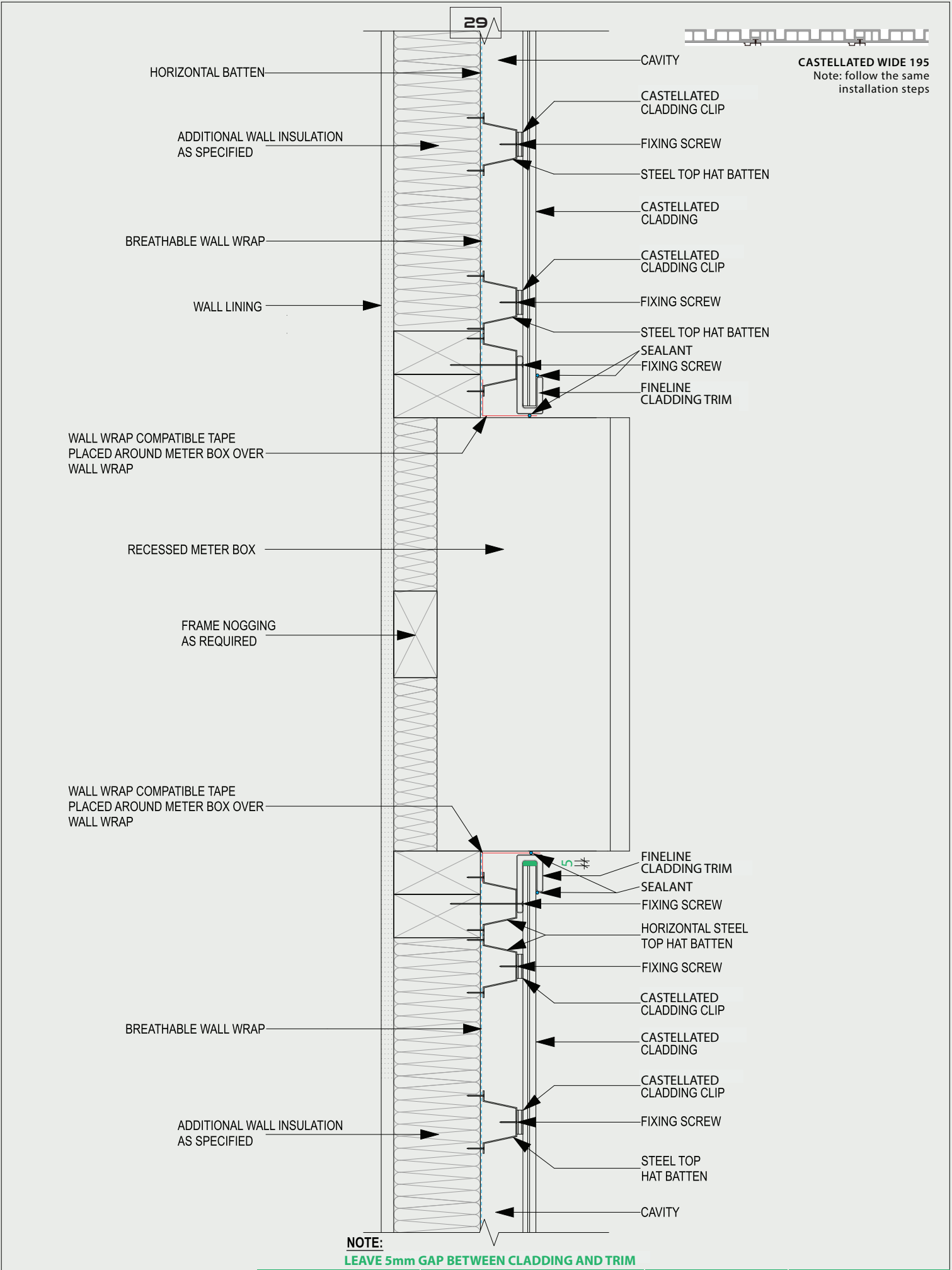
NOTE:
 LEAVE 5mm GAP BETWEEN CLADDING AND TRIM

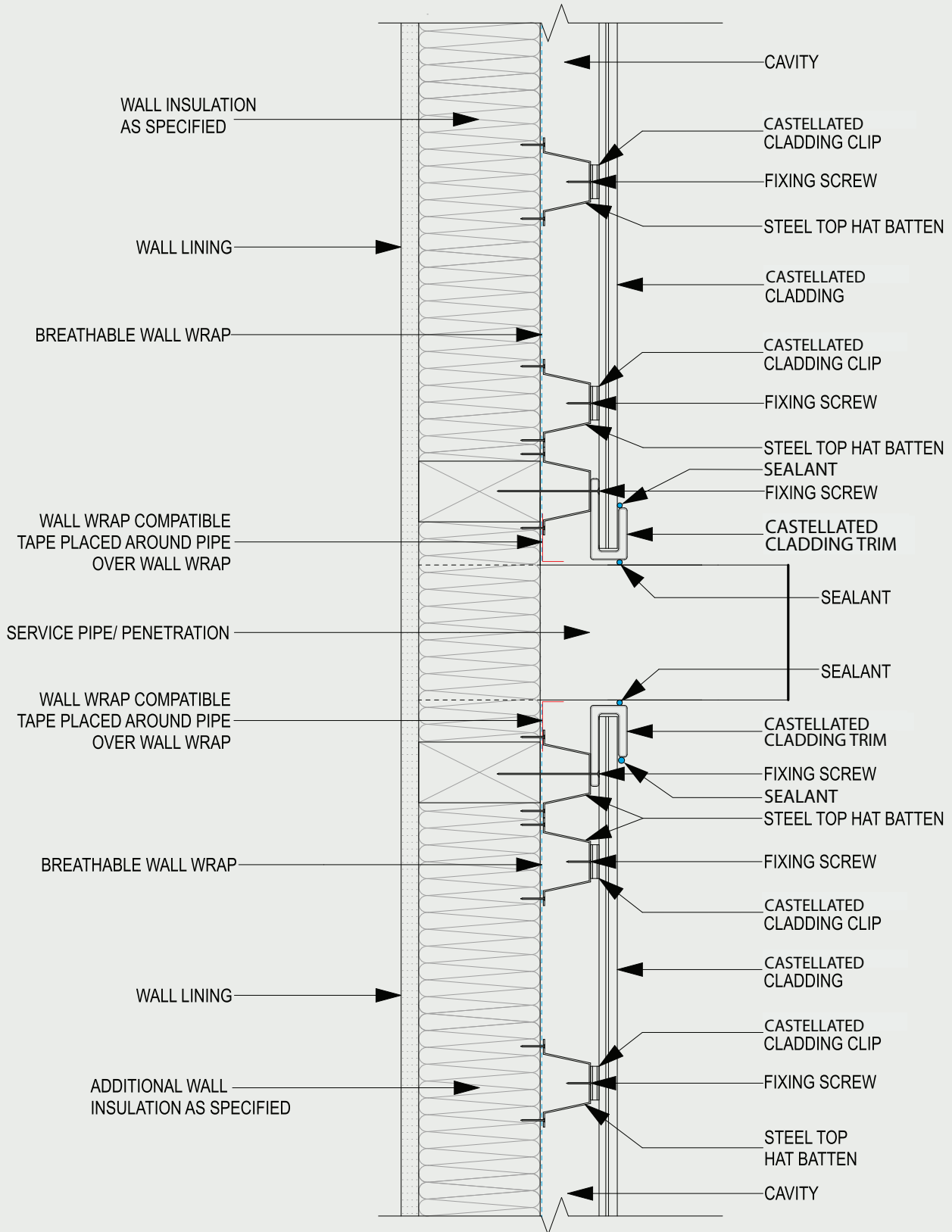


CASTELLATED WIDE 195
 Note: follow the same installation steps



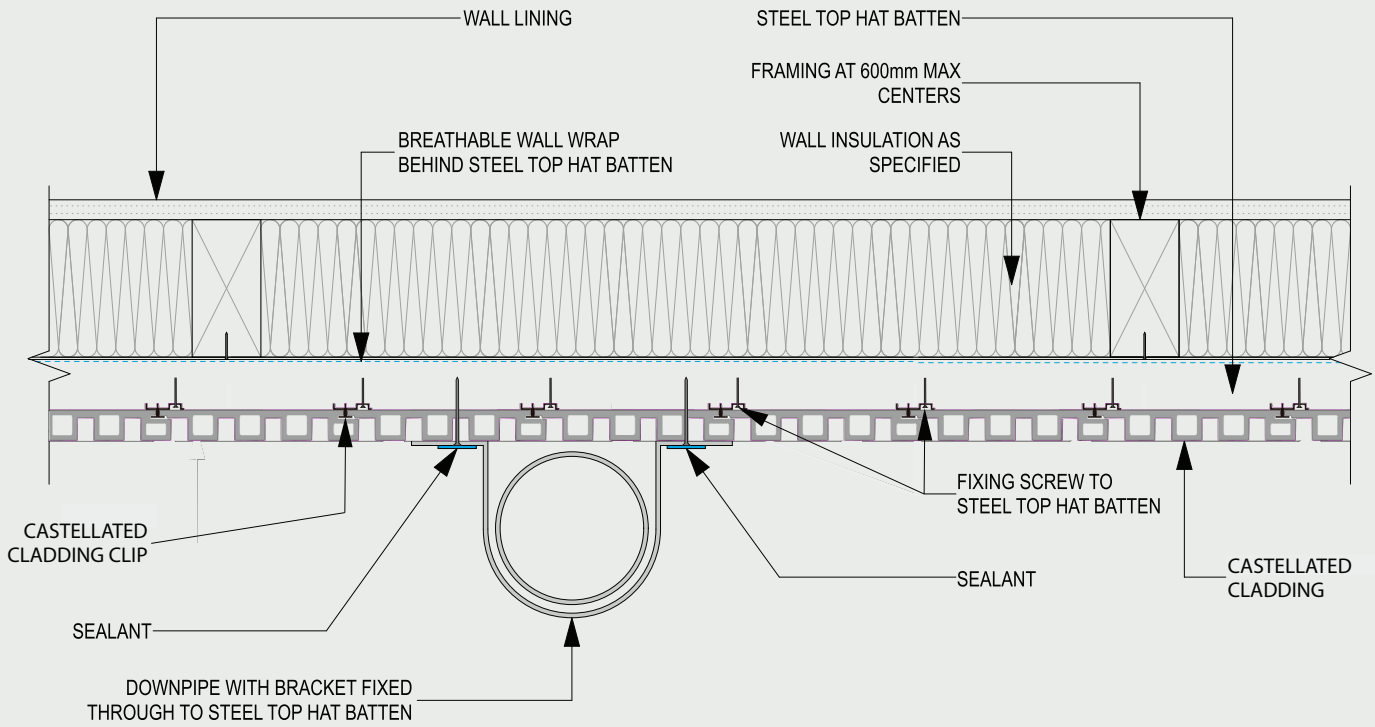
NOTE:
 LEAVE 5mm GAP BETWEEN CASTELLATED 160 AND TRIM





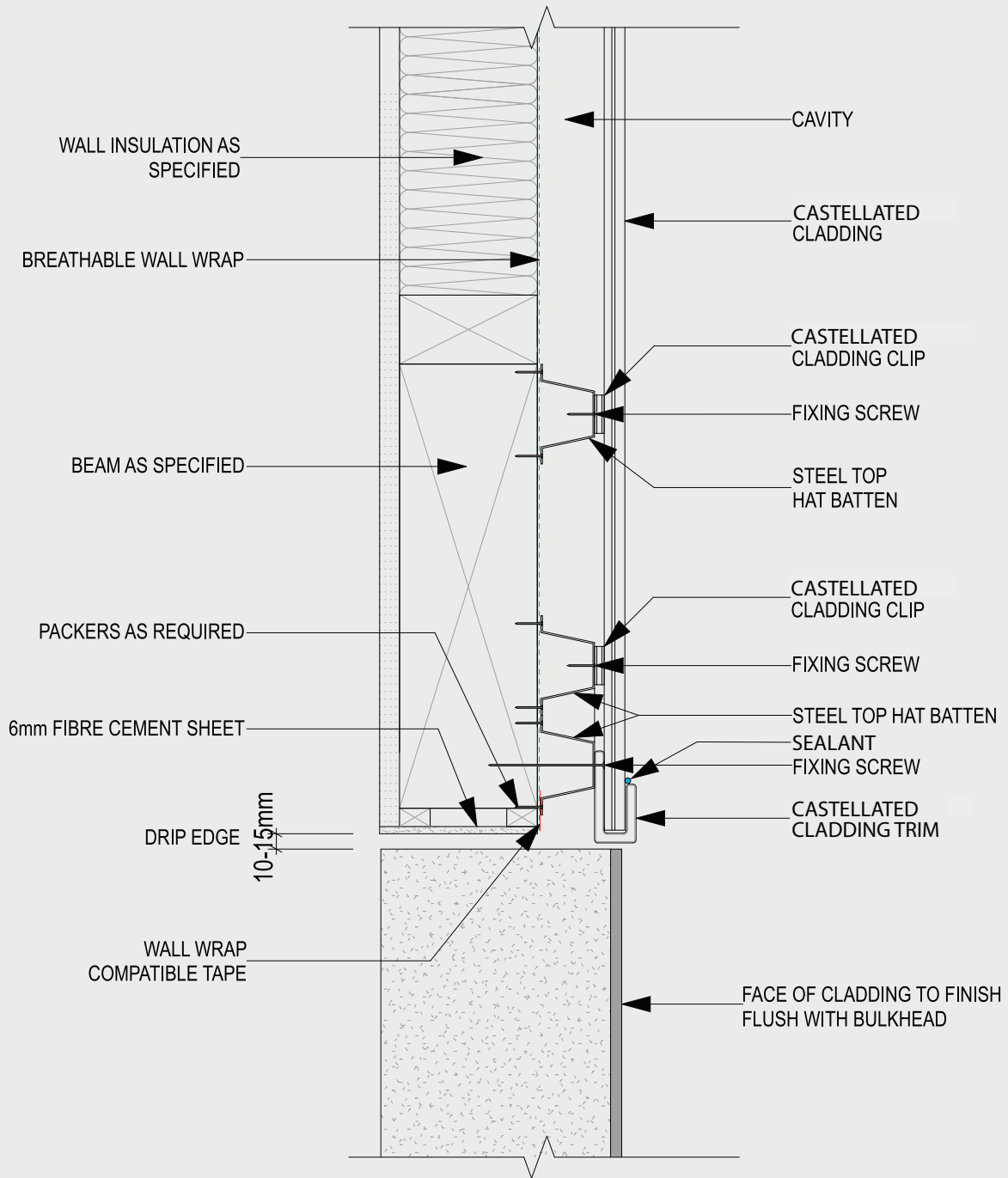


CASTELLATED WIDE 195
 Note: follow the same installation steps



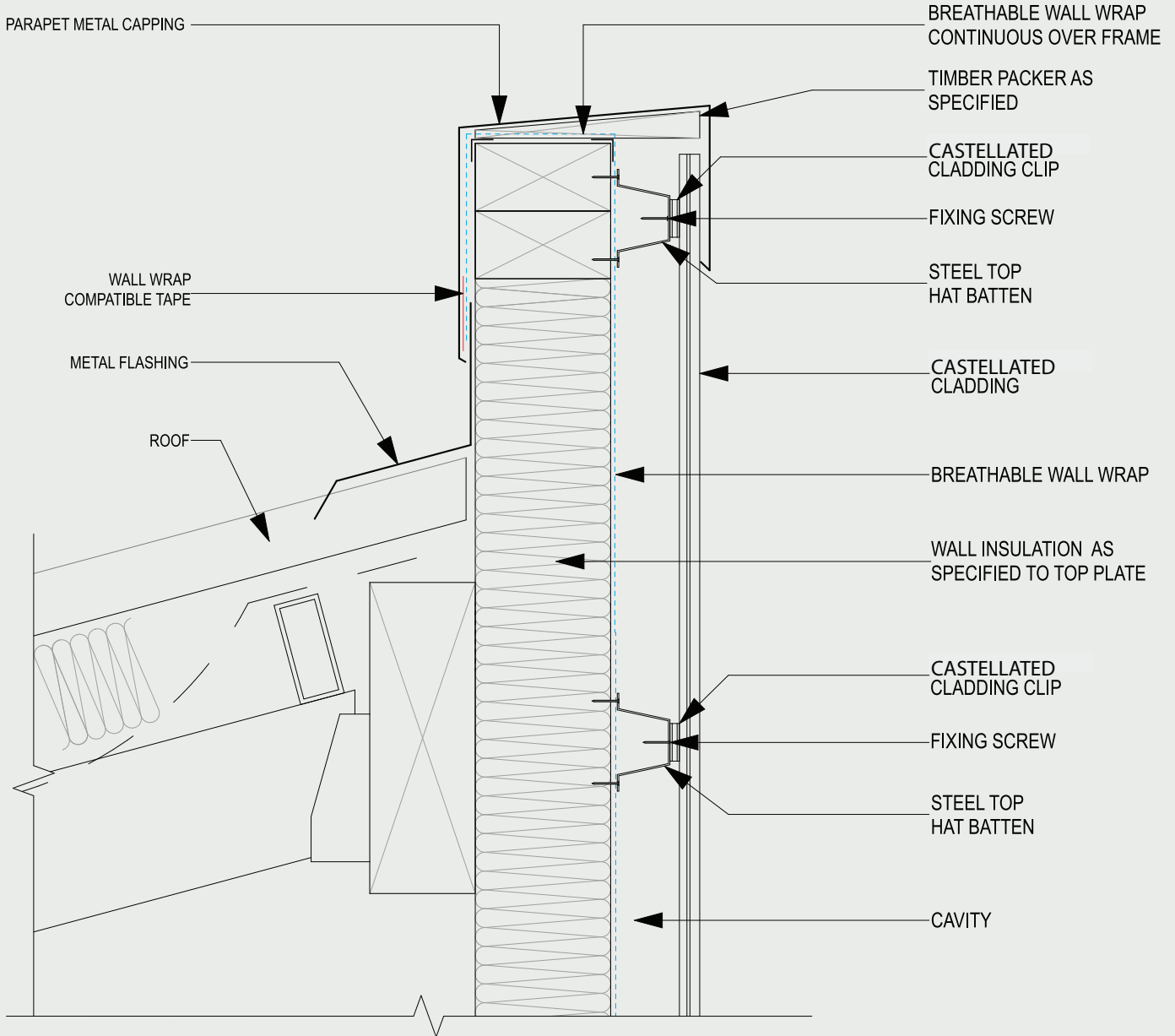


CASTELLATED WIDE 195
 Note: follow the same installation steps



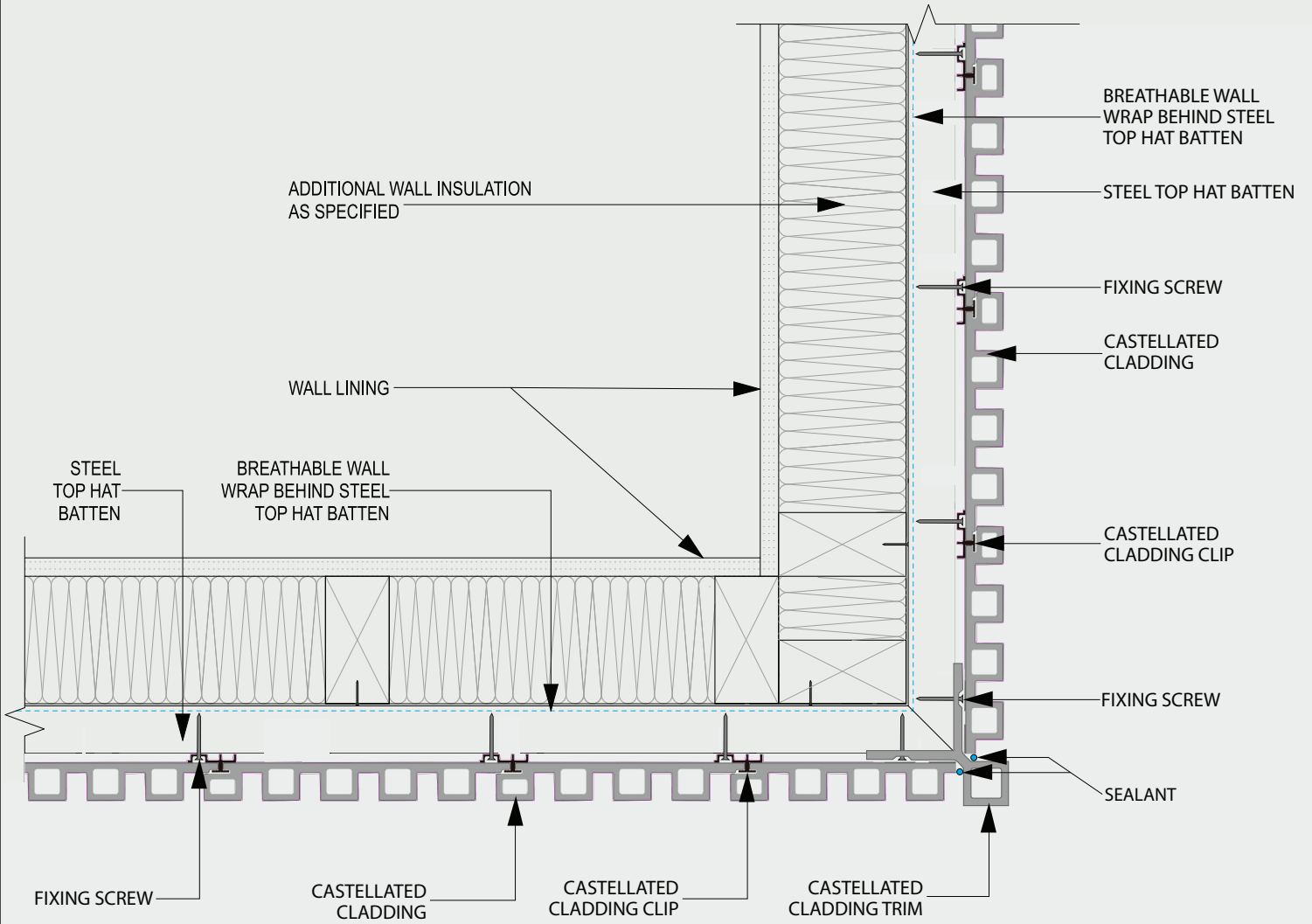


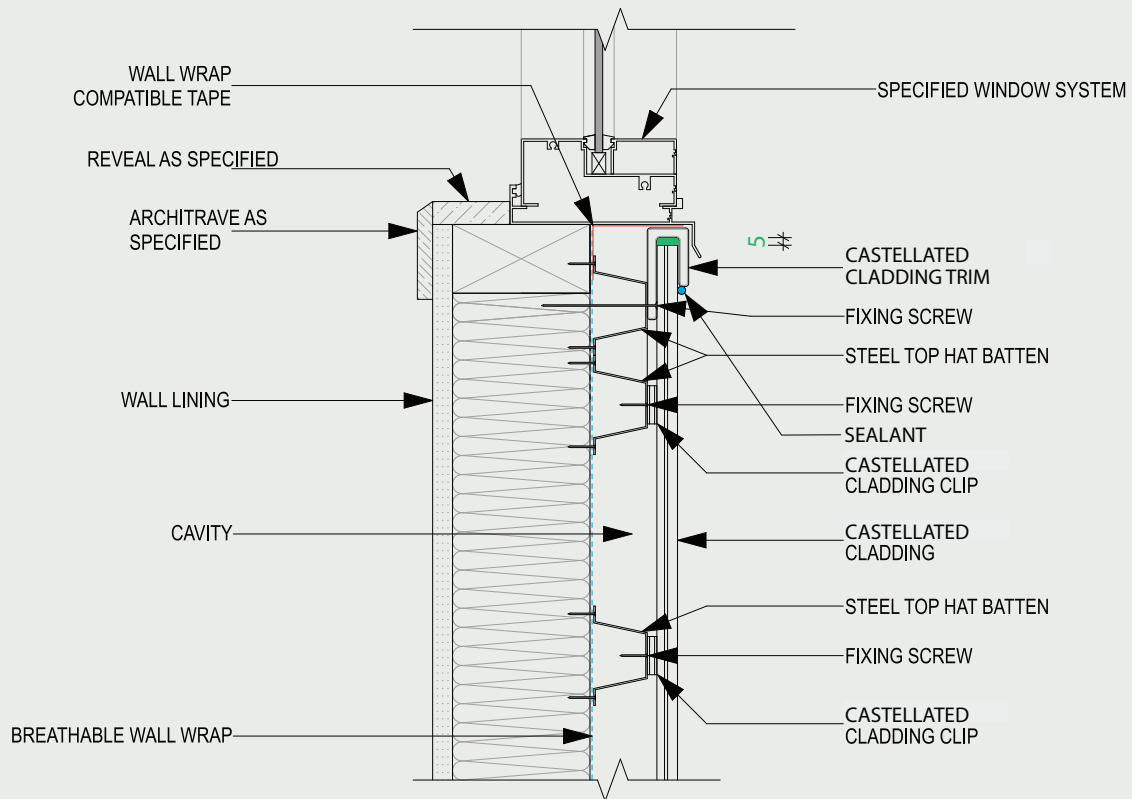
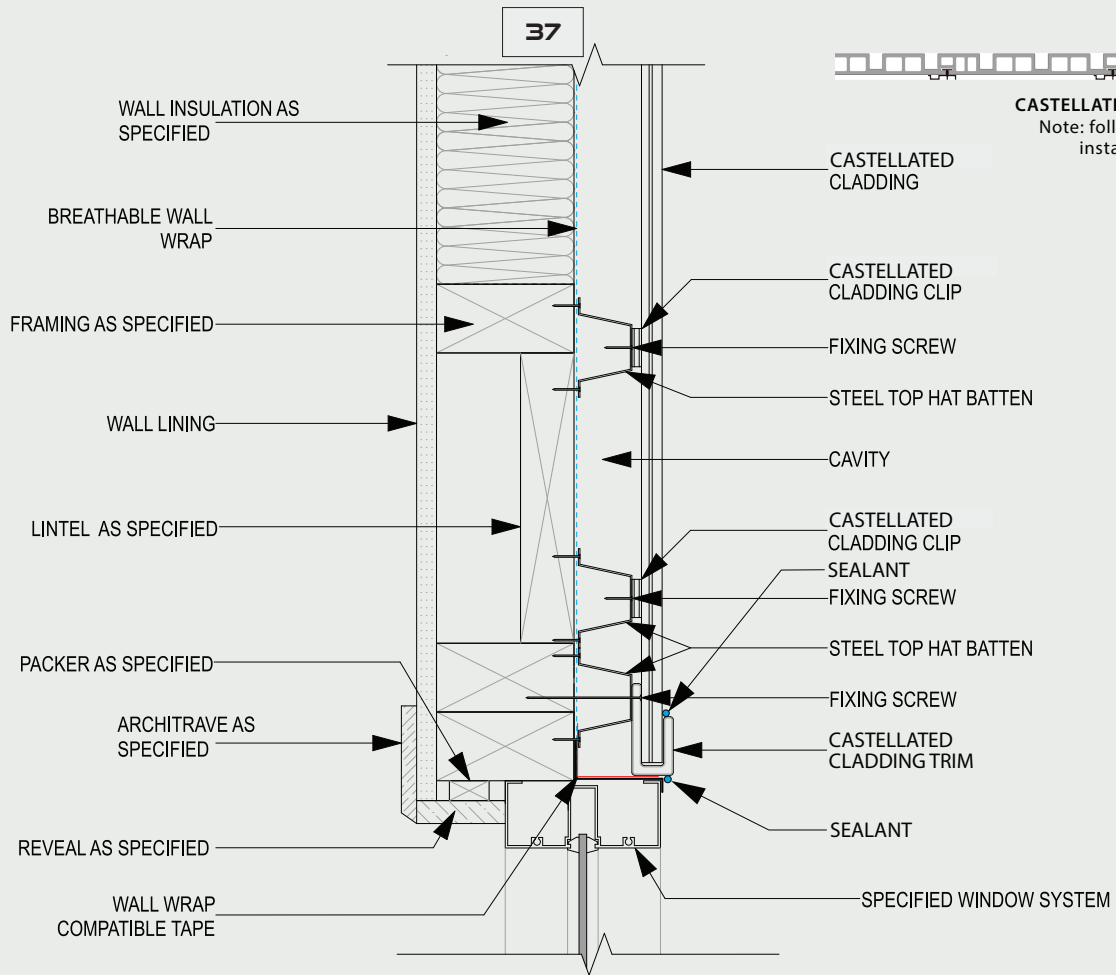
CASTELLATED WIDE 195
 Note: follow the same installation steps





CASTELLATED WIDE 195
 Note: follow the same installation steps



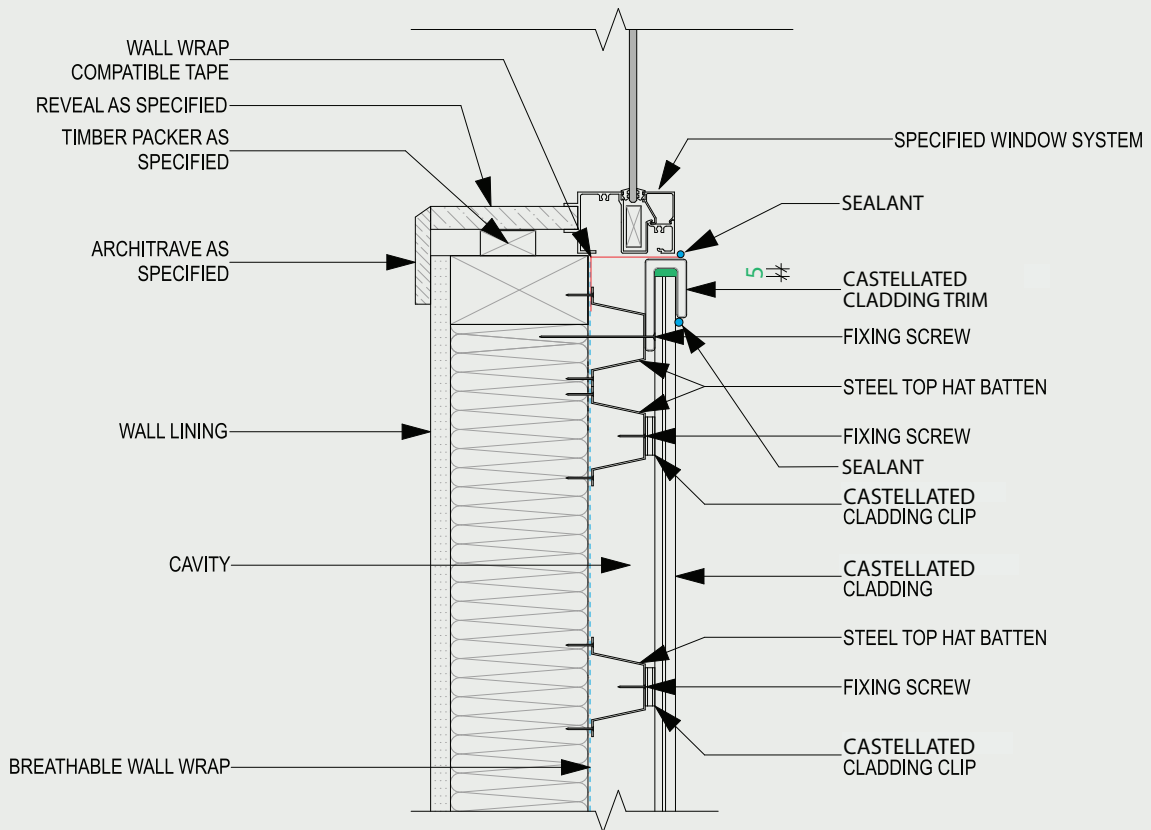
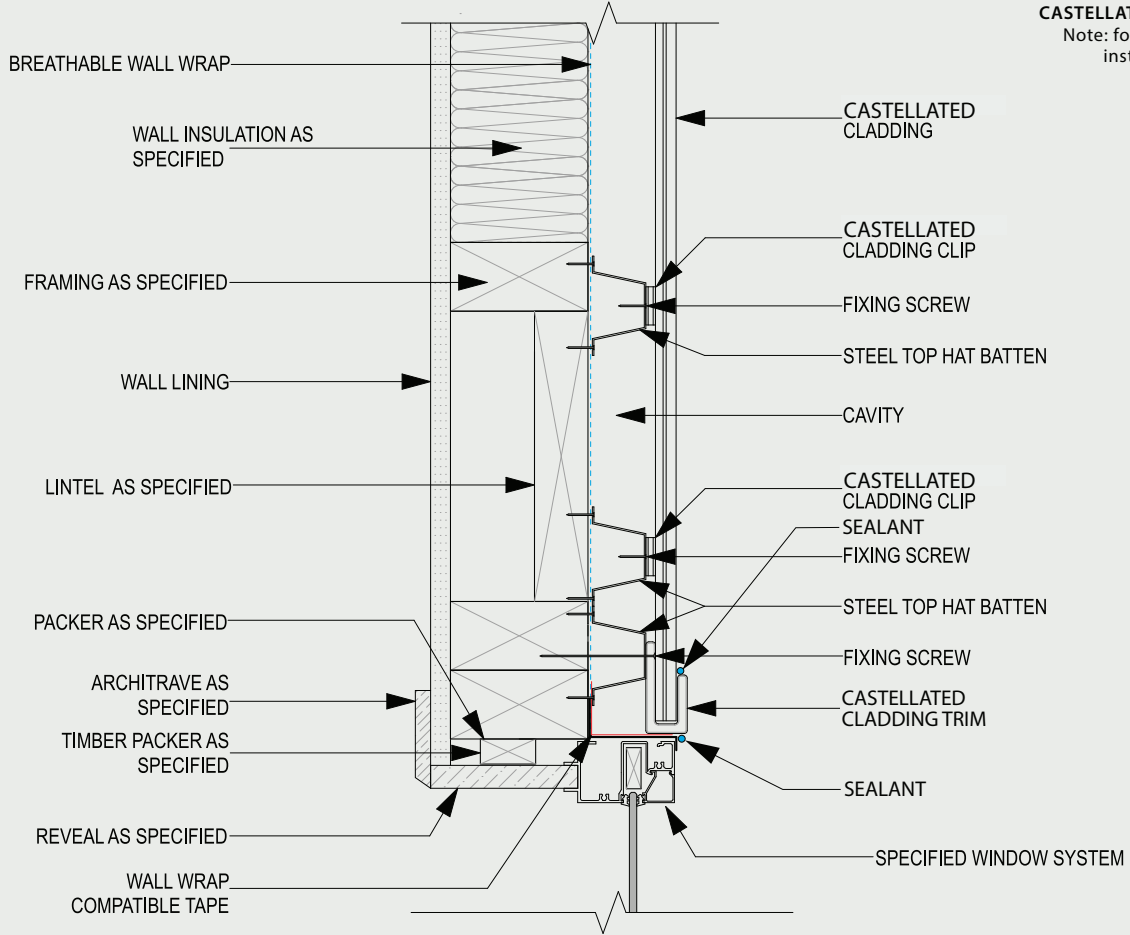


NOTE:
 LEAVE 5mm GAP BETWEEN CLADDING AND TRIM



CASTELLATED WIDE 195

Note: follow the same installation steps

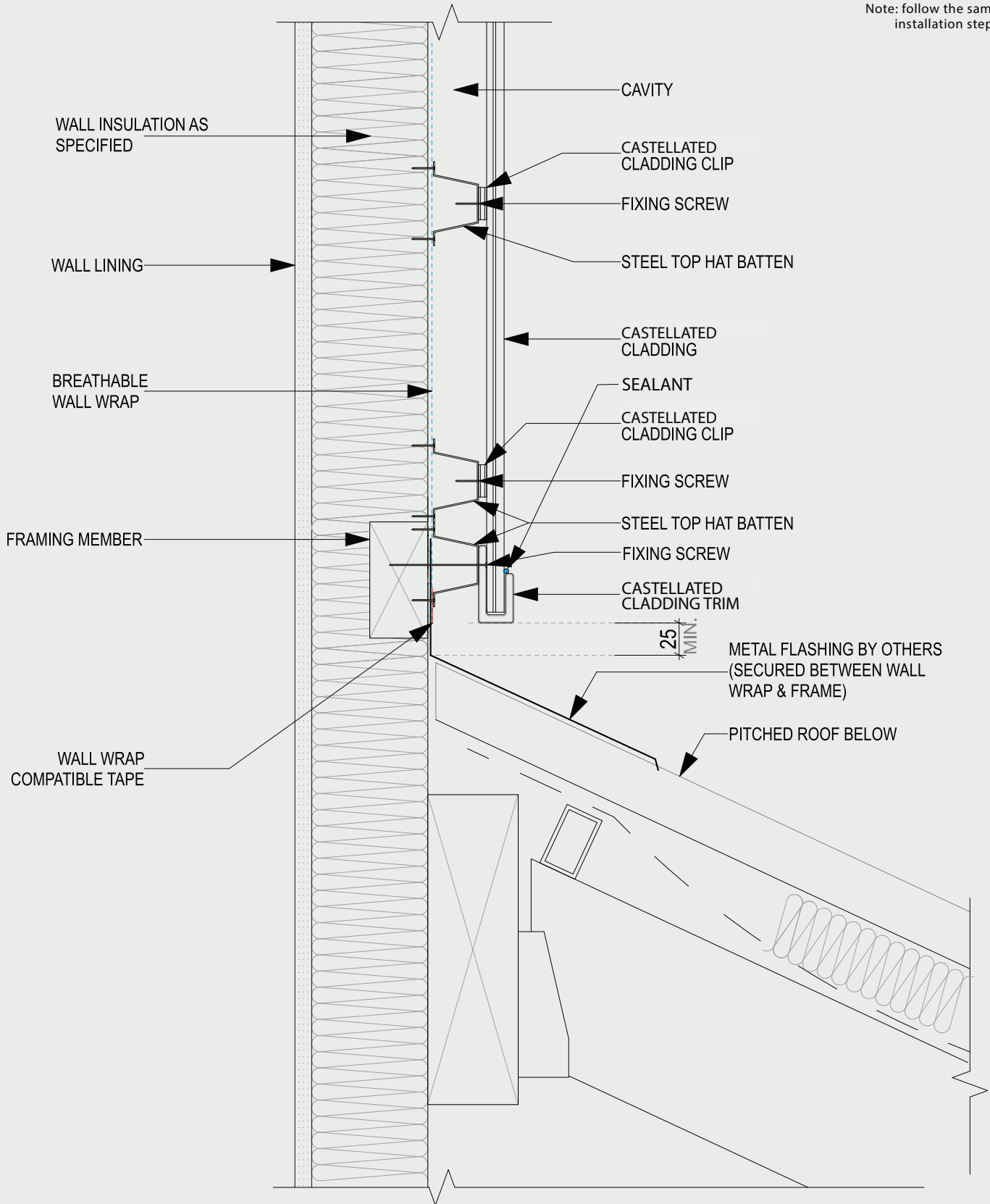


NOTE:
LEAVE 5mm GAP BETWEEN CLADDING AND TRIM



CASTELLATED WIDE 195

Note: follow the same installation steps





CASTELLATED WIDE 195
 Note: follow the same installation steps

