

# ENGINEERING DRAWING FOR PAVEEZZI RESSISTO COLLECTIONS

The Document uses **Lightissimo 202** as reference.  
All Lightissimo, Simmetrico and Shiplap profiles  
can be used the same way.



LIGHTISSIMO 202



LIGHTISSIMO 195



LIGHTISSIMO 400



SIMMETRICO 300



SIMMETRICO 200



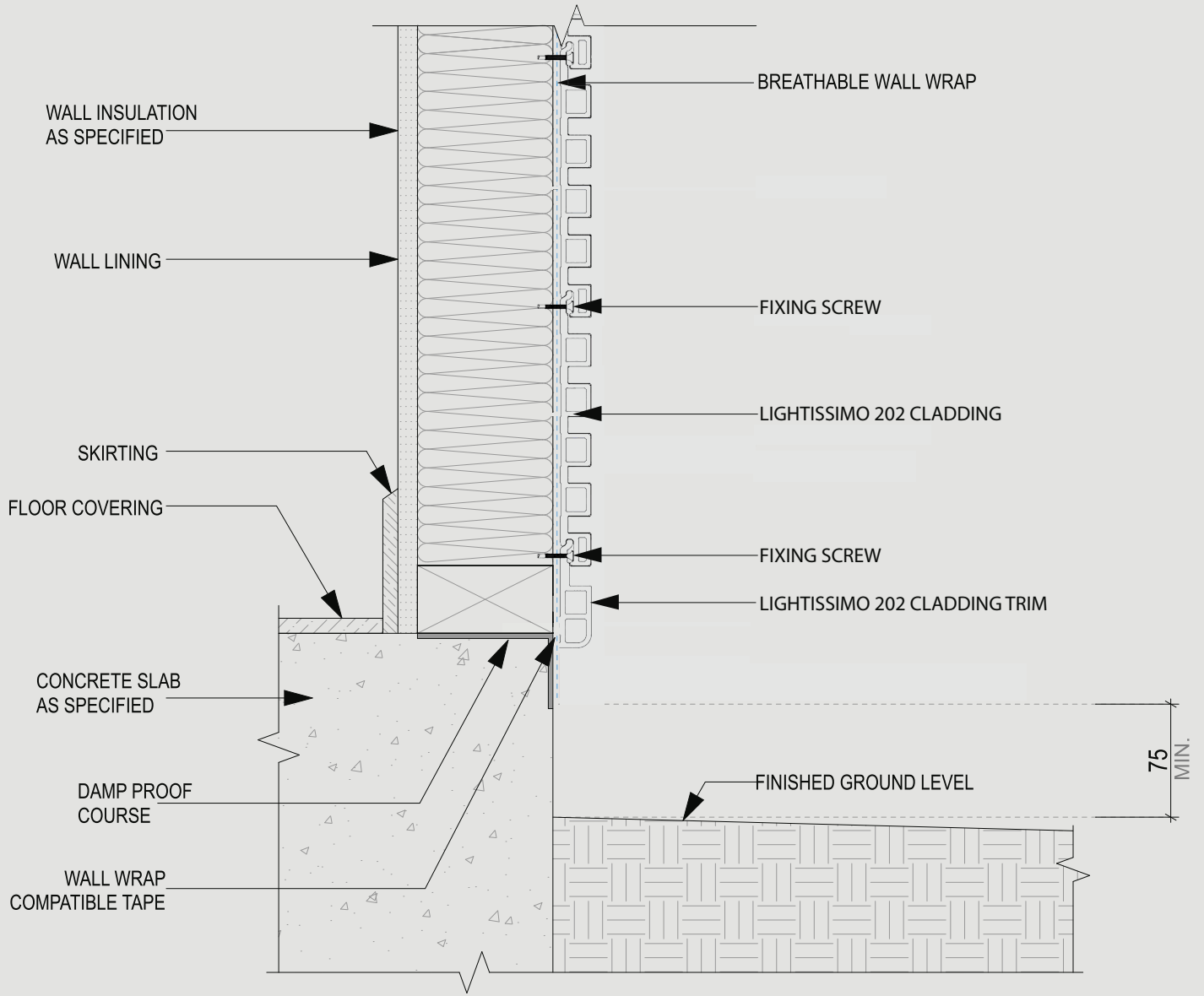
SIMMETRICO 150

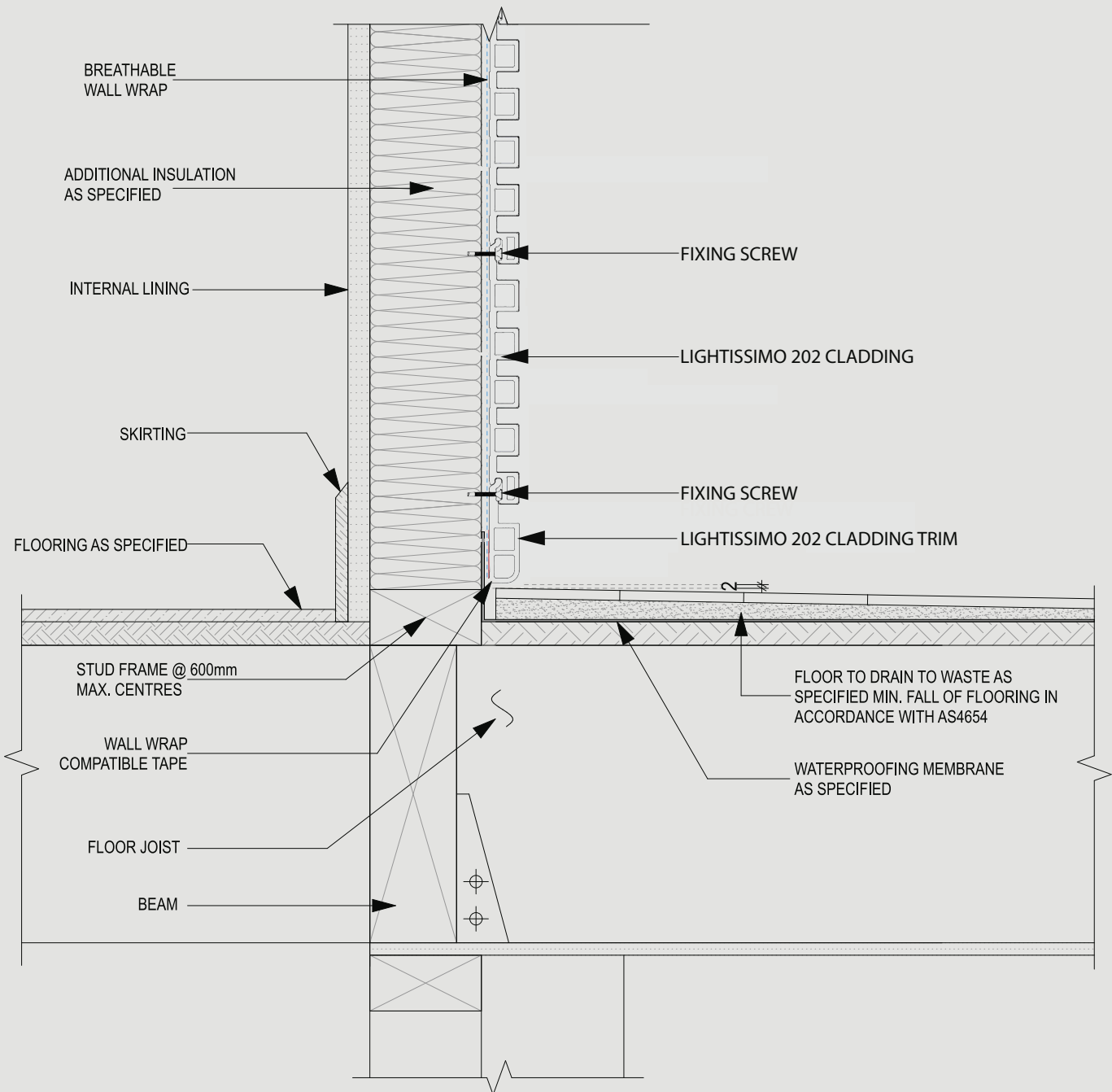


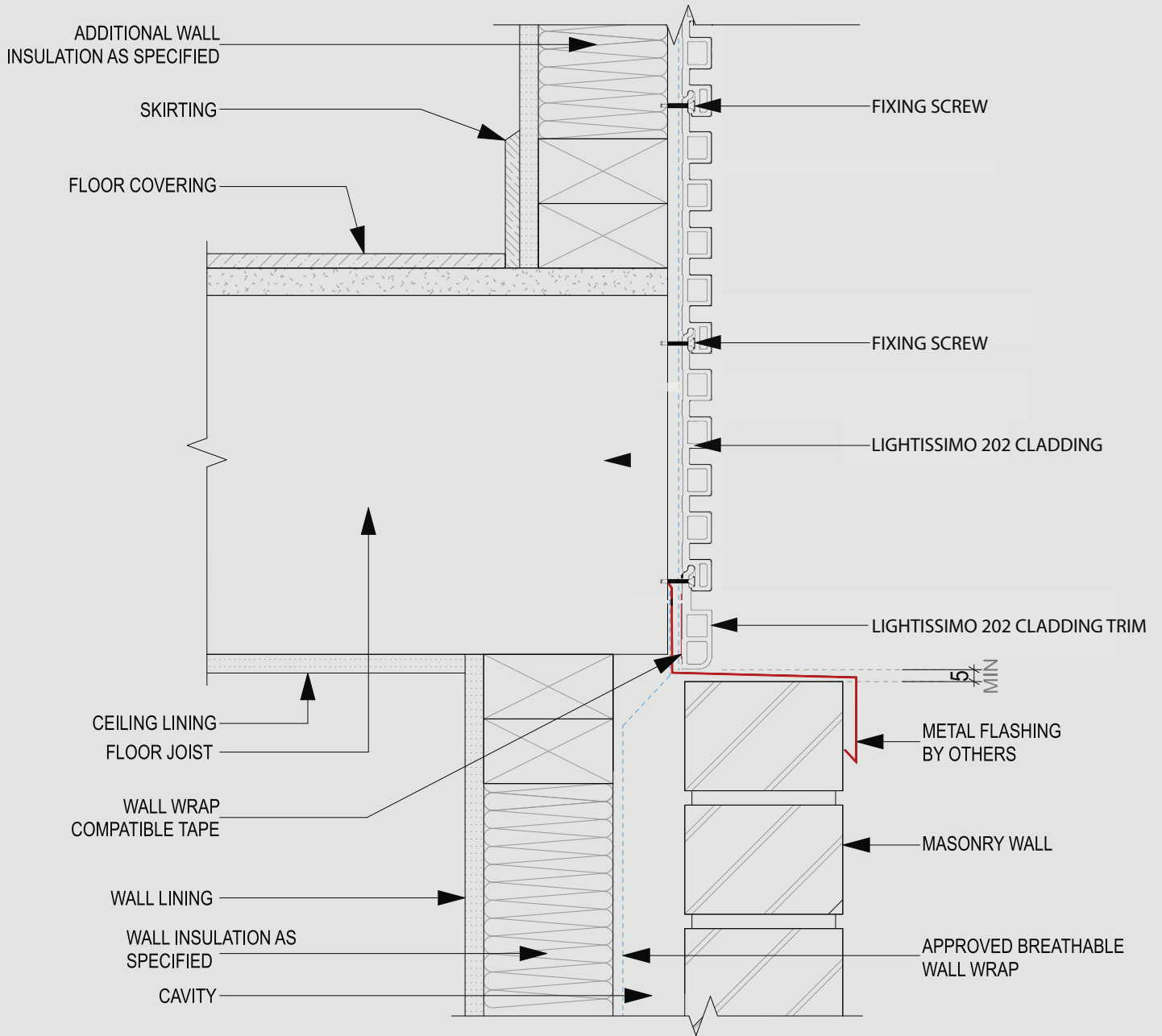
HAMPTON 300

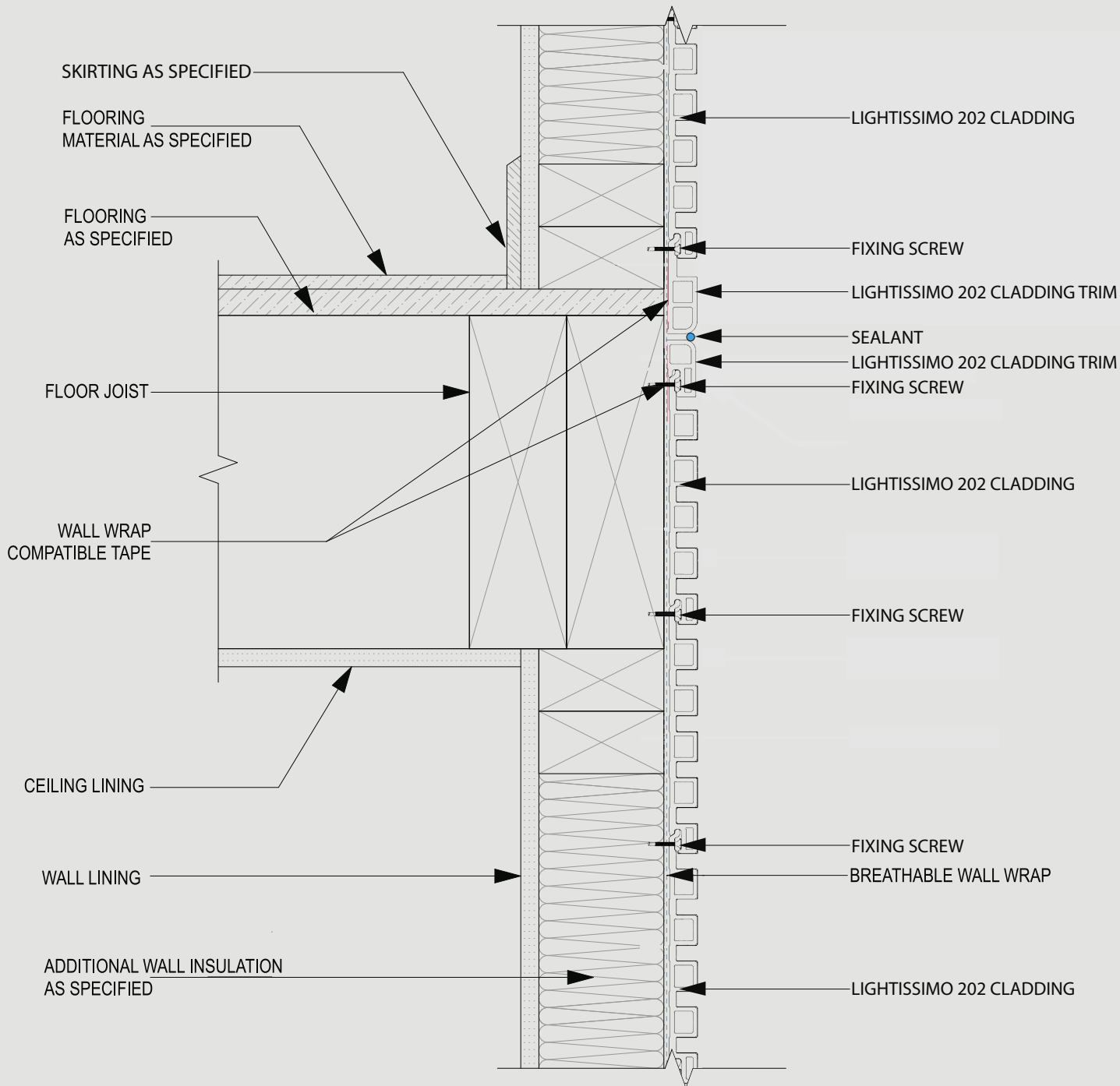


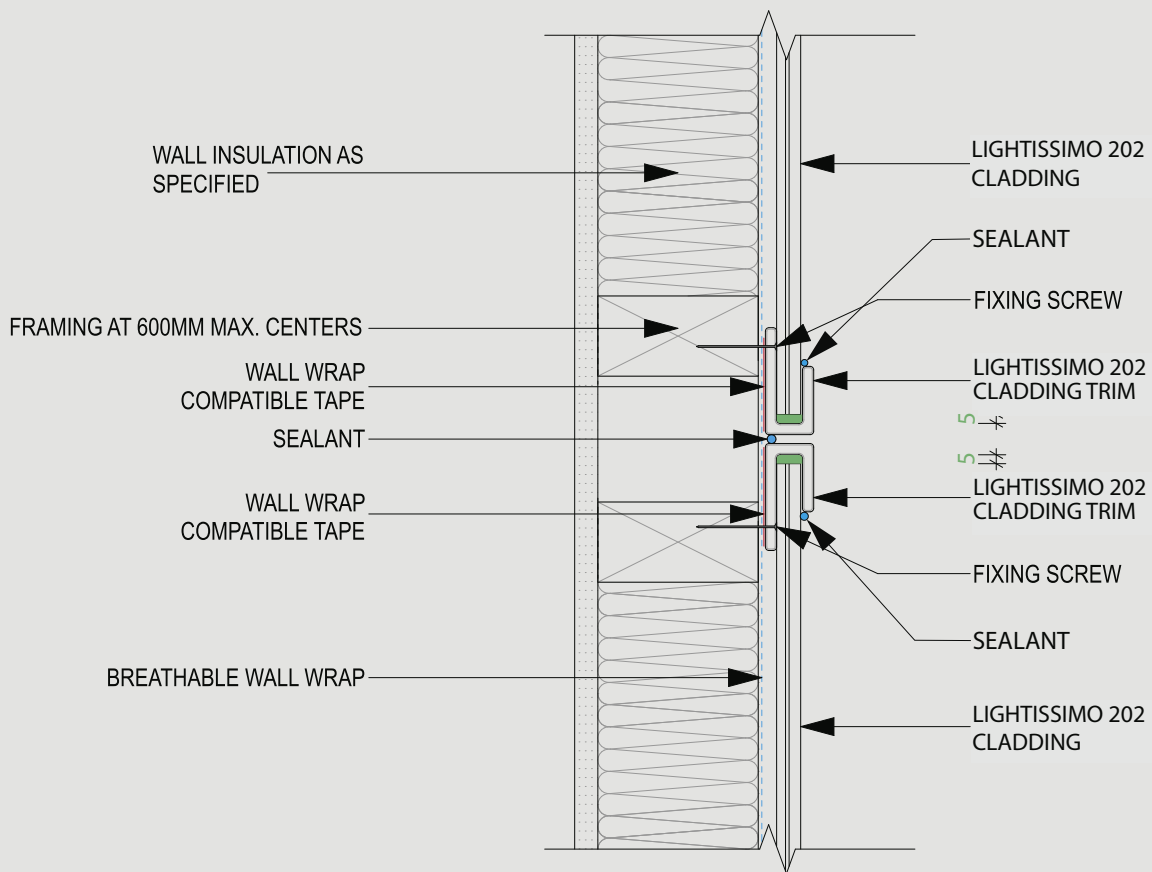
BATTEN & BOARD





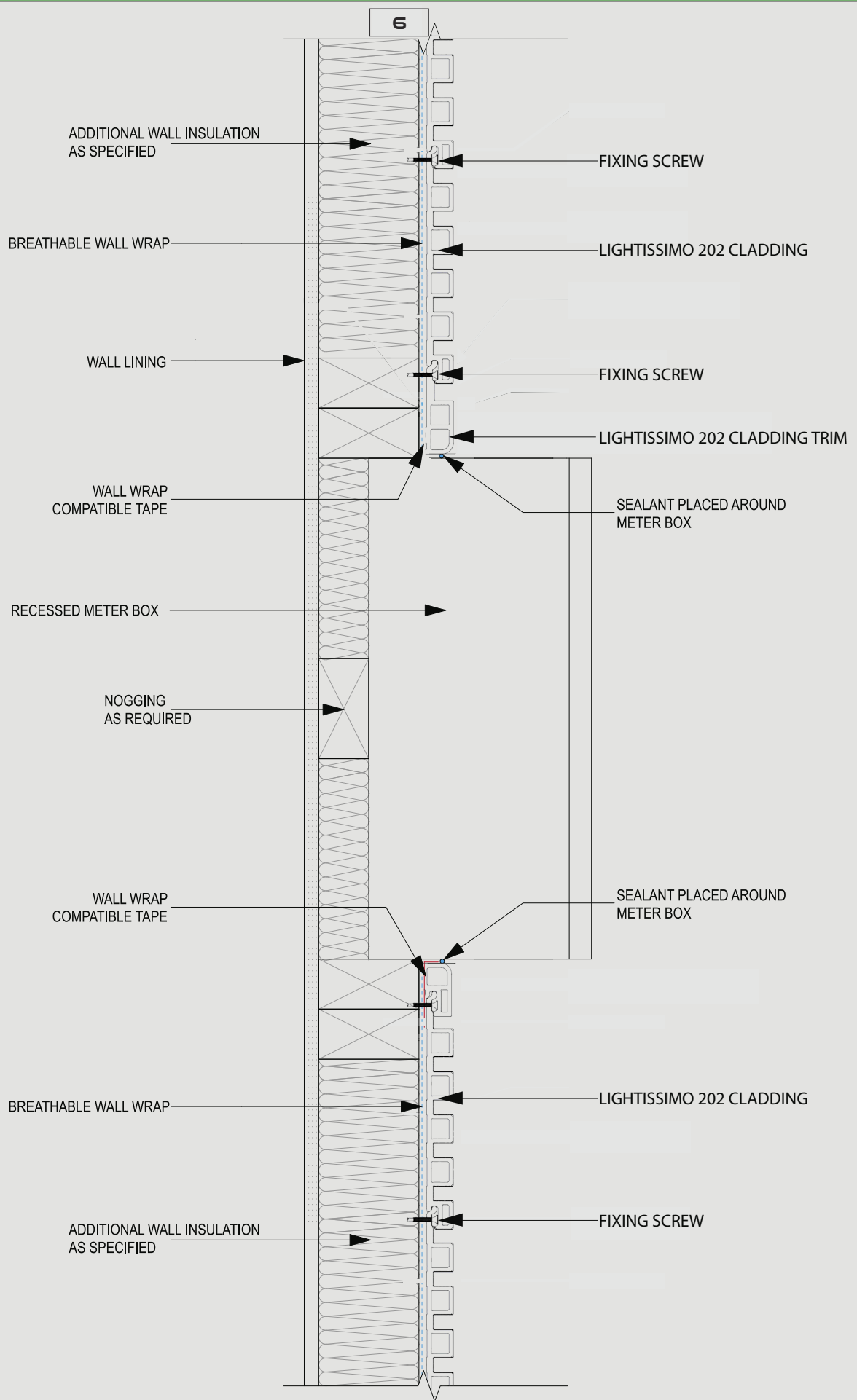


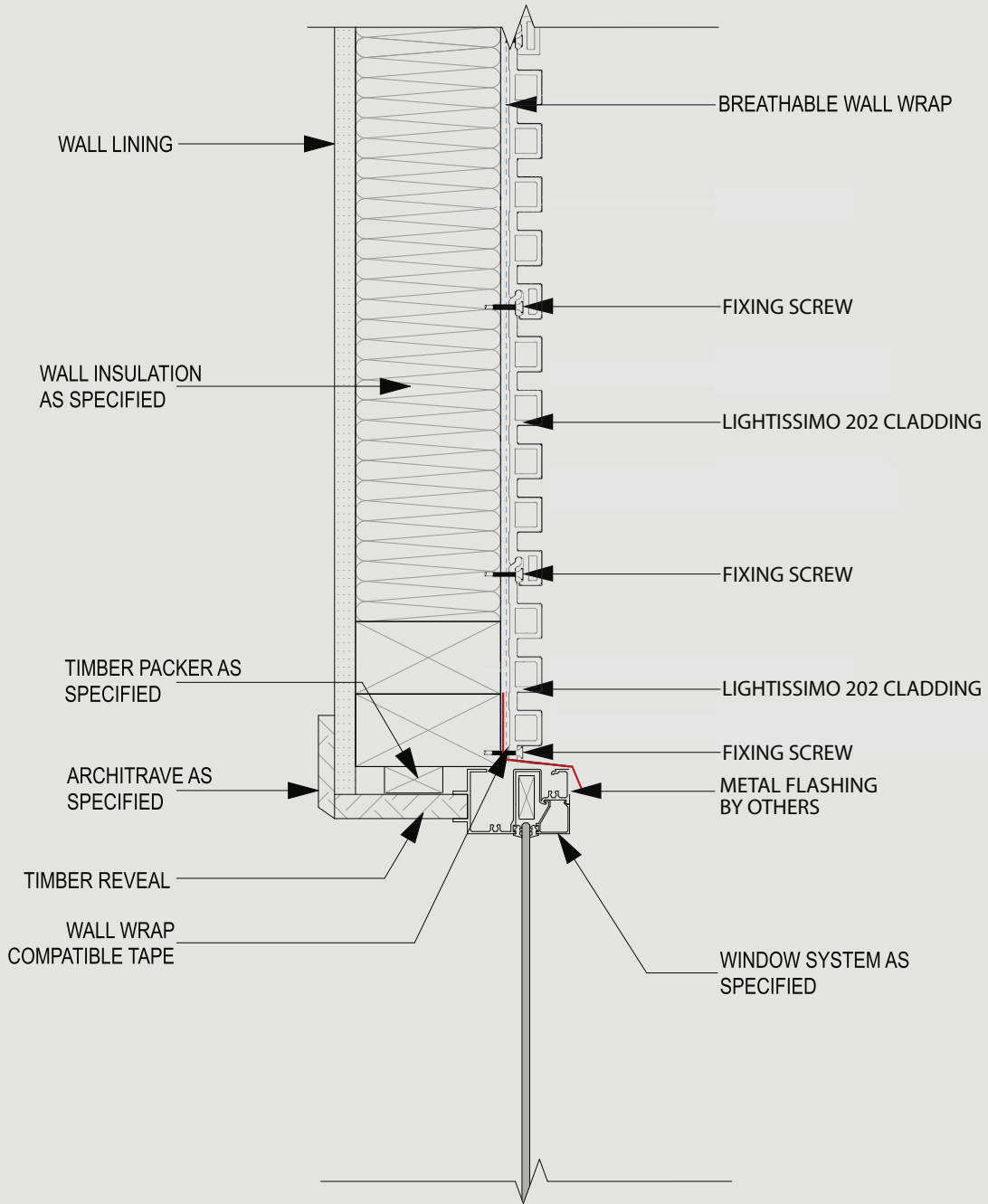


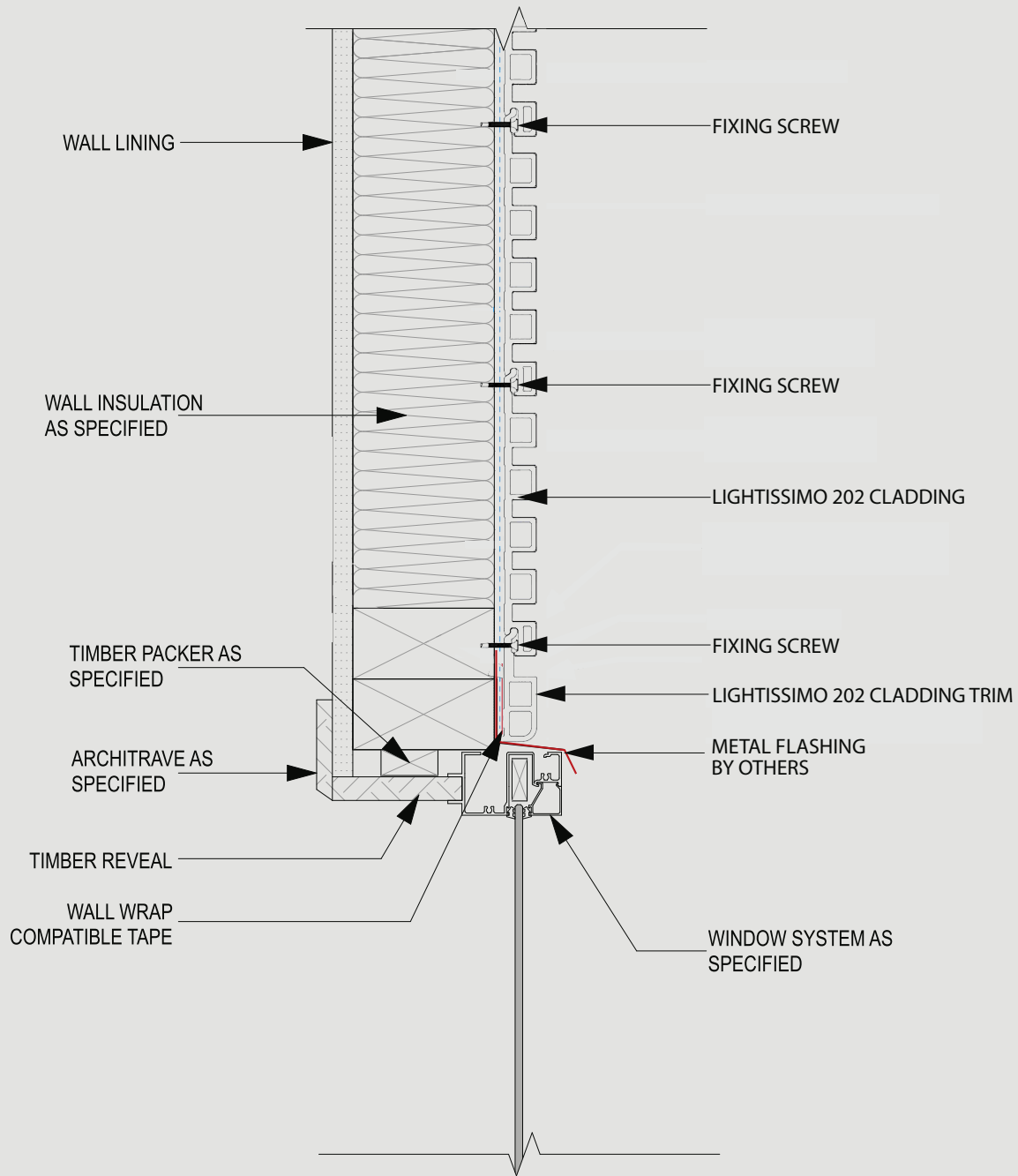


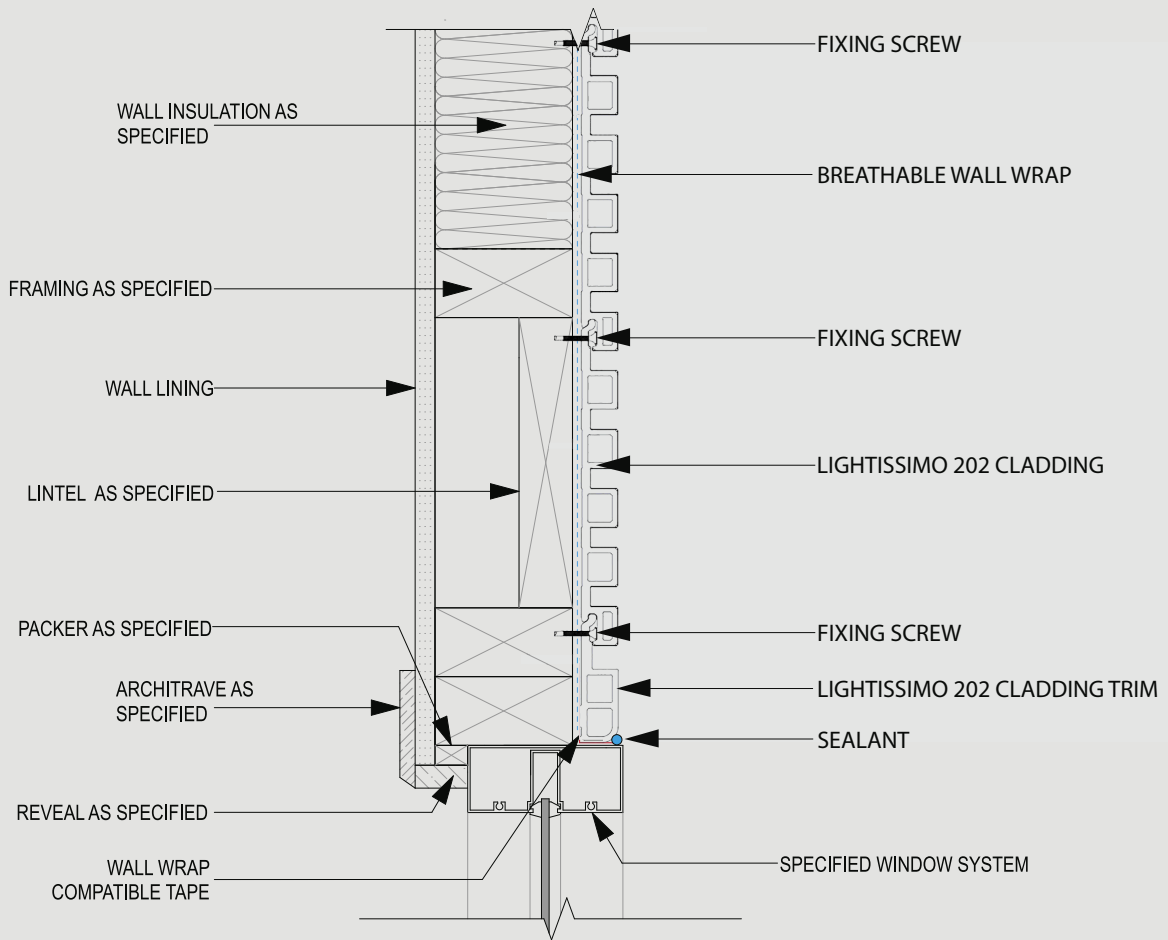
**NOTE:**

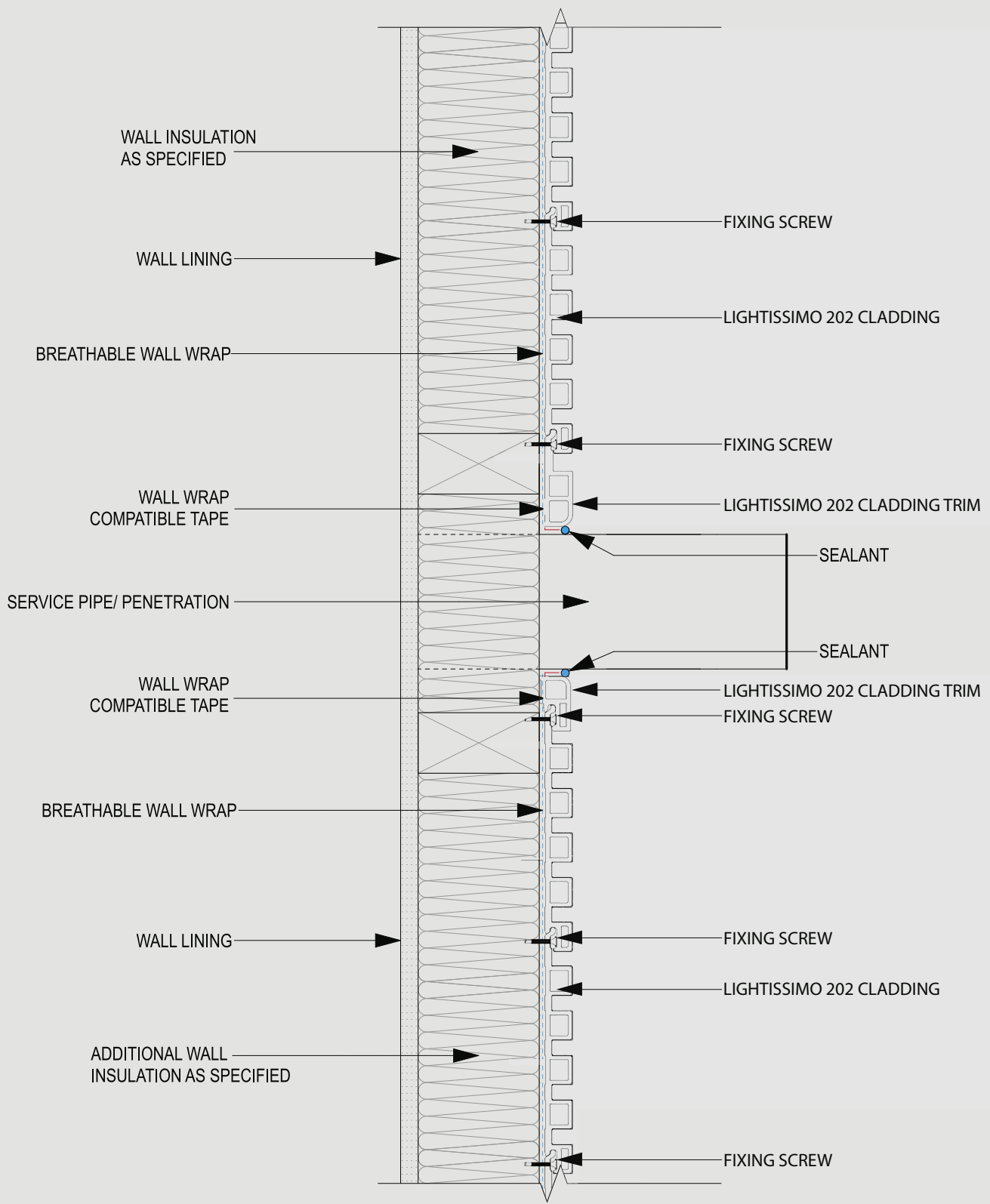
LEAVE 5mm GAP BETWEEN CLADDING AND TRIM

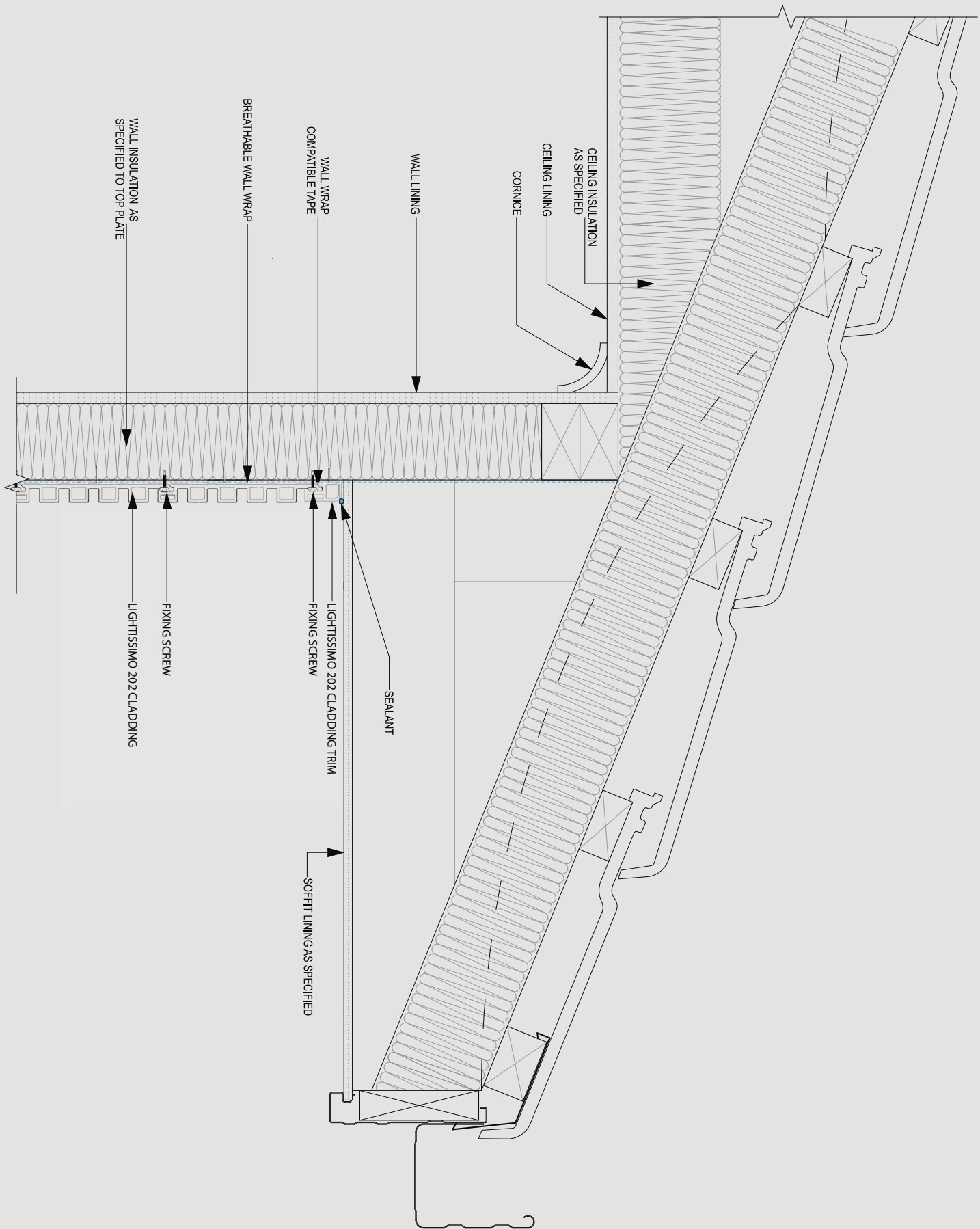


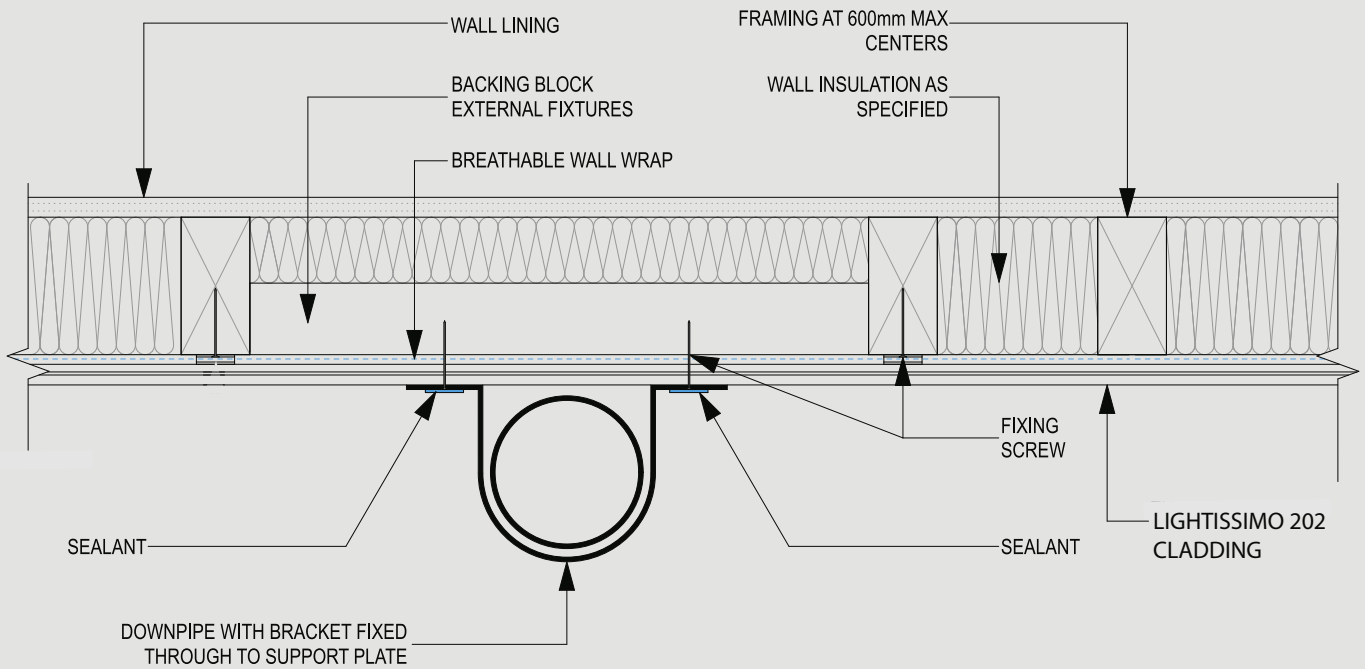


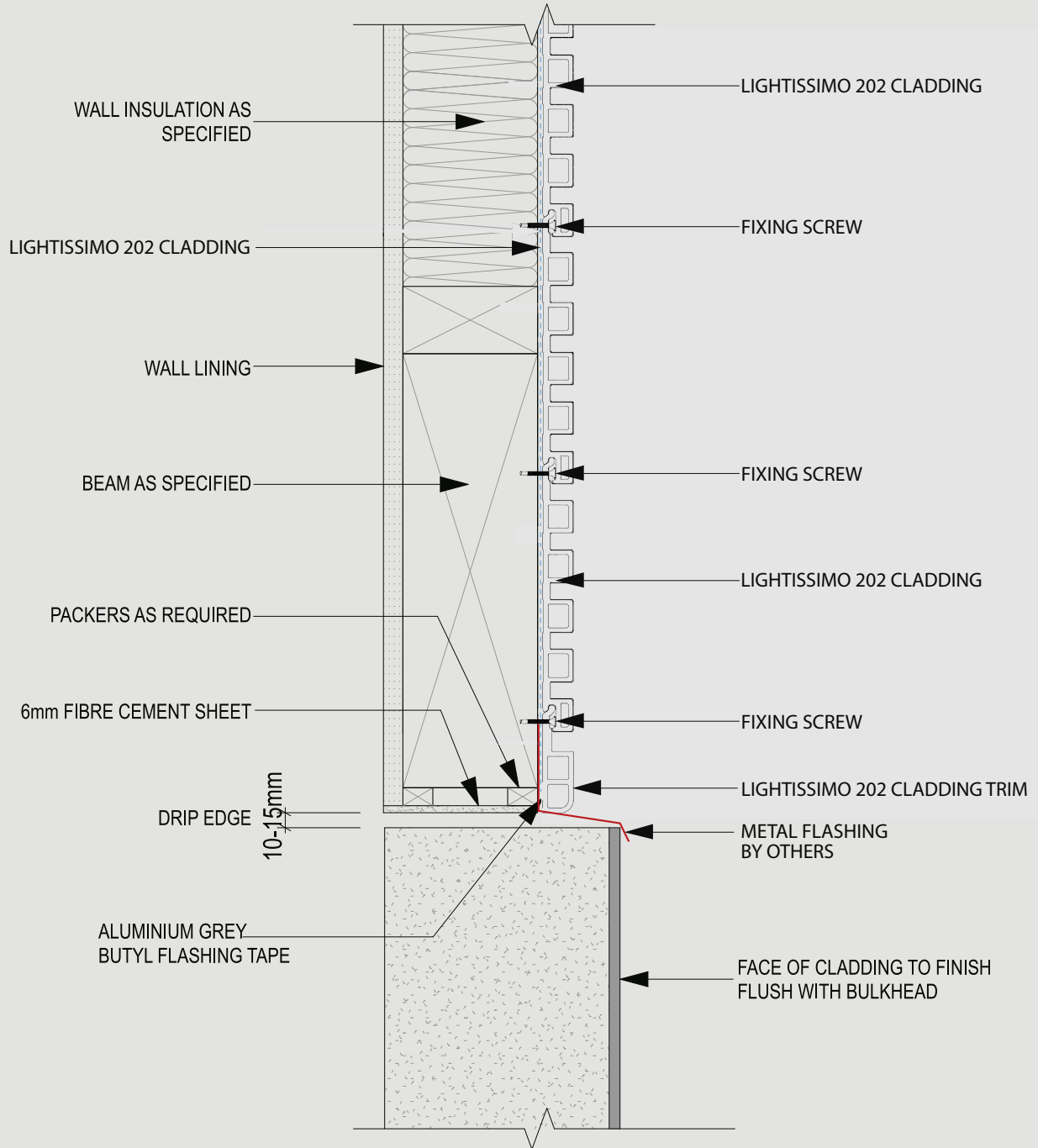


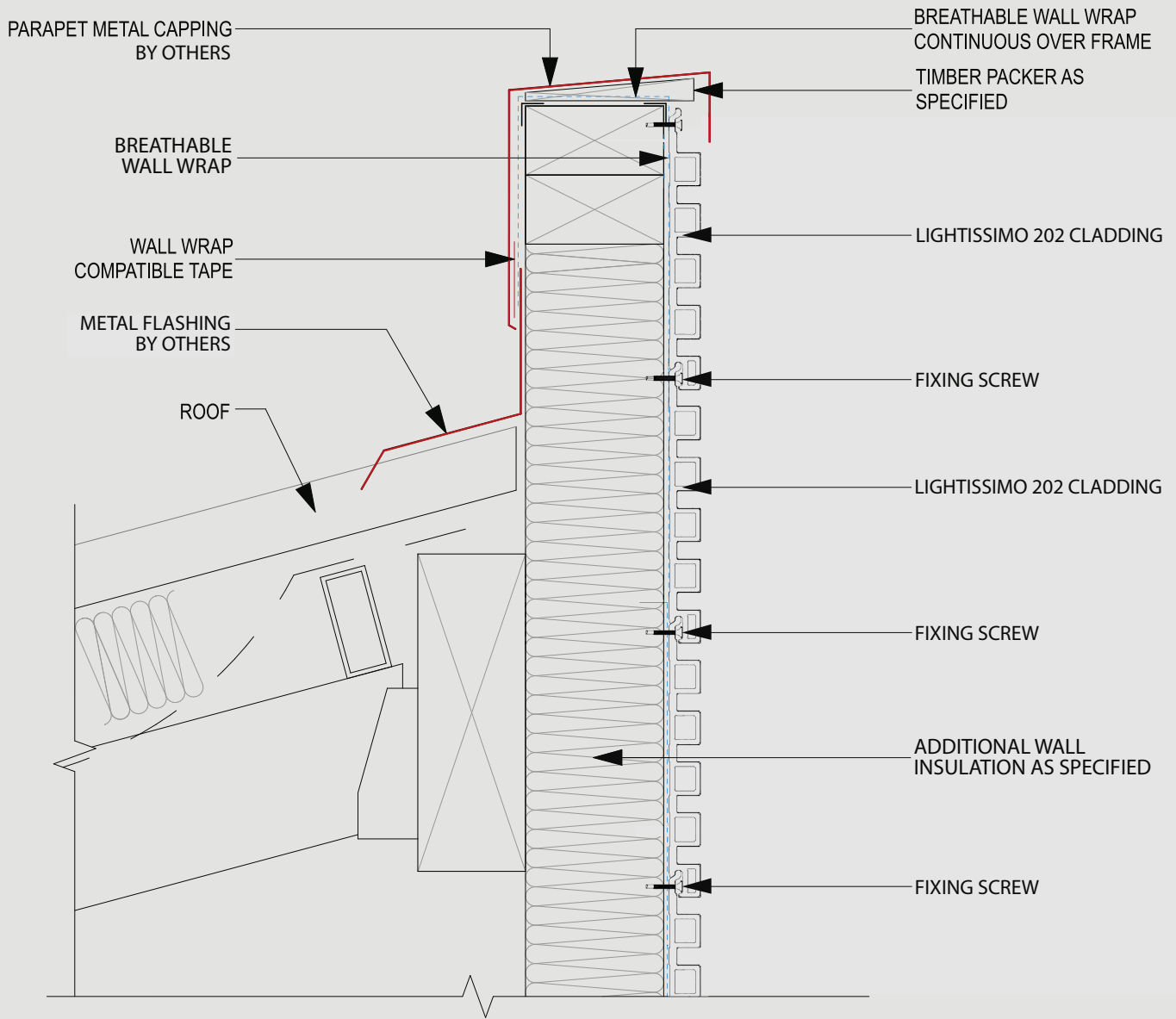


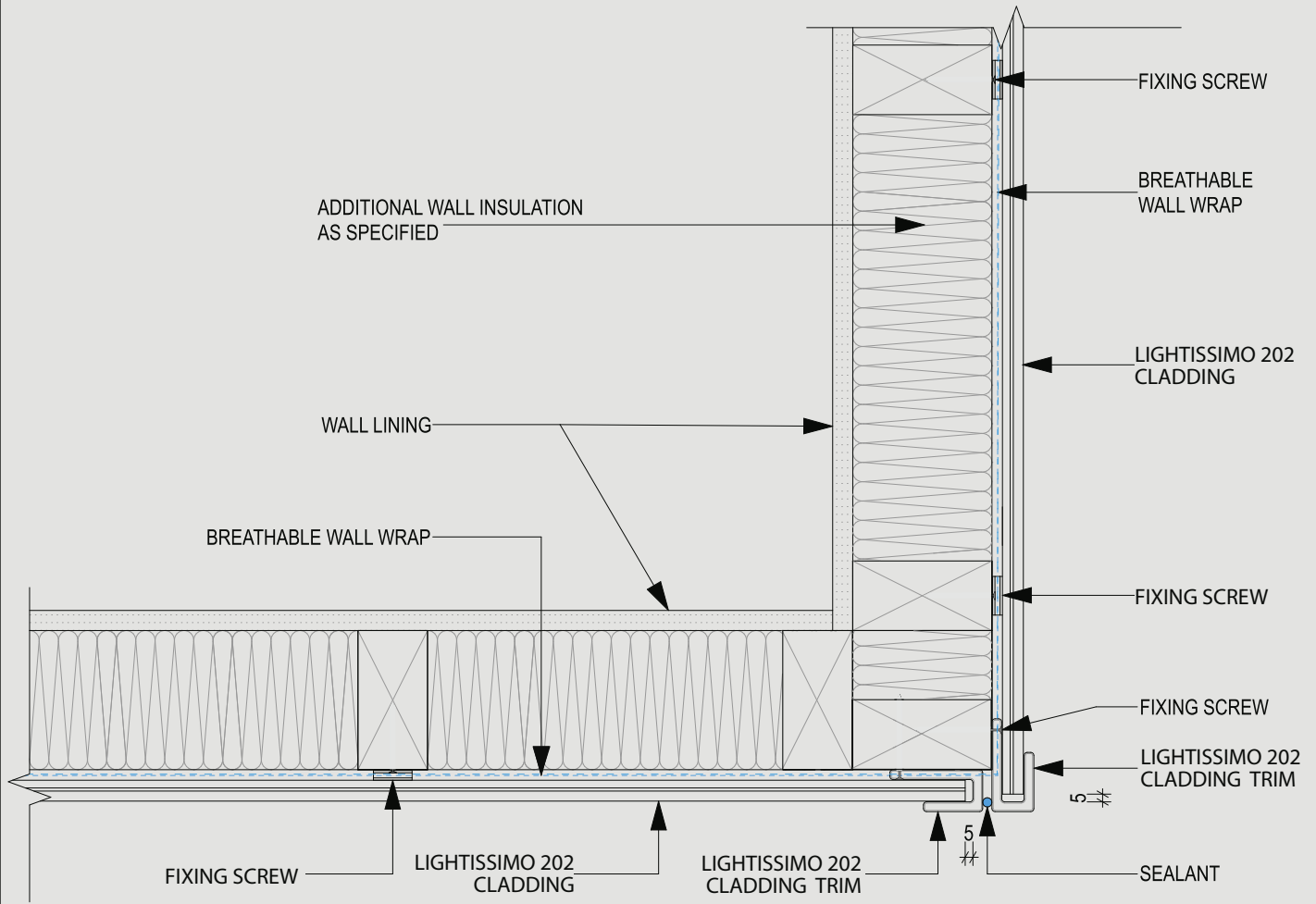




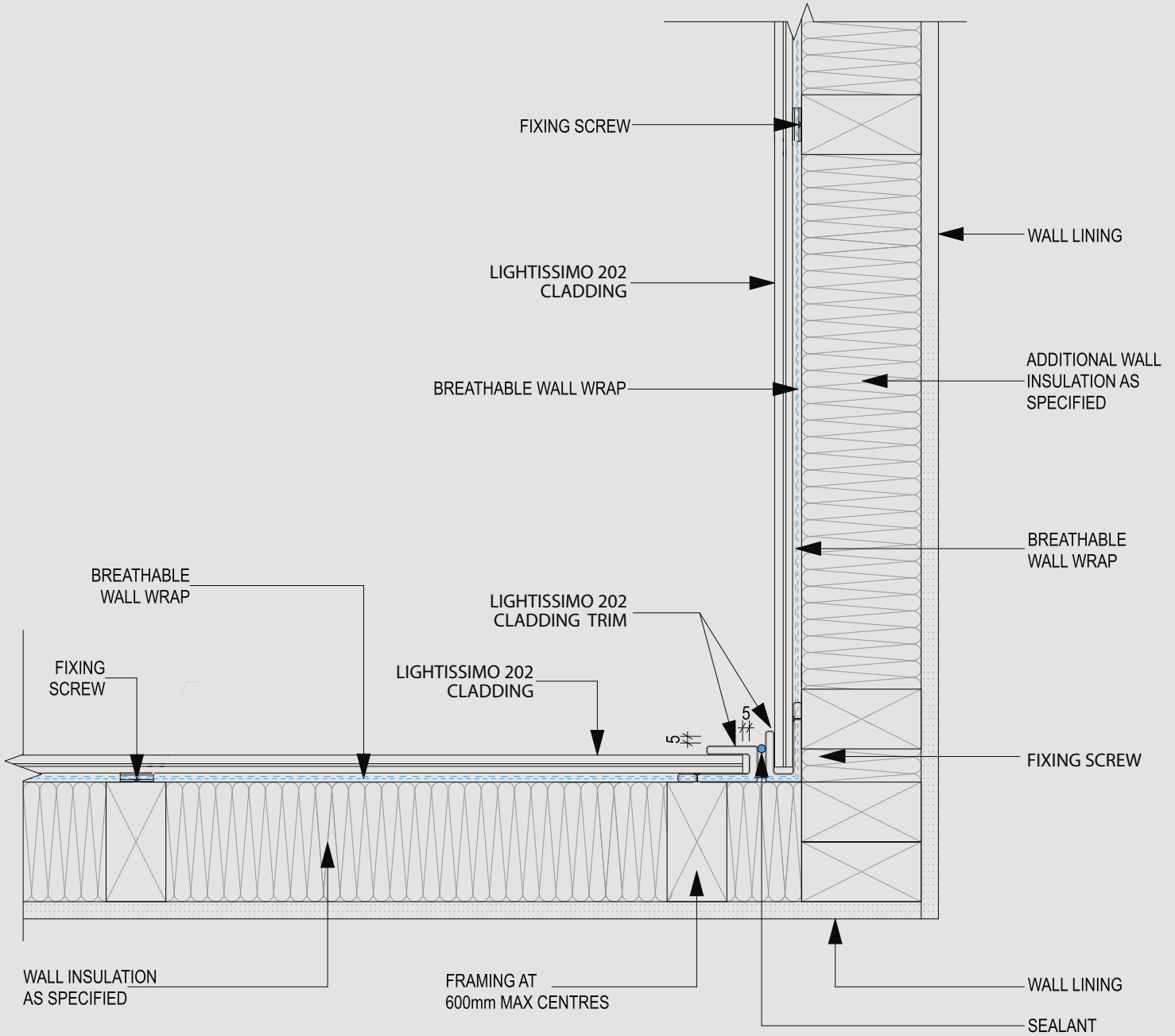


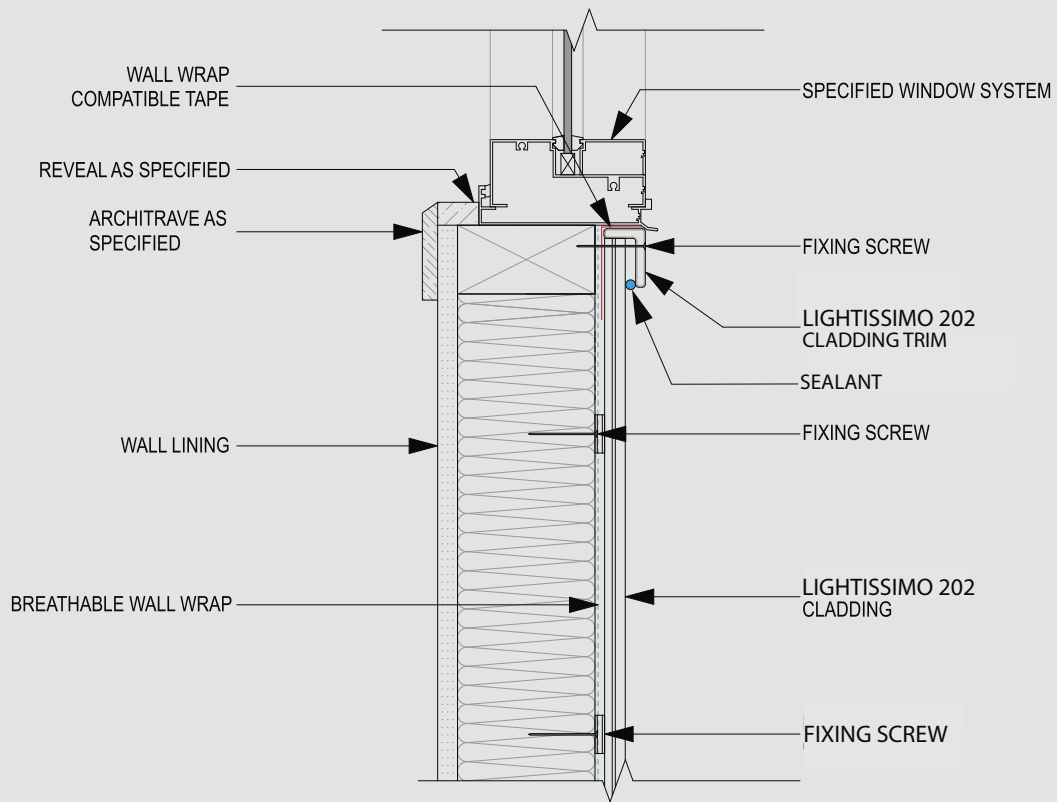


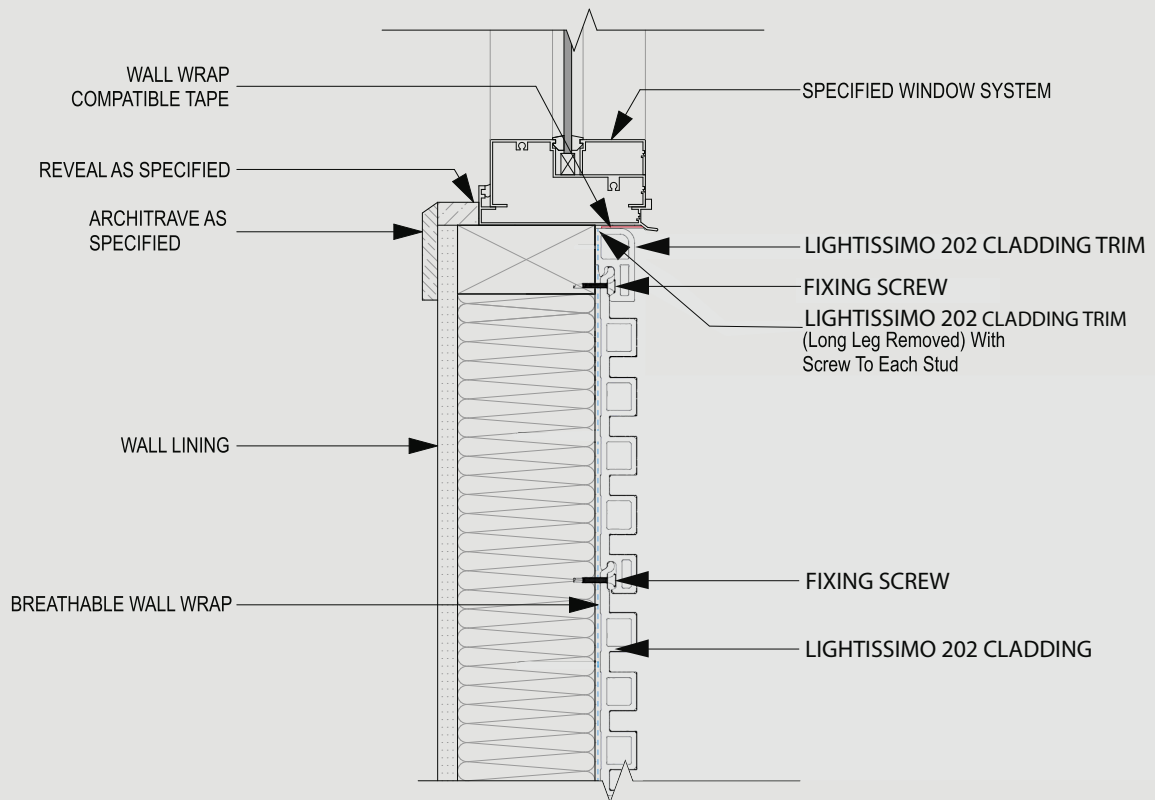


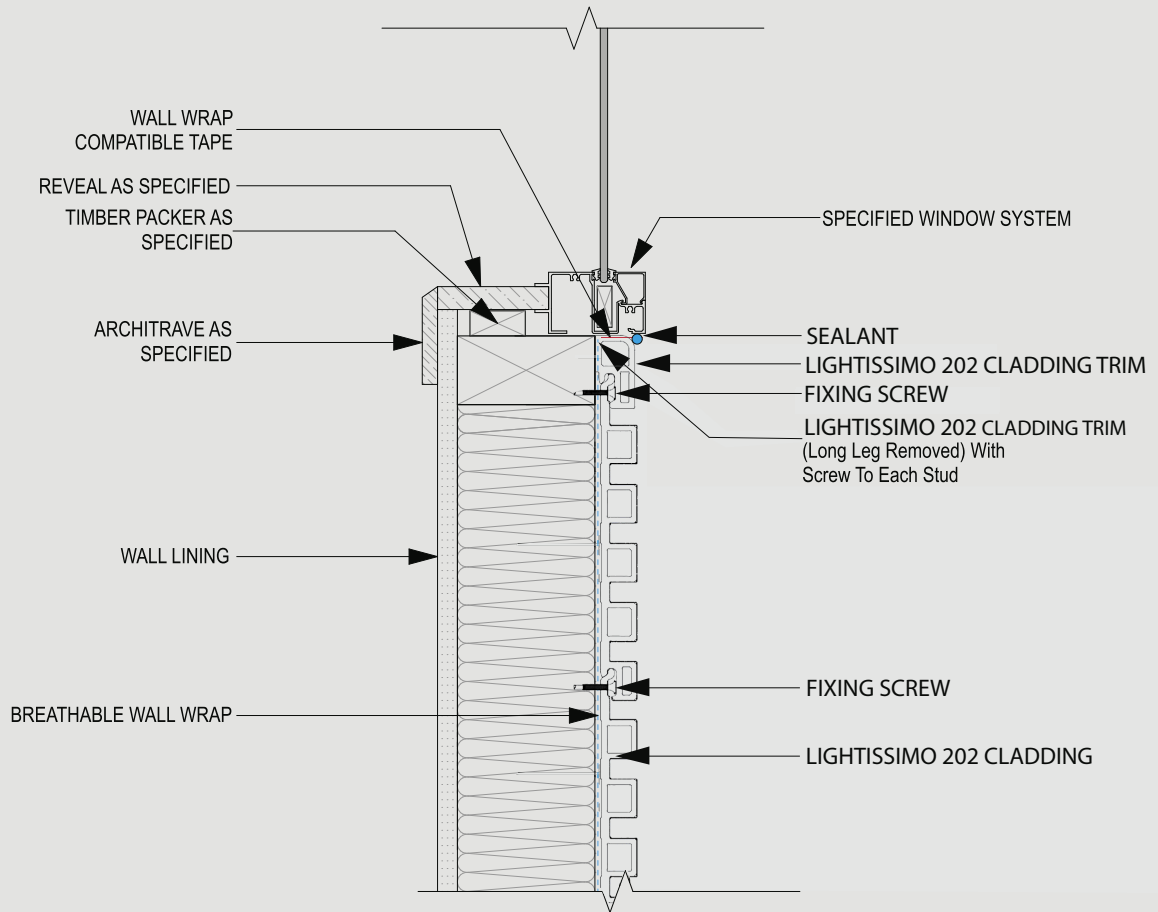


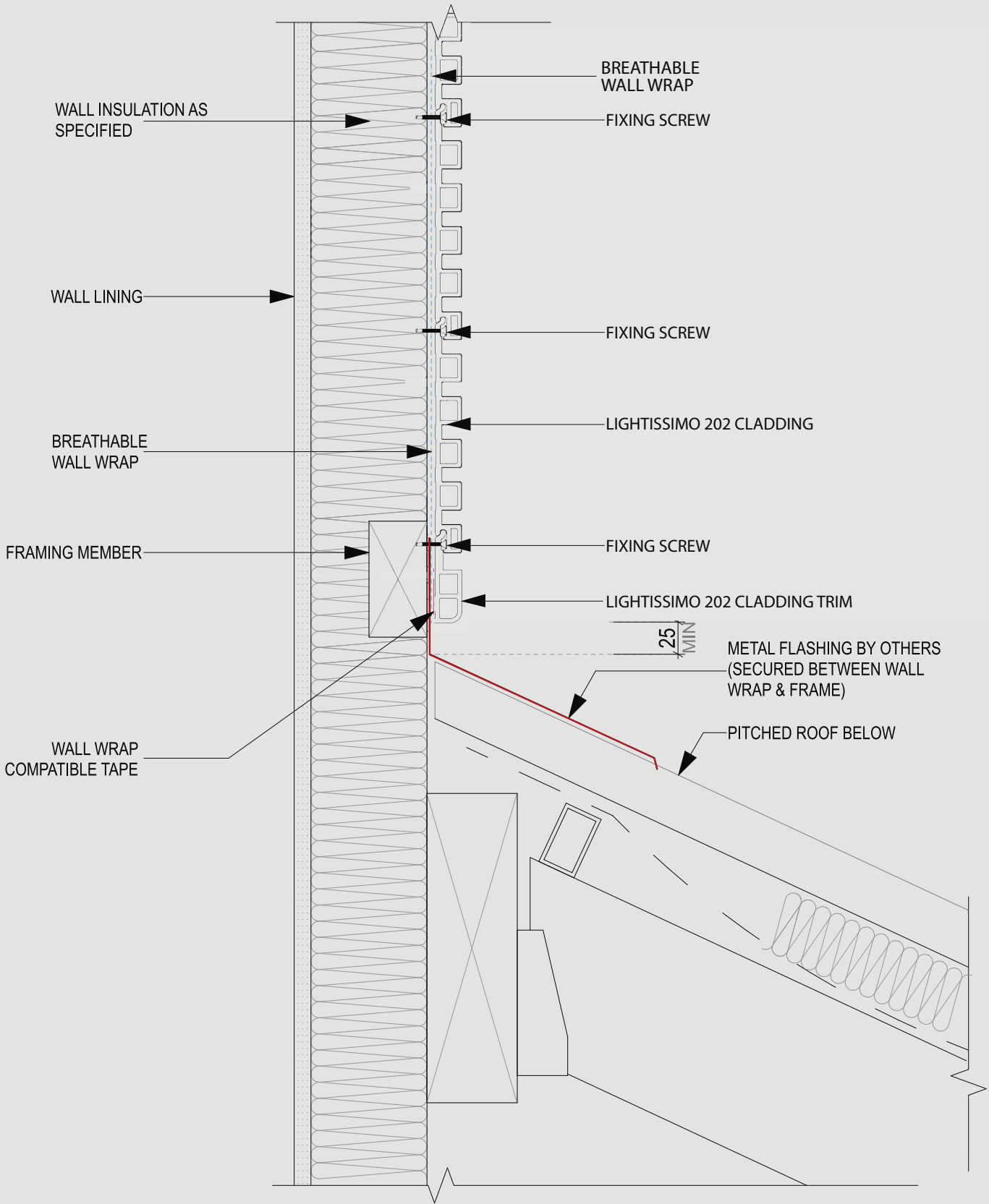
**NOTE:**  
 LEAVE 5mm GAP BETWEEN CLADDING AND TRIM

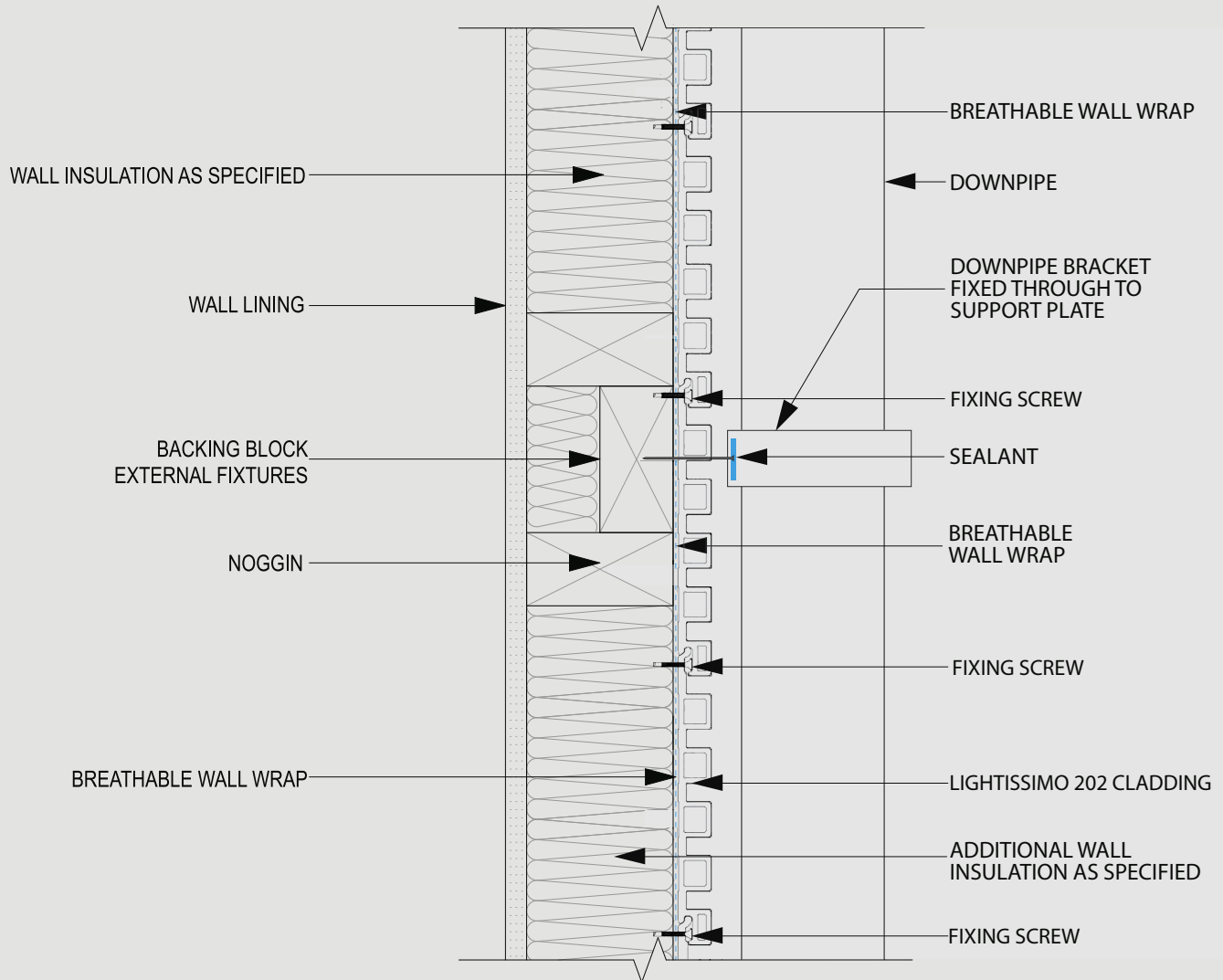


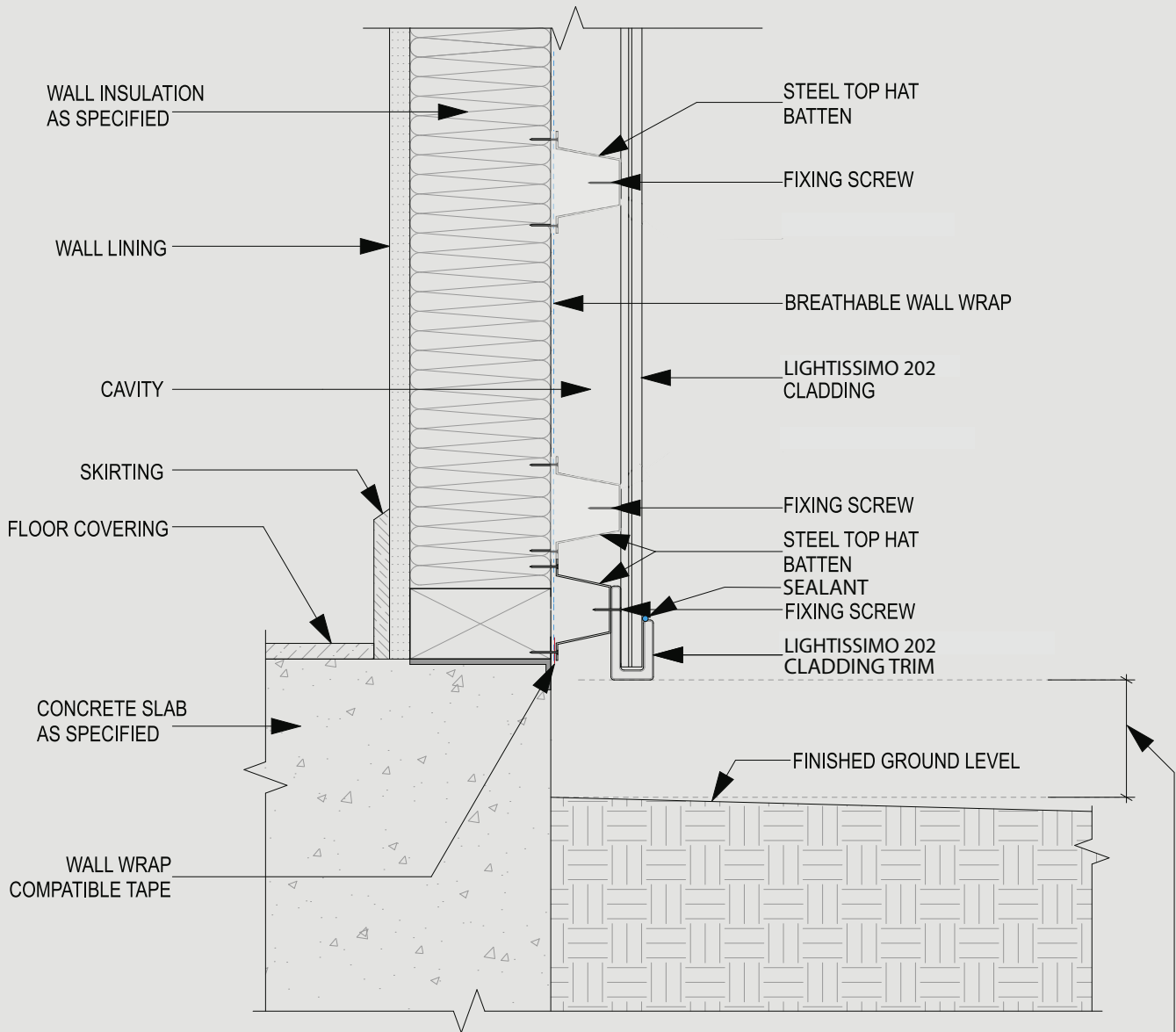




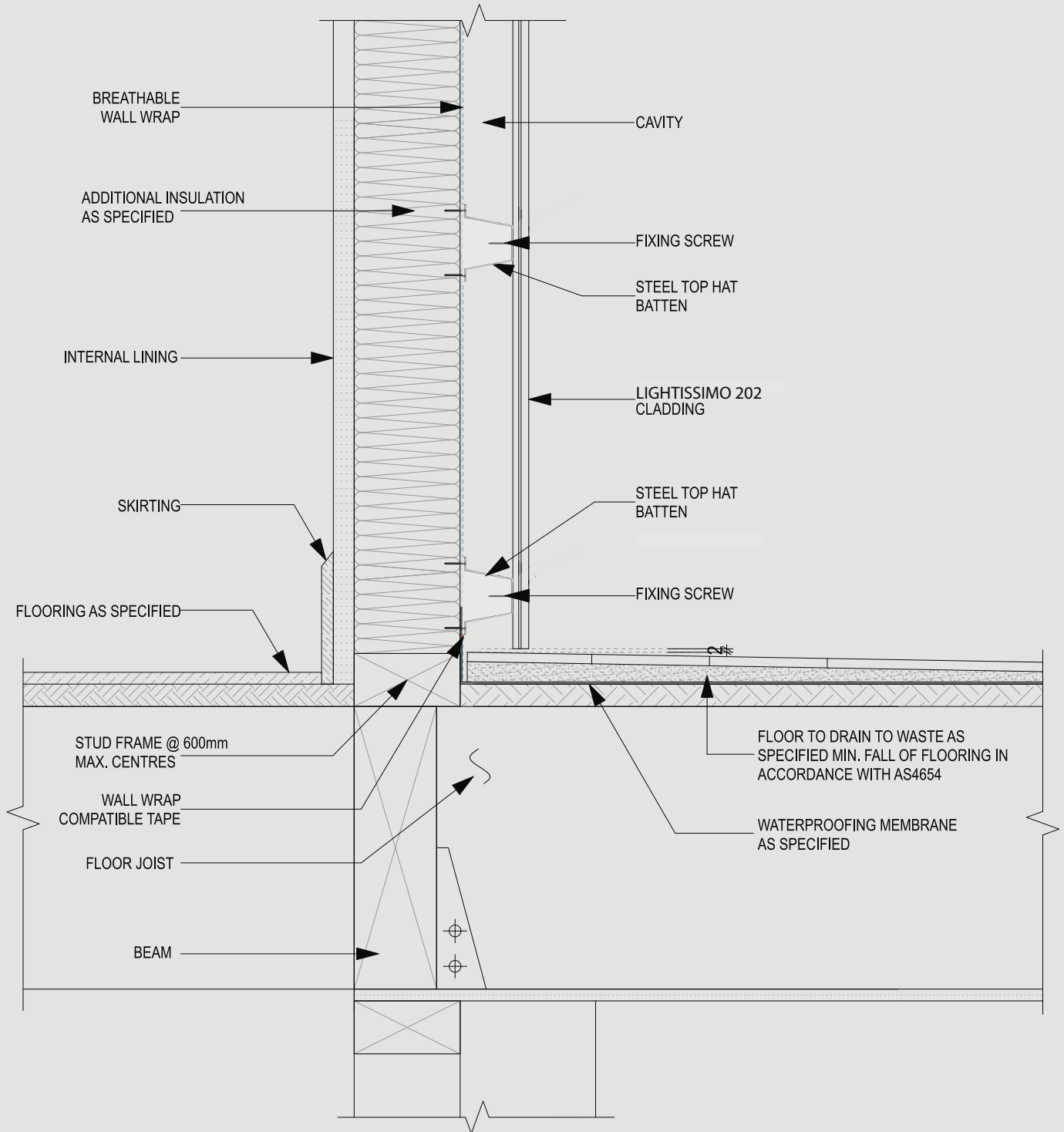


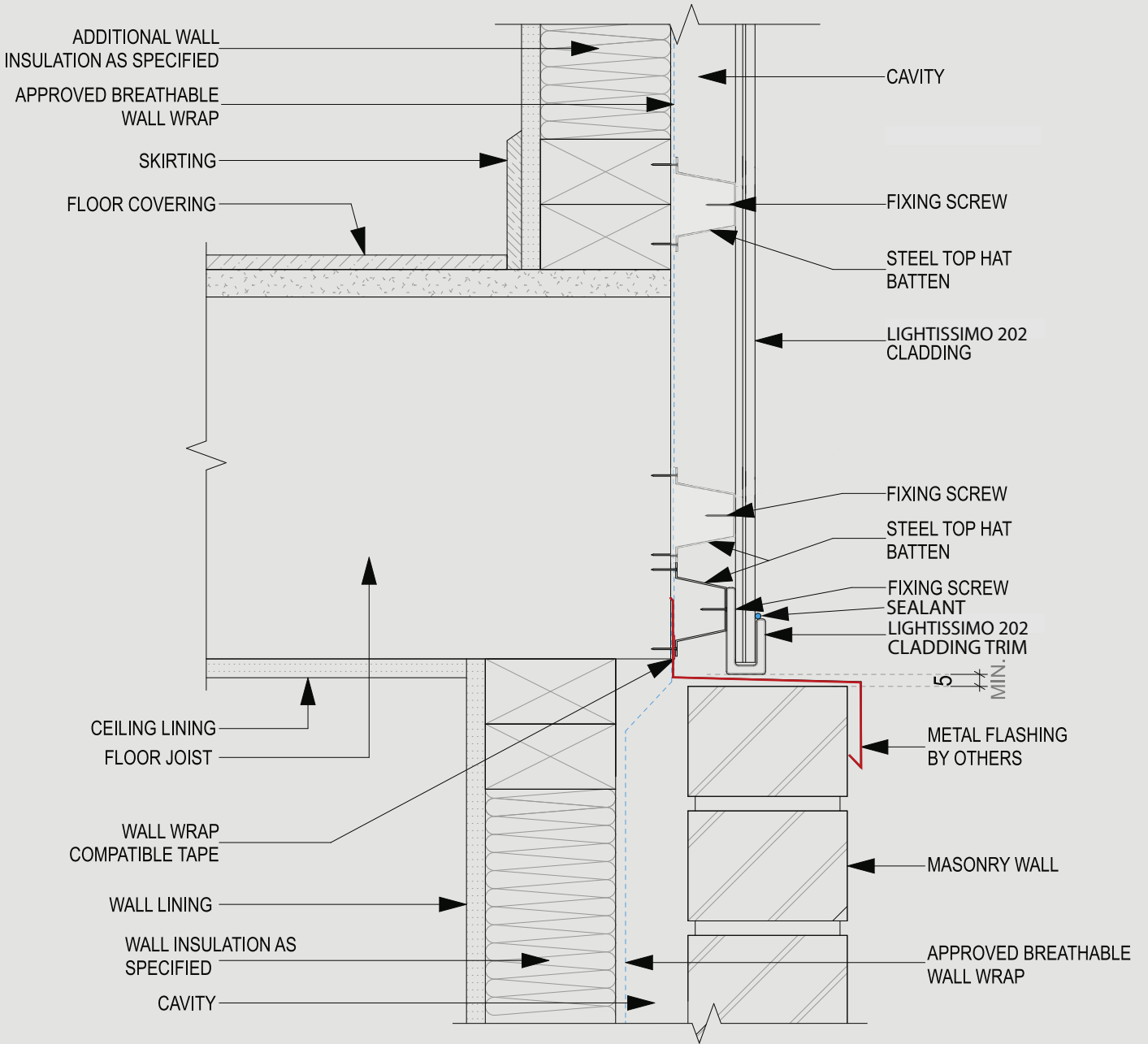


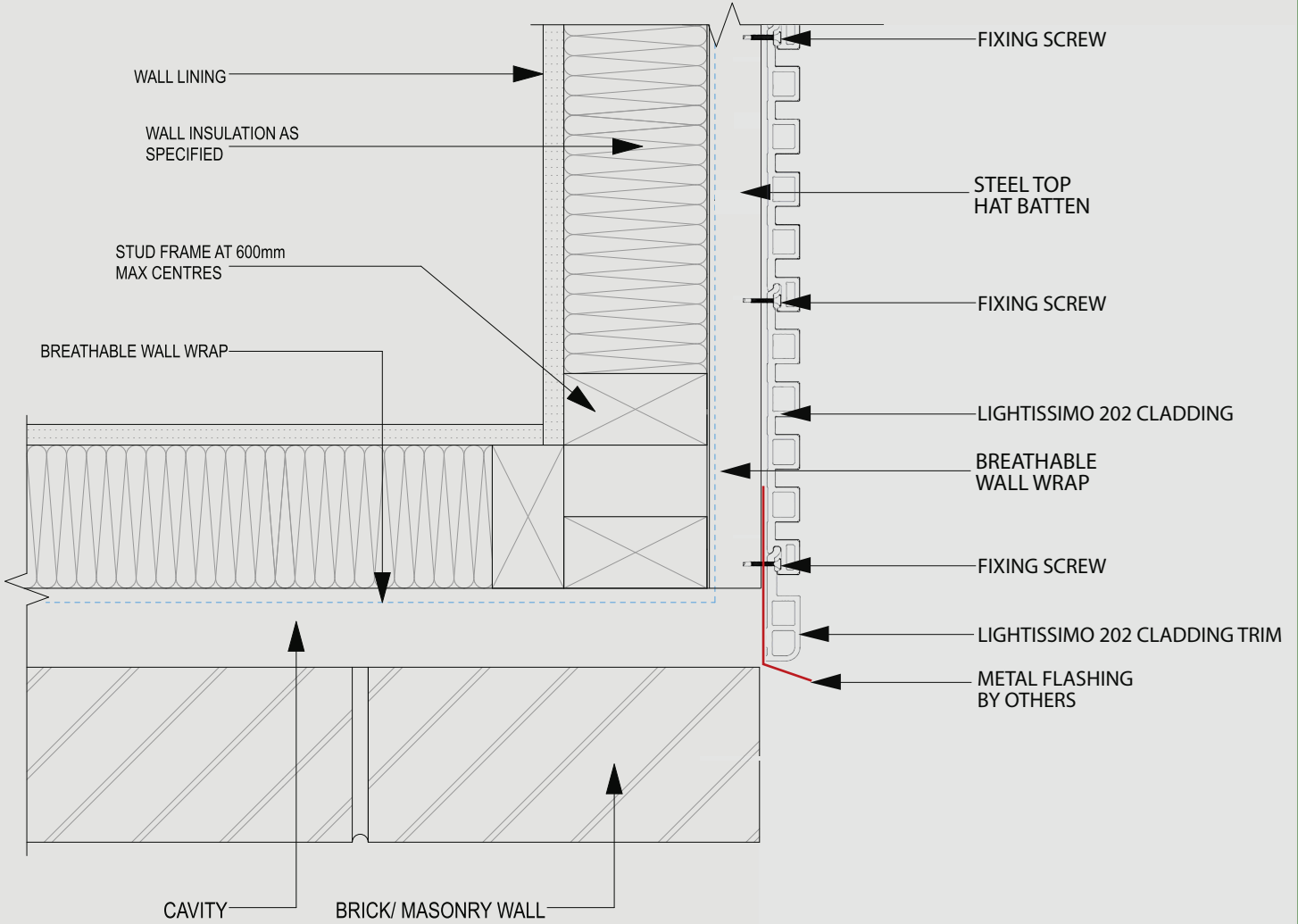


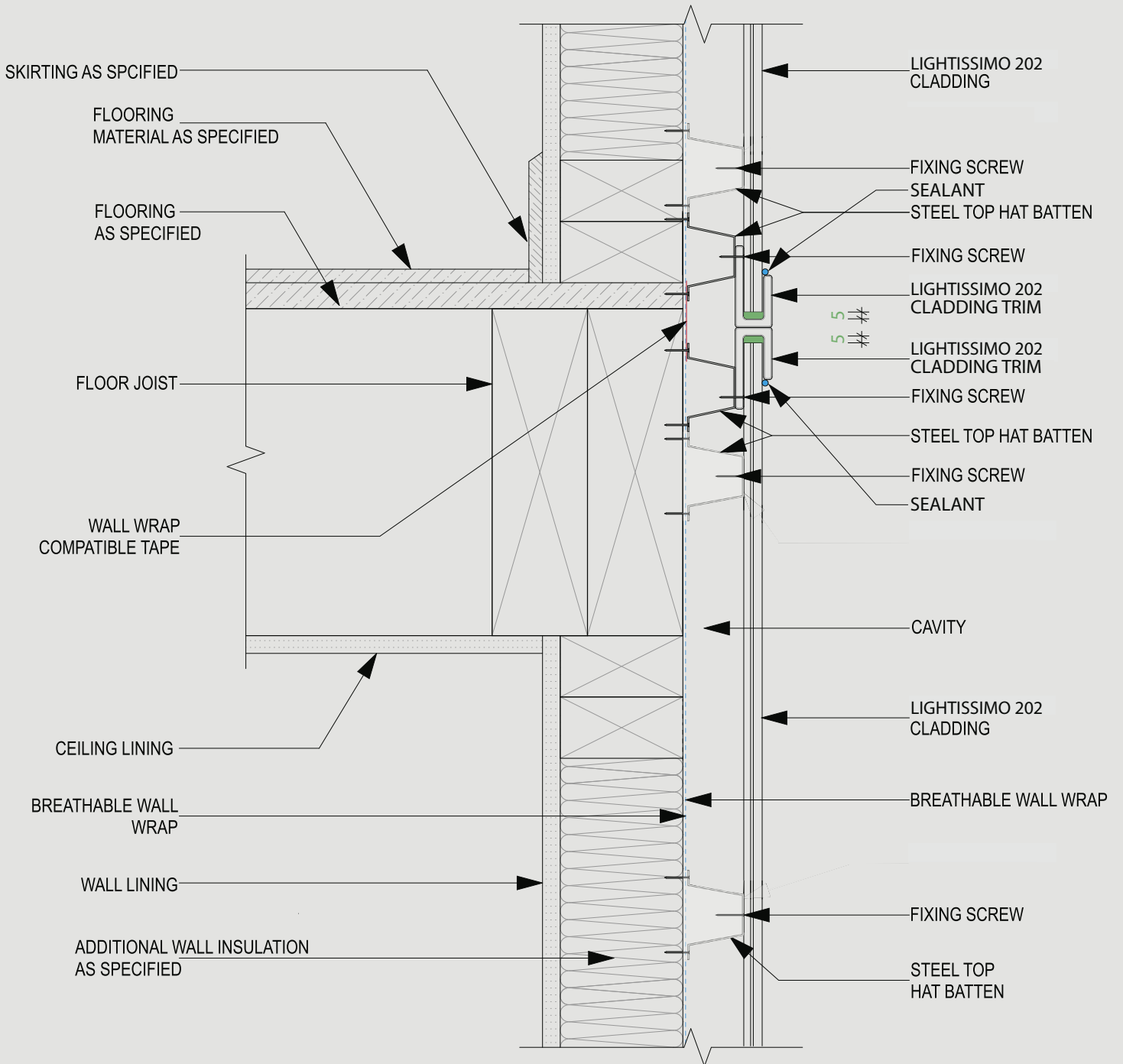


CLEARANCE AS PER THE BCA REQUIREMENTS FOR THE INTENDED APPLICATION  
 e.g. as per the specifications in Part 7.5.7 of the ABCB Housing Provisions

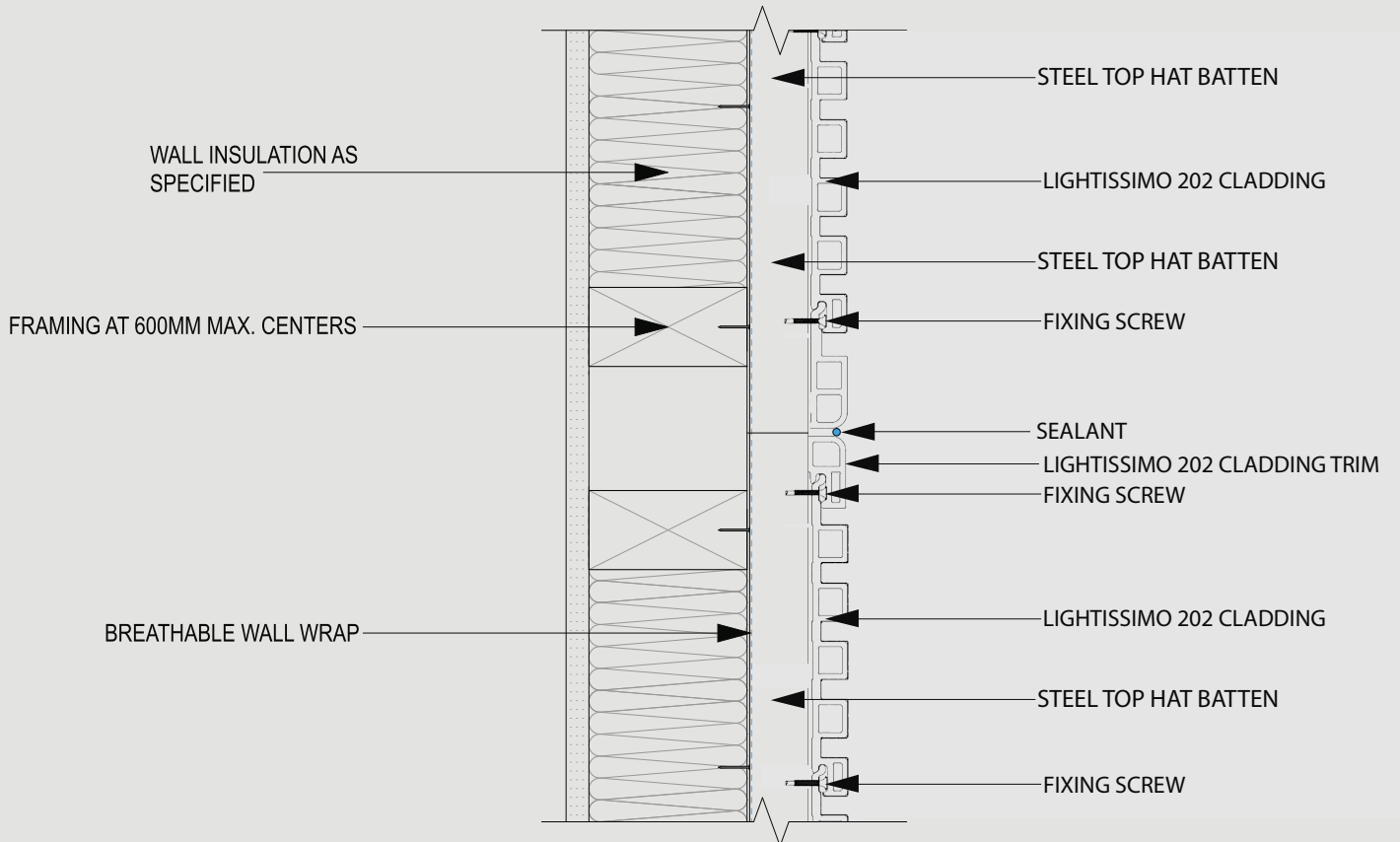




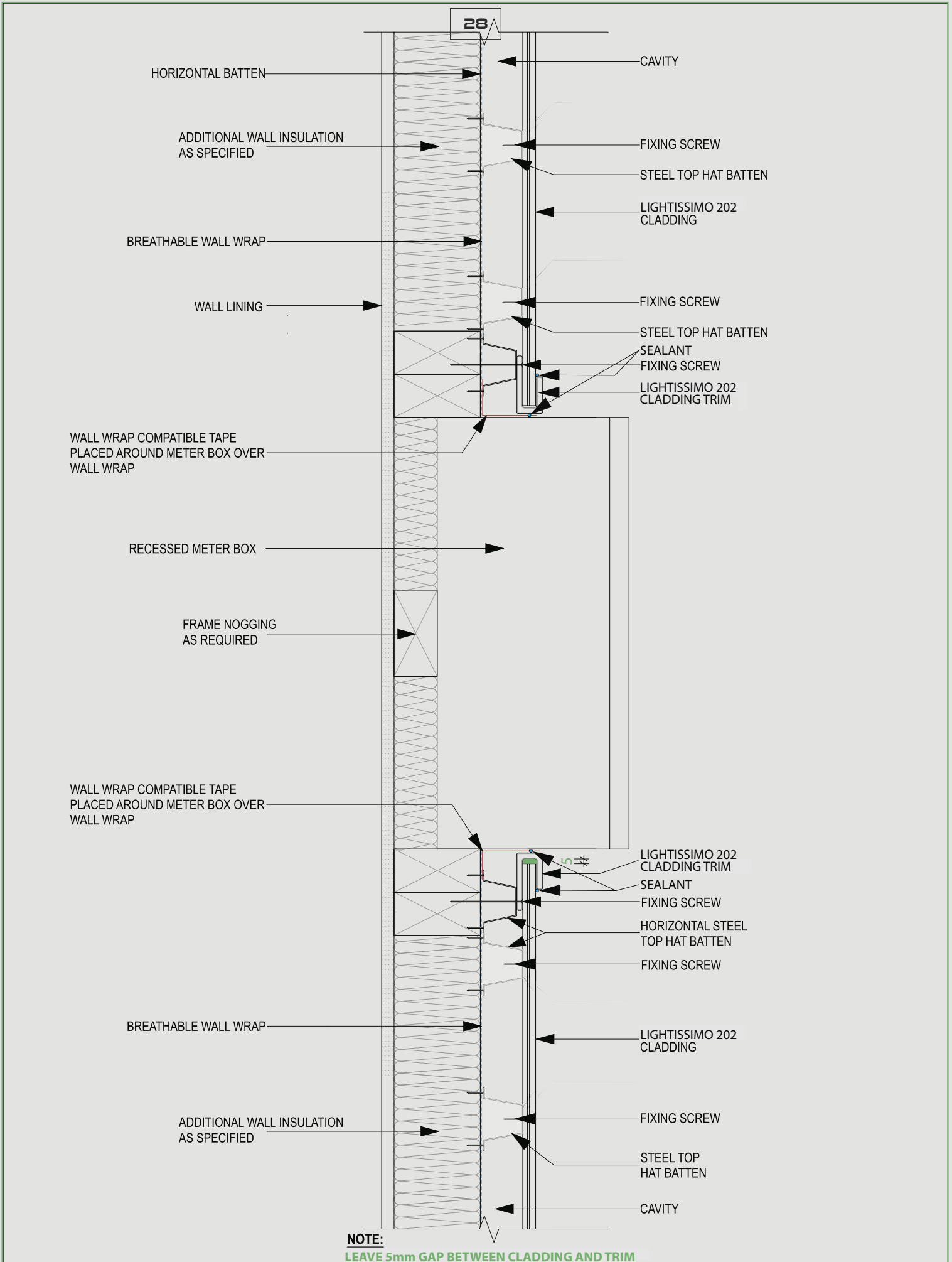


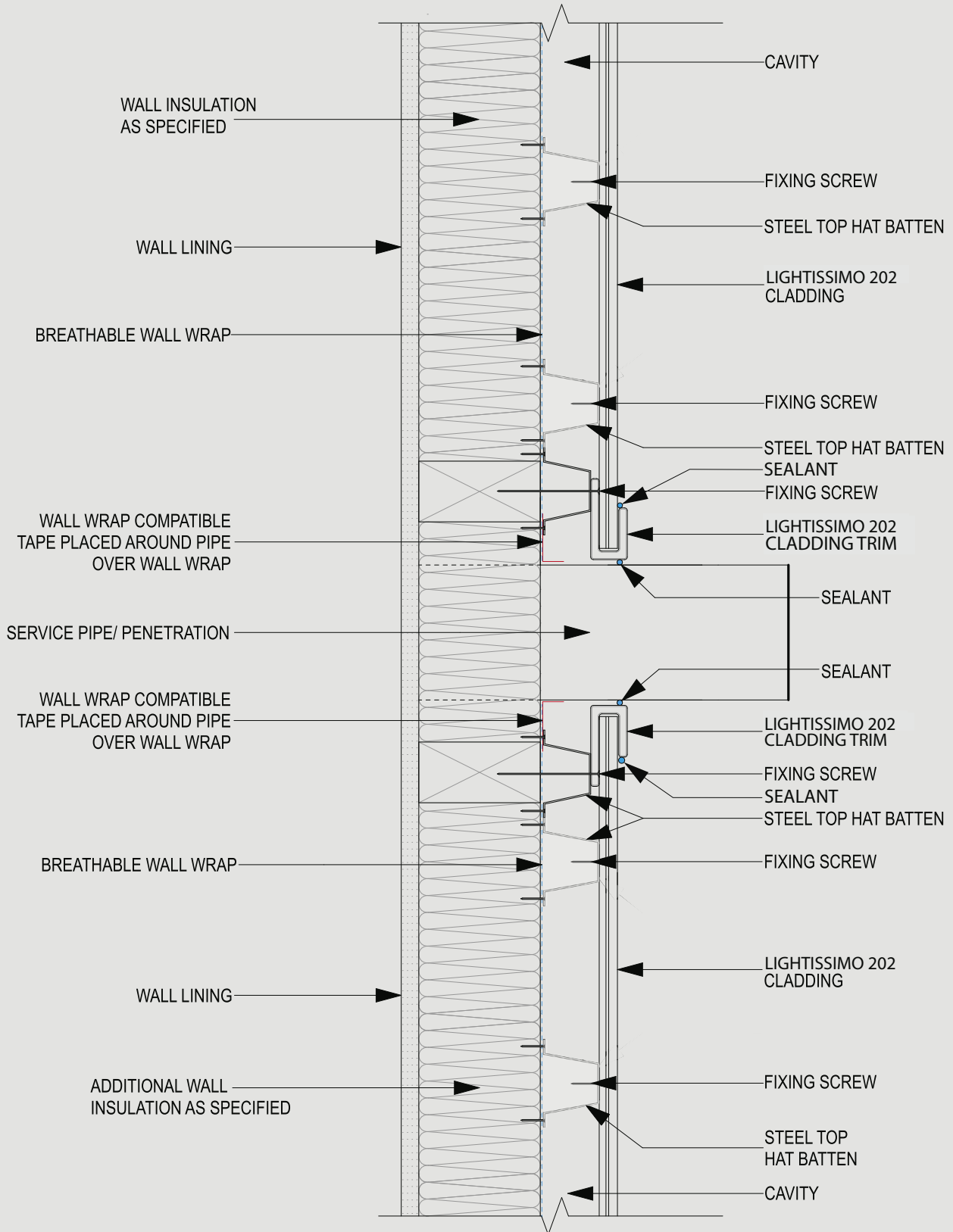


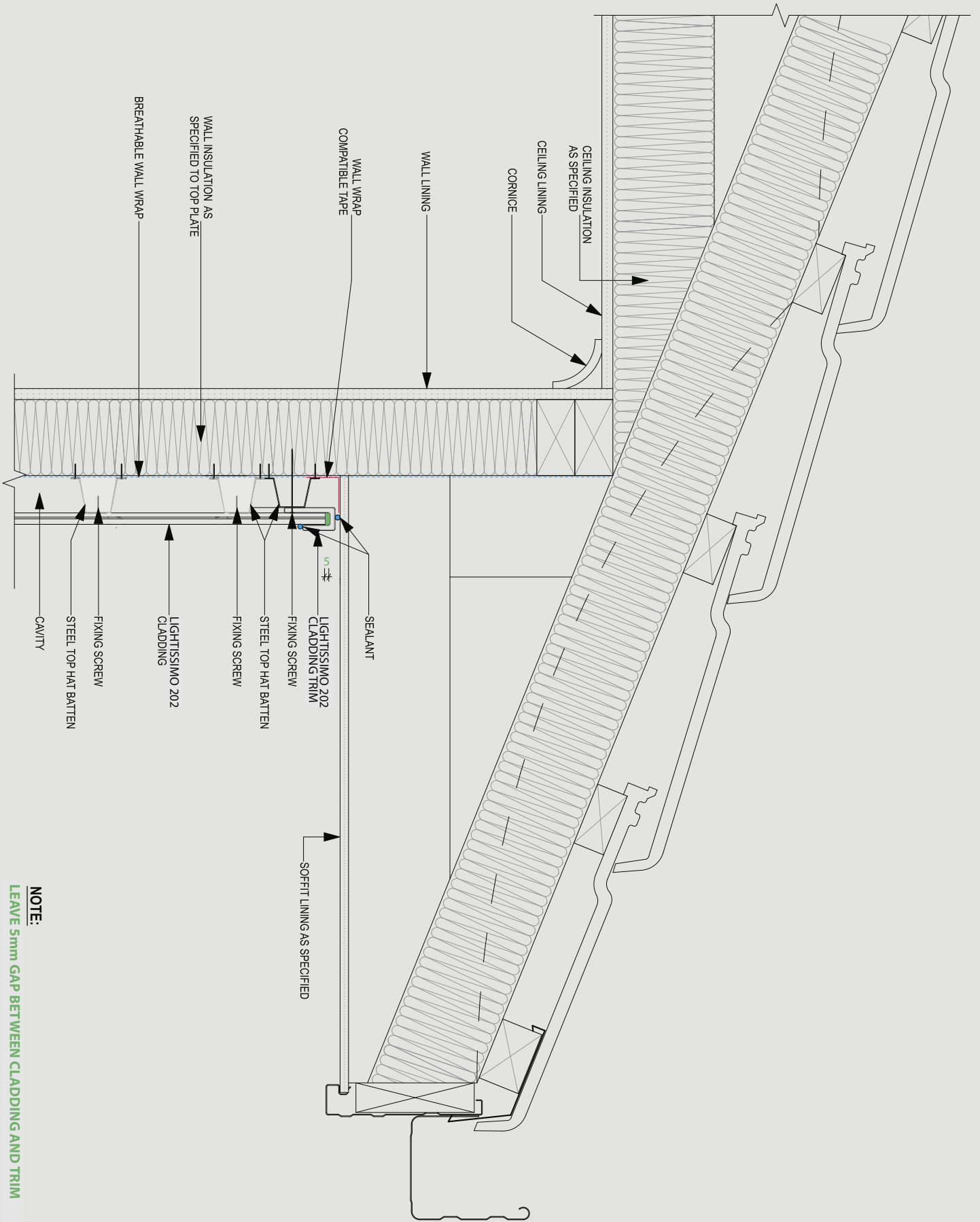
**NOTE:**  
 LEAVE 5mm GAP BETWEEN CLADDING AND TRIM



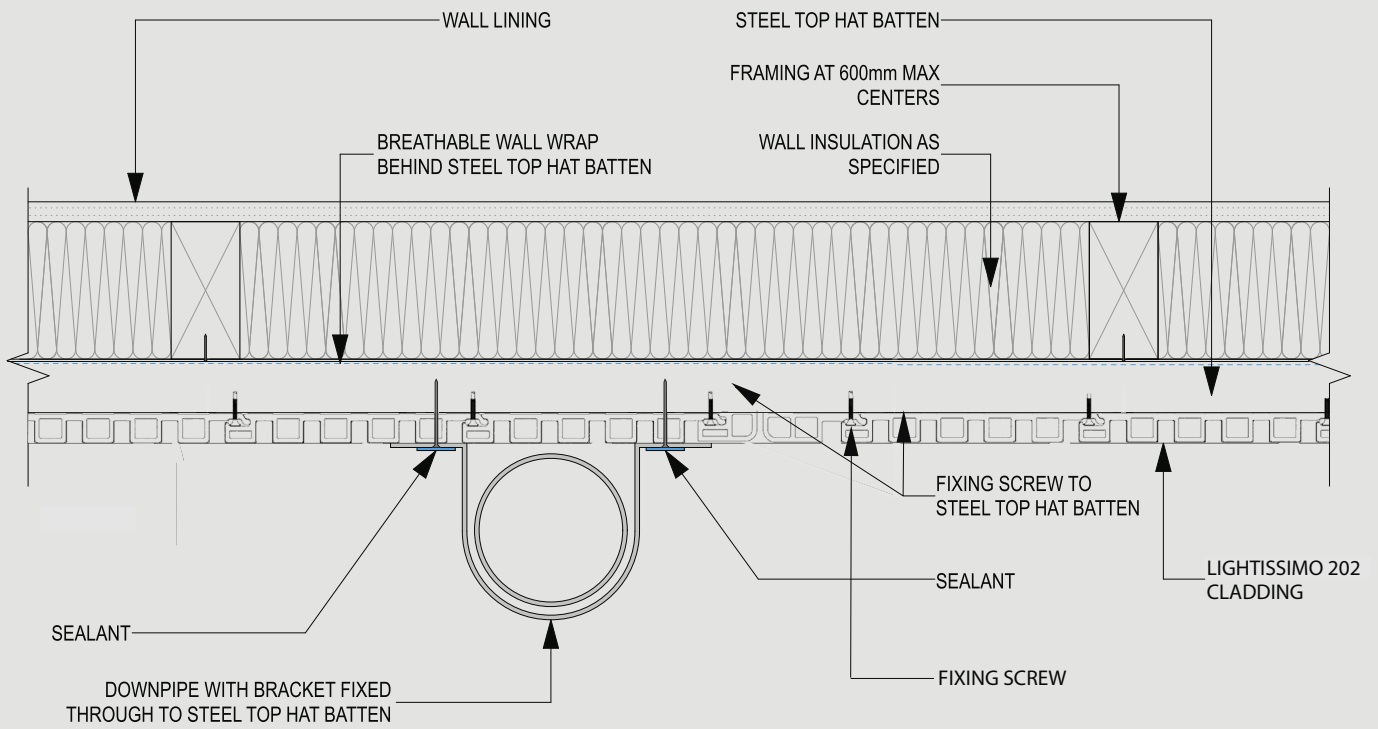
**NOTE:**  
LEAVE 5mm GAP BETWEEN LIGHTESSIMO 202 AND TRIM

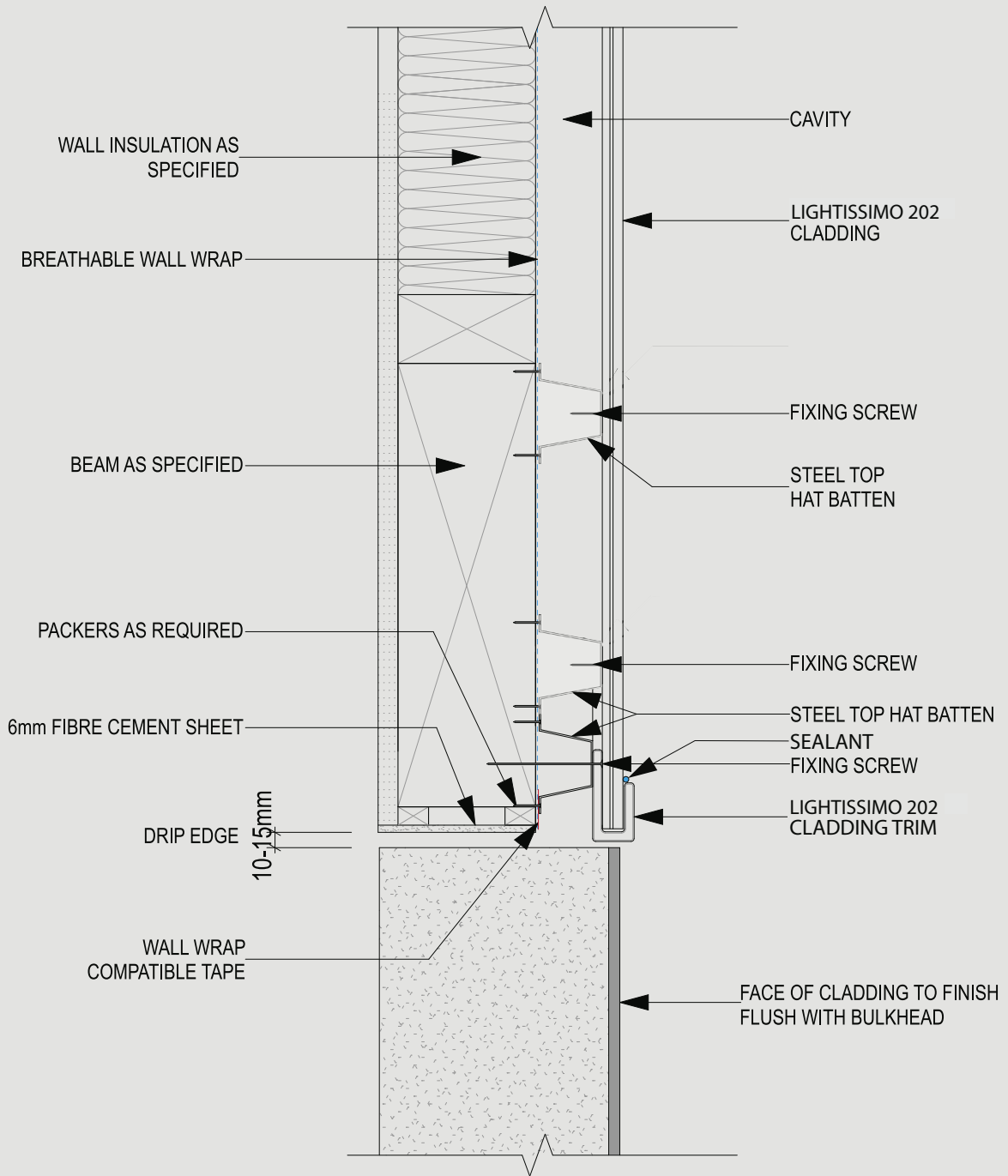


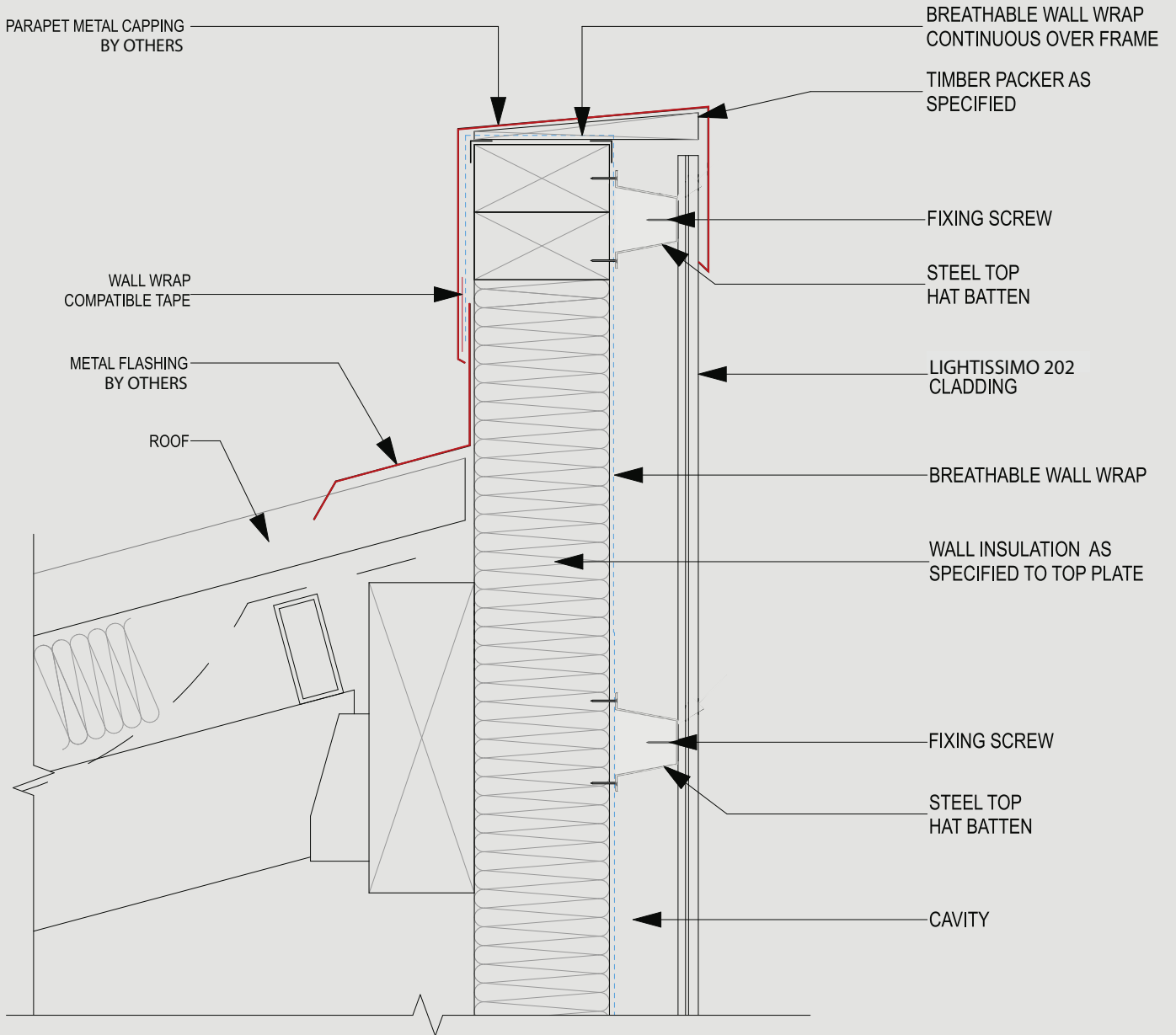


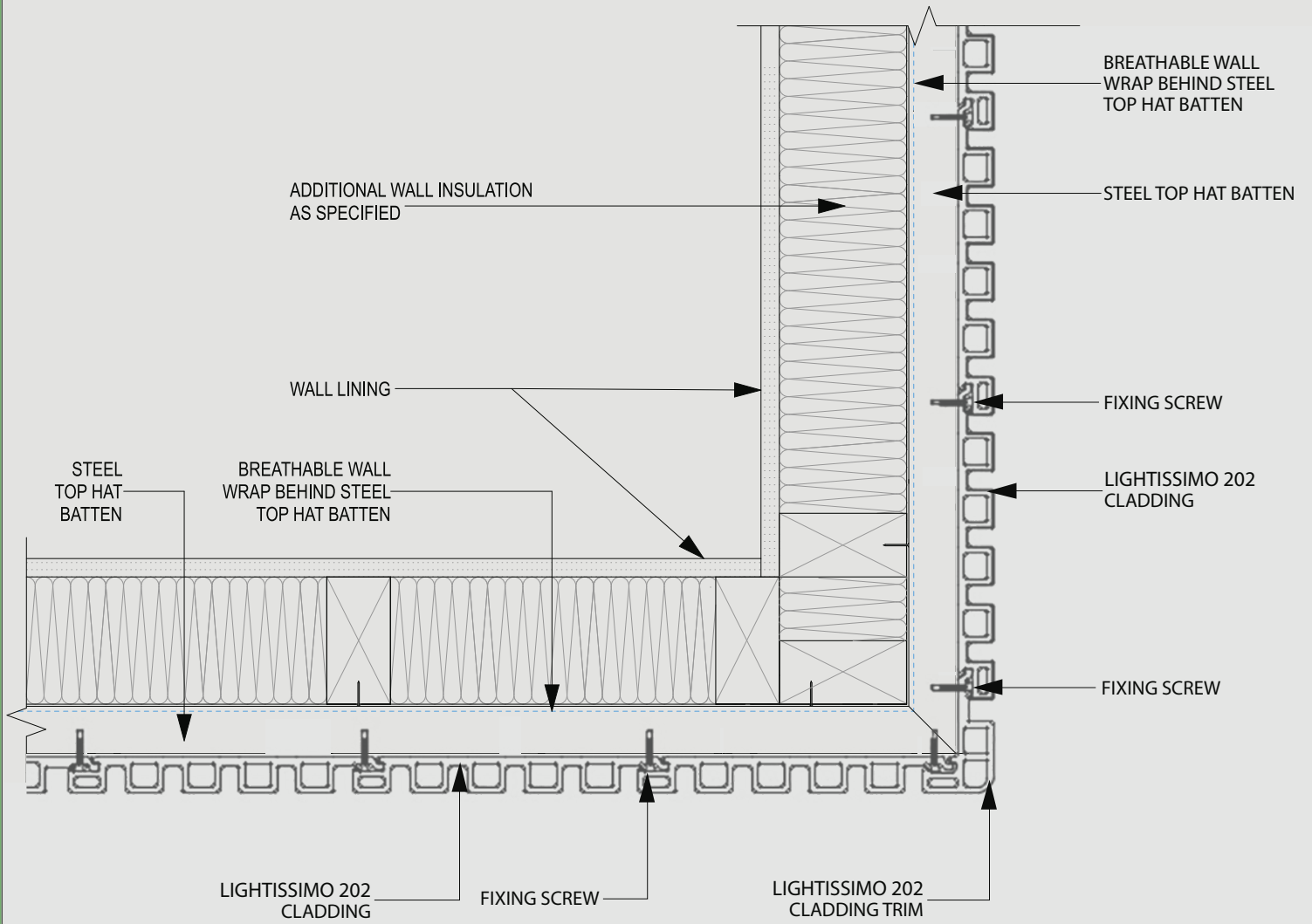


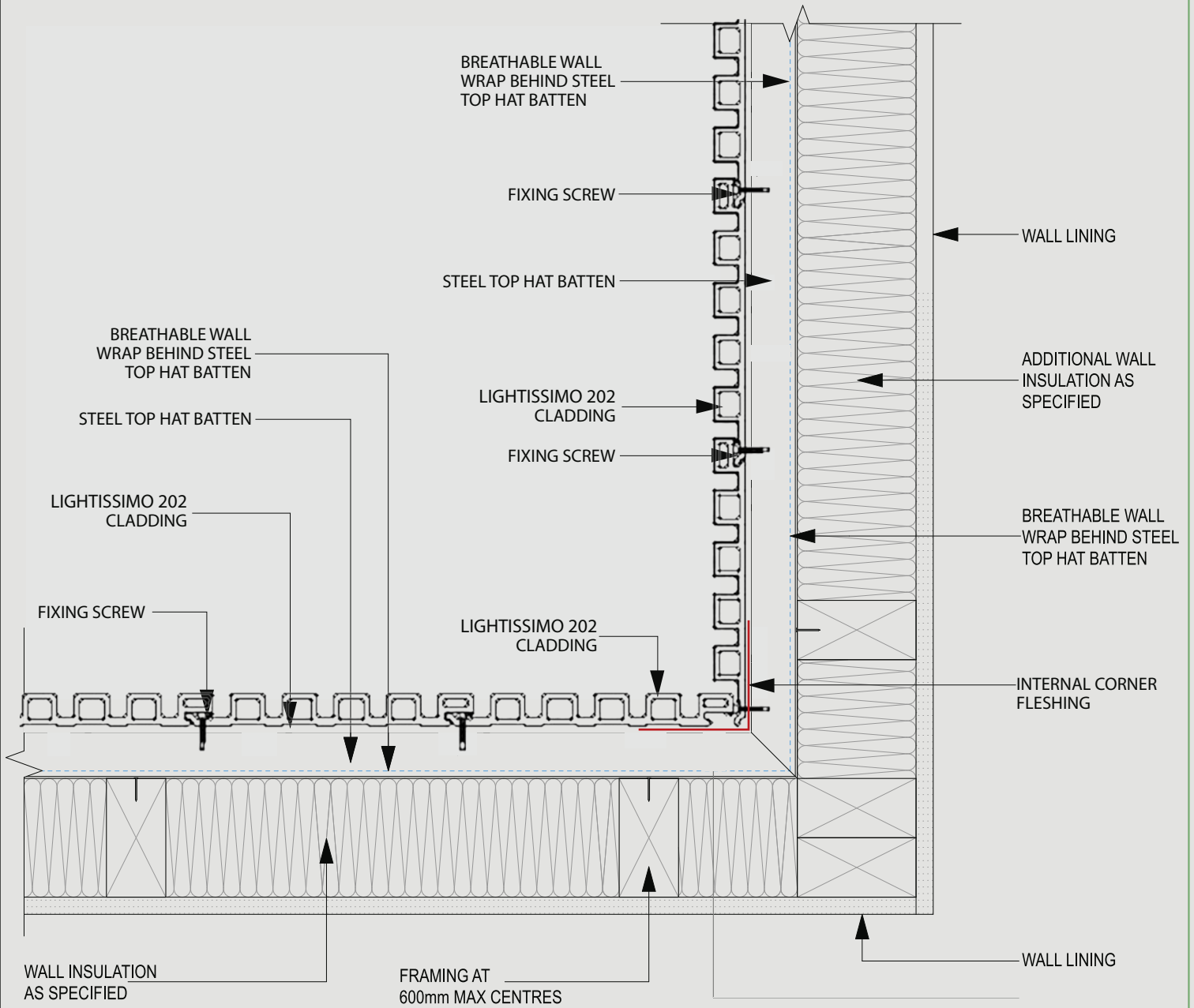
**NOTE:**  
LEAVE 5mm GAP BETWEEN CLADDING AND TRIM

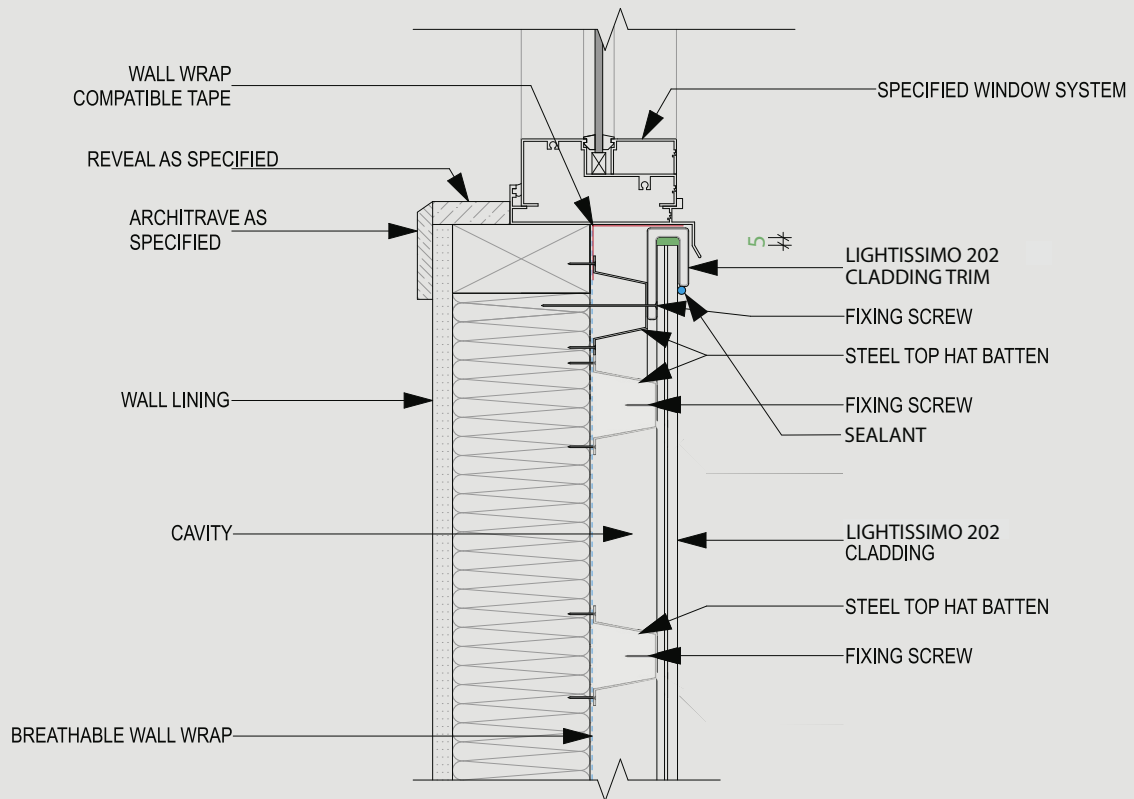
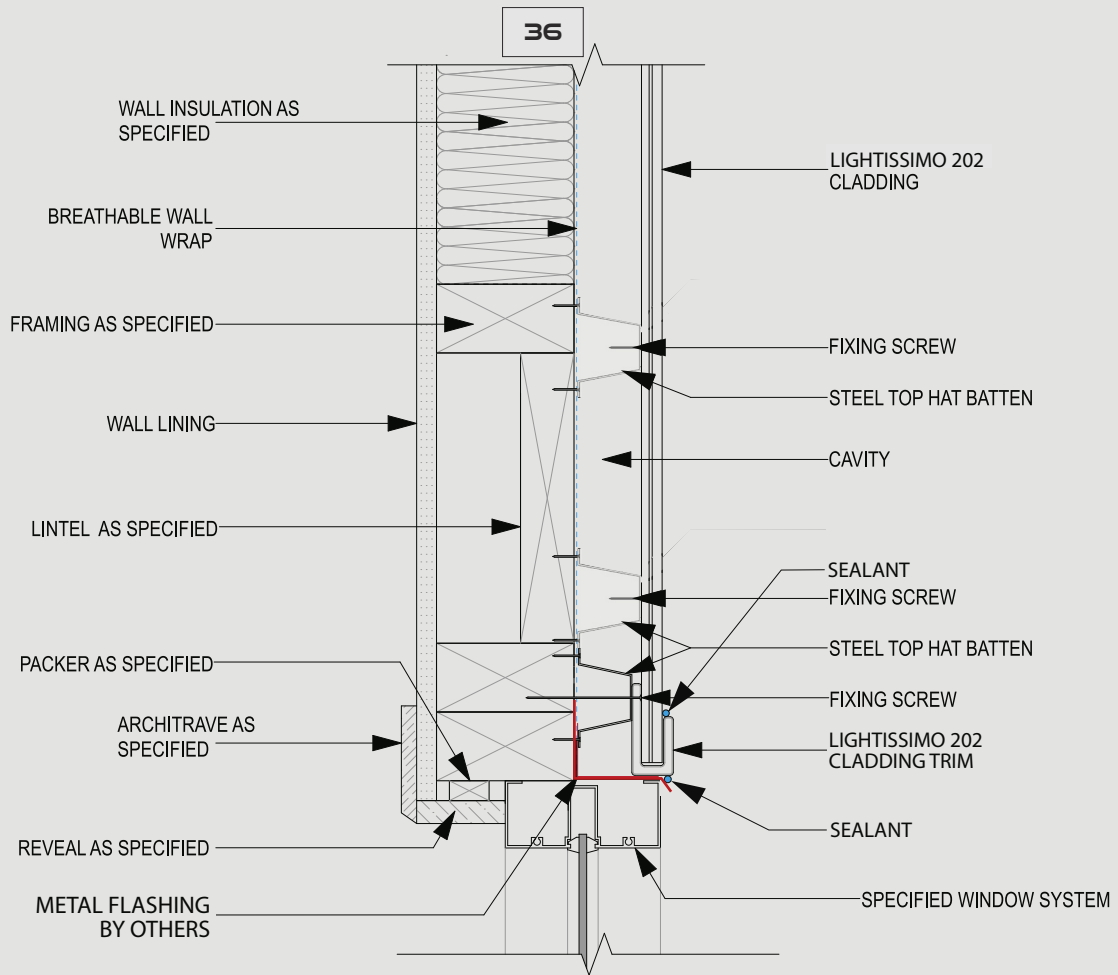












**NOTE:**  
LEAVE 5mm GAP BETWEEN CLADDING AND TRIM

